

ORE -----  
 MIN. -----  
 BARREN

FAV.  
 ----- UNFAV.

U.S.A.E.C.

HOLE NO. NC 434

PROJECT Luke #3

LOCALITY Knife Edge Mesa CLAIM

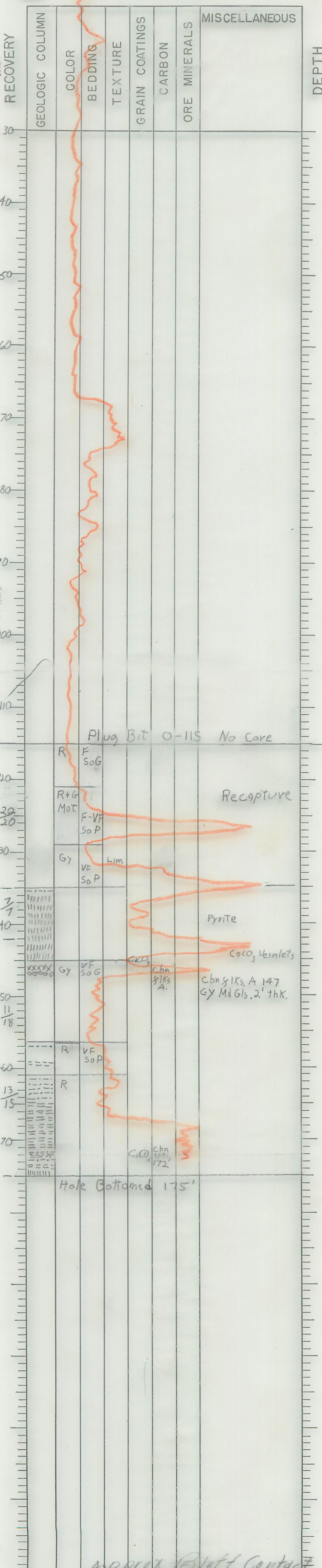
COLLAR ELEV. 7785 DEPTH 175

COORDINATES N. 96,738 E. 200,162

DATE COMPLETED 6-10-52

LOGGED BY WLC DATE 6-12-52

51/60 RECOVERY 85 %



Approx Bluff Contact

434