

ORE
 MIN.
 BARREN

FAV.
 UNFAV.

U.S.A.E.C.

HOLE NO. Ne 1424

PROJECT Luxe #5

LOCALITY Mesa #2 1/2 CLAIM _____

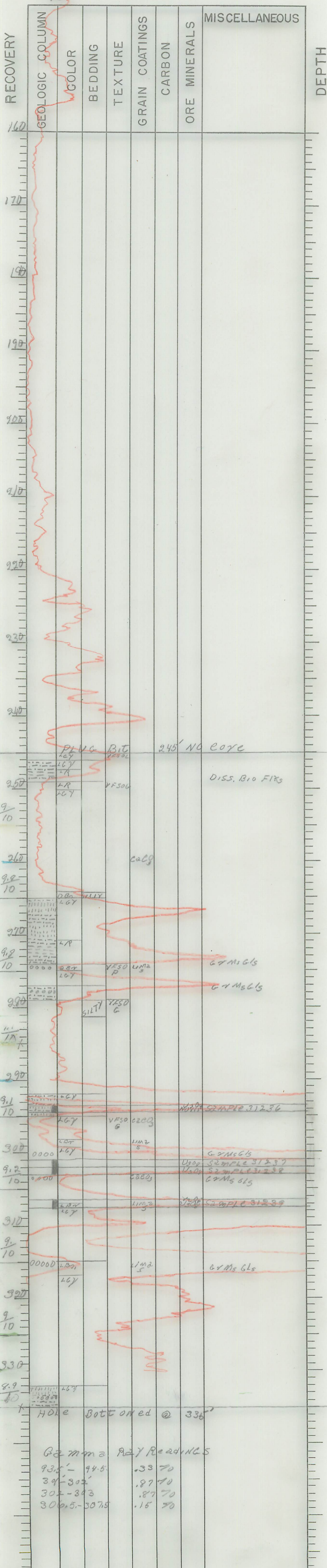
COLLAR ELEV. 7846.42 DEPTH 336'

COORDINATES N103 640 E200 396

DATE COMPLETED 1-22-54

LOGGED BY W Me DATE 1-24-54

$\frac{82.9}{90}$ RECOVERY 92.1 %



Gamma Ray Readings
 93.5' - 94.5' .33 70
 307 - 302' .87 70
 302 - 303 .87 70
 306.5 - 307.5 .15 70

Approx. Jb - 7485 - 361'