

799-700

USAEC

min

Hole No. 24799

Collar Elev 7428'

Total Depth 145'

Date:

Beg _____ Fin. _____

Location:

Claim Mesa 5

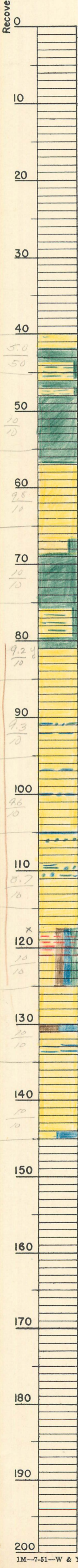
Dist. LUKACHUKAI DISTRICT, ARIZONA

Coord's N 107.552 E 92248

Logged by LR

Recovery 96.8 %

101.6
105.0



Overburden
no Core Recovered

40.0
42.0
45.0
48.0
50.0
52.0
54.0
56.5

Ss, F, 2 yw, Bdg G.
Ss, M-F, Mby; Bdg N, CaCO₃(A); Ms, 2by-Mby, Sms, Spts, Interstitial
Ss, M-F, mby, Bdg N, CaCO₃(A); Ms, 2by-Mby, Sms, Interstitial

50.0
52.0
54.0
56.5
58.0
60.0
62.0
64.0
66.5
68.5

Ms, Dby-BK, Bdg S, Fbk
Ss, M, 2 yw, Bdg N

66.5
68.5
70.0
72.0
74.0
75.5

Ms, Dby-BK, Bdg N, Fbk
Ss, M-F, 2by, Bdg N; CaCO₃(A); Ms, 2by, Sms, Spts, Interstitial

75.5
78.0
80.0
82.0
84.0
86.0
88.0
90.0
92.0
94.0
96.0
98.0
100.0
102.0
104.0
106.0
108.0
110.0
112.0
114.0
116.0
117.5
118.5
119.5
120.3
120.7
120.9
122.0
124.0
125.0

Ms, 2by-2yd, SPT
Ms, 2by, Sms, Spts, Interstitial

Ms, 2bn-DR, Sms, Gls
Ms, DR, Sms
CaCO₃(A)
Ms, DR, Sms
Ss, M, wh-2or-2BR-2Tan, Bdg N, CaCO₃(S)

Ms, DR, Sms, Gls
Ms, DR, Spt
Ms, 2by, Gls

Ms, 2bn-DR-2by, Sms, Gls

117.5
120.0
122.0
124.0
125.0

I BD: Ss, F, wh-2Tan, CaCO₃(A); Ms-Sms, 2bn-DR-DBR, Fbk; Carnotite, FKs-Yanoxite str.

Ms-sts, DR, SPT
Ms, DR, Sms, Spts
Ss, M, wh-2Or-2Tan, Bdg N, CaCO₃(S)

144.0
145.0 I BD: Ss, M-F, wh-2Or-2Tan; Ms, DR

7428
118
7310

xy=37