

Hole No Lu 768 7431

Collar Elev 7442 ~~7432~~

Total Depth 145.0

Date:

Beg _____ Fin. _____

Location:

Claim

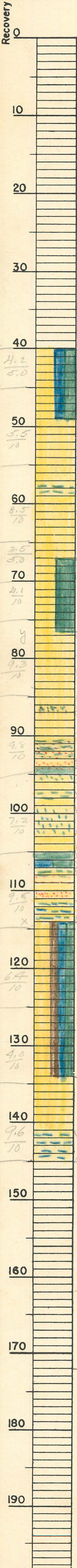
Dist. LUKACHUKAI DISTRICT, ARIZONA

Coord's N 107030 E 92596

Logged by LR

Recovery 77.7 %

81.6
105.0



Overburden
No Core Recovered

4.2
5.0

40.0
IBD: Ss, M, Wh-Lgn-DBn: Ms, Mby-Dby-DBR
Fble

5.5
10

49.0

8.5
10

Ms, Mby, Sms
Ss, M, L yw-Lby, Bdg 1/1

3.5
5.0

67.0

4.1
10

IBD: Ss, M-F, Mby: Ms, Lby-Dby, Fble

9.3
10

76.5
CaCO₃(A)

9.8
10

Lim stn
Ss, M-F, Wh-LTan-Bdg 1/1
Carnotite 93.4-94.2 + 92.0-92.2

9.2
10

Ms, ywbn, bls, Lgn FKS m Ss, Lim stn

7.2
10

Lim stn
Ms, ywbn-Mby, Sms, Spts, Lgn FKS, Lim stn

9.5
10

94.2
Ms, Mby-GnBr, CaCO₃(s), Carnotite FKS
94.0-94.7

X

Ms, Lby, bls
Ss, F, Gylgn: Ms, Gylgn

6.4
10

Ms, LR-Lgn, Gls
Ss, F, Wh-LTan, SPT
Ms, Mby, SPT
Ms, Lgn-LR, Sms, SPT
Ss, YF, Gylgn-Mbn: Ms, Mby, Sms

4.0
10

114.0
IBD: Ss, M-YF, Wh-Lgn-DR-DBn: Ms-sts,
Lby-Lgn-MR-DBR

9.6
10

134.0
Ss, M, Wh-LOR, Bdg 5

7432
114
151.0

Ms, DR-DBR, Sms, SPTS
145.0

7431
114
7317

xy = 34

170

Jb

180

190

200

9412
8