

Hole No. 11750

Collar Elev 7452

Total Depth 162'

Date:

Beg \_\_\_\_\_ Fin. \_\_\_\_\_

Location:

Claim Mesa I

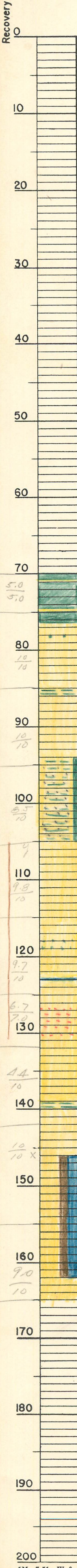
Dist. LUKACHUKAI DISTRICT, ARIZONA

Coord's N106863 E 93084

Logged by LR

Recovery 90.3 %

83.1  
92.0



Overburden  
No Core Recovered

70.0  
5.0 / 5.0  
76.5  
10 / 10  
94.0  
8.5 / 10  
105.0  
9.8 / 10  
120  
9.7 / 10  
130  
6.7 / 7.0  
130.3  
4.4 / 10  
140  
10 / 10 X  
146.0  
162.0  
70 / 92

Ss, F, Dgy-BK, Spt  
Ms, Mgy-Dgy; Bdg S.  
Ss, F, Dgy-BK, Spt  
Ms, Mgy, G1  
Ss, M, wh-16y; Bdg of  
Ms, Mgy, Sms  
CaCO<sub>3</sub>(A)  
Ss, M-F, 16y-M6y, Bdg N; Ms, Mgy-Dgy, Cln Fxs, Sms, Spts, Interstitial.  
CaCO<sub>3</sub>(A)  
Ms, 26n, G1s  
Ms, 2R-DBR, G1s  
Ss, M, wh-2Tan, Bdg N; Carnotite Fxs 126.8-130.3  
Ms, MBR-MR, Spt  
CaCO<sub>3</sub>(S)  
Ss, M-F, wh-LR, Bdg N  
Ms, 26n, Sms  
141.0 CaCO<sub>3</sub>(A)  
142.0 Ss, F, MBR, Bdg N, Cln Fxs  
Ss, M, wh-20r-2R, Bdg N, Lim Str  
IBD: Ss, F-YF, 26n-DBR-DR; Jts-Ms DBR-DR, CaCO<sub>3</sub>(S)

7452  
146  
7306

xy = 41