

Hole No. LU 1082

Collar Elev. 7607

Total Depth 145'

Date:

Beg. _____ Fin. _____

Location: LUKACHUKAI DISTRICT, ARIZONA

Claim Mesa IV 1/2

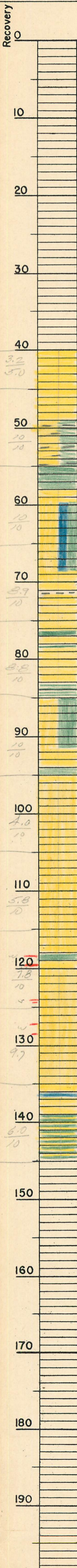
Dist. Luragaburrai #2

Coord's N102941 E 89514

Logged by LR

Recovery 80.2 %

84.2
105.0



Overburden
No Core Recovered

40.0
3.2
5.0
35, F; 2Tan-2yw; BdgP

49.0
10
10
mby
35, F; 2Tan-1yw; Bdg; Mo, Dby;
3mo; Spts; Con FXS

55.0
Mo, Dby; Bdg; Fbk

58.0
59.5
35, WH-2Tan-2yw; Bdg; CalCo(A);
Mo; Dby-DBR; 3mo; Spts

60
10
10
CaCO₃(A)
IBD; 35, F; DBR; Mo-sts; DBR; Fbk
CaCO₃(A)

68.5
69.5
CaCO₃(A)
Con FXS

80
8.8
10
Mo, Dby; Spt
Mo, Dby; Spt
35, M-F; WH-2yw; Bdg

85.0
Mo, Dby; SMO

90
10
10
IBD; 35, M-F; mby; Mo, Dby; Fbk

91.5
Mo, Mby; 3mo; Spt

100
4.0
10
35, M-F; WH-2yw; Bdg

110
5.8
10
114.0

120
7.8
10
Mo, Dby; Bdg; Spt

130
9.7
35, M-F; 2by-Mby; Bdg
Bdg; Uranium
Vanadium: 118.5-119.6
124.0-124.5; 127.1-128.4

140
6.0
10
Mo, DR-Dby; Spt
Mo, Dby; 3mo

145.0