

Hole No. 11-1067

Collar Elev. 7441

Total Depth 142.0

Date: Beg. _____ Fin. _____

Location: Claim Mesa V

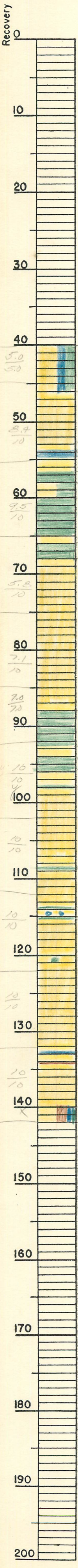
Dist. LUKACHUKAI DISTRICT, ARIZONA

Coord's 106 750, 93 299

Logged by LR

Recovery 90.2 %

92.8
102.0



Overburden
No Core Recovered

40.0
5.0 / 5.0
IBD: ss, M-F, wh-MBR-DBR;
46.0 Ms-sts, Dby-DBR, Fble

50
8.4 / 10
Ms, DR, spt
56.5 Ms, DR, spt
58.0 Ms, Dby, Bdg, Fble
60.0 IBD: ss, F, 2by-Dby, Ms, Dby, Fble
65.0 Ms, Mby-Dby-DBR, Bdg, Fble
70
5.8 / 10
75.0 ss, Dby, m, spt

80
7.1 / 10
85.0 ss, m, 2by-Mby, Bdg, Fble

90
7.0 / 7.0
88.0 Ms, Mby-Dby, Bdg, Fble
92.5 Ms, Dby, spt

100
4.0 / 10
95.0 ss, M-F, wh-2by, Bdg, Fble
100.0 Ms, Dby, spt (100g(a): Ms, Dby, 3ms(spt))
102.0

110
10 / 10
105.0 Ms, DR-Lbn, Gls.

120
10 / 10
110.0 Ms, Lbn-DR, Gls.
115.0 Ms, Lbn-DR, spt

130
10 / 10
120.0 Ms, Lbn-DR, Gls. ss, M-F, 20r-MOR, Bdg(P-N)

140
10 / 10
137.0 Ms, DR, spt
140.0 sts, Lbn-DR, spt
142.0 ss, m, 1yw, Bdg, Fble
140.0 Ms-sts, Dby-DBR, Bdg, Fble

