

Hole No. LU-62

Collar Elev 7202

Total Depth 149.5

Date:

Beg Fin. 10-20-52

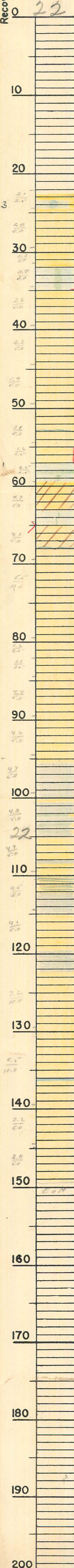
Location:

Claim
Dist. LUKACHUKAI DISTRICT, ARIZONA

Coord's 99635 N 99604 E

Logged by J.R.H.

Recovery 68 % 86/127



Overburden - No Core.

22.0 M, soft sh, coll sp, sandy, CN.
 22.5 F, wh, Ady 6-8, M. H. to 10' coll, fine s, c. cor. sp. CN.
 24.5 sh, sandy, redd, c. cor. sp. 7' to 10', CN.
 wh-sh, Ady 6, M. H., c. cor. sp. CN. F.
 26.0 F, Ady 6, M. H., c. cor. sp. CN. s. r. sand sh.

30.0 28.0 M, soft sh, coll sp, sandy, CN.
 29.0 F, Ady 6, M. H., c. cor. sp. CN.

35.0 32.0 M, soft sh, coll sp, sandy, CN.
 35.0 sandy sand coll sp seen in 0.1' at 34.7-35.0

40.0 38.0 M, soft sh, coll sp, sandy, CN.
 44.0 F, Ady 6, M. H., c. cor. sp. CN.

50.0 44.0 F, Ady 6, M. H., c. cor. sp. CN.
 47.0 F, Ady 6, M. H., c. cor. sp. CN.

60.0 51.0 F, Ady 6, M. H., c. cor. sp. CN.
 52.0 M, soft sh, coll sp, sandy, CN.
 53.0 F, Ady 6, M. H., c. cor. sp. CN.
 55.0 F, Ady 6, M. H., c. cor. sp. CN.
 57.0 M, soft sh, coll sp, sandy, CN.
 58.0 M, soft sh, coll sp, sandy, CN.
 59.0 M, soft sh, coll sp, sandy, CN.

65.0 62.0 M, soft sh, coll sp, sandy, CN.
 65.0 F, Ady 6, M. H., c. cor. sp. CN.

70.0 68.0 M, soft sh, coll sp, sandy, CN.

80.0 78.0 F, Ady 6, M. H., c. cor. sp. CN.
 82.0 F, Ady 6, M. H., c. cor. sp. CN.
 84.0 F, Ady 6, M. H., c. cor. sp. CN.

90.0 88.0 M, soft sh, coll sp, sandy, CN.
 92.0 F, Ady 6, M. H., c. cor. sp. CN.
 95.0 M, soft sh, coll sp, sandy, CN.

100.0 100.0 M, soft sh, coll sp, sandy, CN.
 101.0 M, soft sh, coll sp, sandy, CN.
 102.0 M, soft sh, coll sp, sandy, CN.
 103.0 M, soft sh, coll sp, sandy, CN.
 104.0 M, soft sh, coll sp, sandy, CN.
 105.0 M, soft sh, coll sp, sandy, CN.

110.0 107.0 F, Ady 6, M. H., c. cor. sp. CN.
 108.0 M, soft sh, coll sp, sandy, CN.

115.0 110.0 F, Ady 6, M. H., c. cor. sp. CN.
 112.0 M, soft sh, coll sp, sandy, CN.
 116.0 F, Ady 6, M. H., c. cor. sp. CN.

120.0 119.0 M, soft sh, coll sp, sandy, CN.
 122.0 F, Ady 6, M. H., c. cor. sp. CN.

130.0 129.0 F, Ady 6, M. H., c. cor. sp. CN.

140.0 136.0 M, soft sh, coll sp, sandy, CN.
 137.0 M, soft sh, coll sp, sandy, CN.
 138.0 F, Ady 6, M. H., c. cor. sp. CN.
 139.0 M, soft sh, coll sp, sandy, CN.
 149.5 Bottom

149.5

LU-62