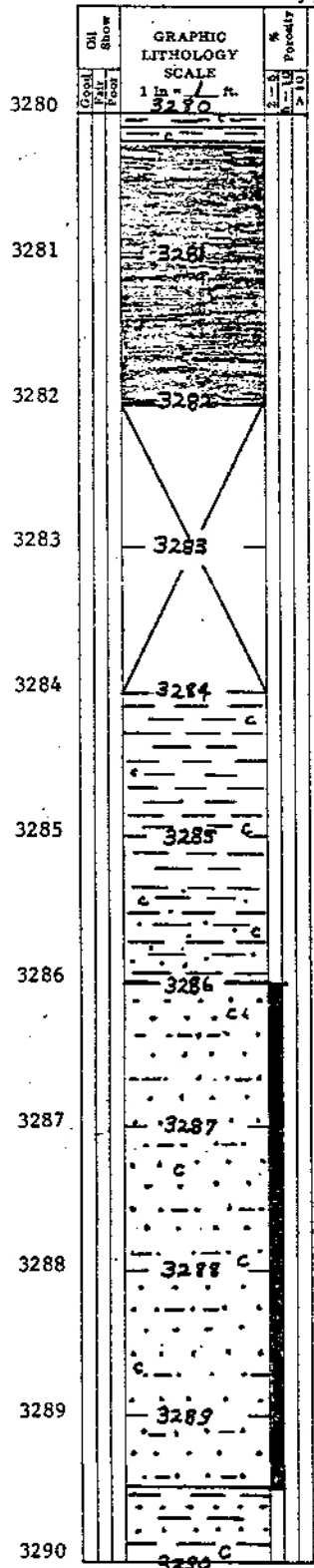




CONVENTIONAL CORE DESCRIPTION FORM

Well: TUNALIK #1 Core No: 1
 Date: 12/14/1978 T.D. 3308'
 Interval Cored: 3280'-3308' Formation: Lower Cretaceous
 Recovery: 26' Core Diameter: 4 Inches

GENERALIZED CORE DESCRIPTION: Interbedded dark-gray shale, subfissile to fissile, organic, with sandstone, light gray, very fine grained to fine grained, silty, argillaceous, poor to nil porosity, no show.



DETAILED CORE DESCRIPTION

Prepared By G.W. Legg

3280'-3280.2' Sh: dk gray, subfiss-fiss, organic to carb w/ leaf & plant stem imprints, sm thn lam of coal.

3280.2'-3282' Coal: blk, vit, subconcordal to concordal.

3282'-3284' No recovery.

3284'-3286' Sh: med gray, subfiss to fiss., micro mic, v. sl calc, rr carb inclc., mod ind, becoming silty-sandy towards btm.

3286'-3289.5' Ss: lt gy, v. fine grained to silty, grdg to siltstone, SA-SR, v. arg, v. sl calc, occ S&P from carb inclc, w. ind, p-nil por, N.S.

3289.5'-3292' Sh: med gy a/a, becoming org & carb interlam. w/ Ss: a/a; sm. cross bedding (15-20 degrees), true bedding horizontal.



CONVENTIONAL CORE DESCRIPTION FORM

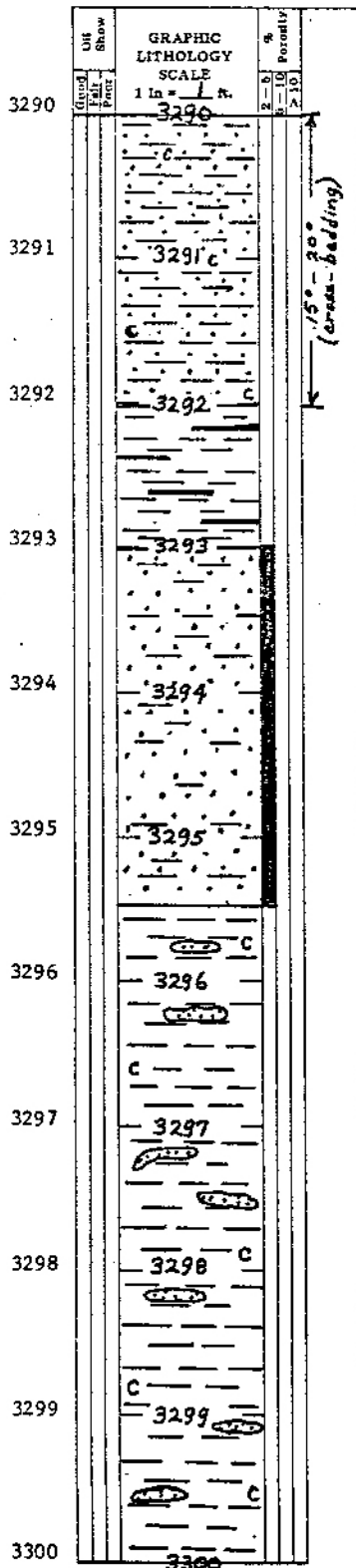
Well: TUNALIK #1 Core No: 1

Date: 12/14/1978 T.D. 3308'

Interval Cored: 3280'-3308' Formation: Lower Cretaceous

Recovery: 26' Core Diameter: 4 Inches

GENERALIZED CORE DESCRIPTION: _____



DETAILED CORE DESCRIPTION

Prepared By G.W. Legg

3290'

3291'

3292'

3293'

3294'

3295'

3295.5'-3305.5'

3296'

3297'

3298'

3299'

3300'

3292'-3293' Sh: a/a, but w/laminations of coal.

3293'-3295.5' Pred Ss: lt-med gy. vfg-slt, grds to sitst. v. arg. v. sl' calc. interbedded and interlaminated w/sh: a/a.

3295.5'-3305.5' Sh: dk gy. org a/a w/thn lam, blebs & inclc of Ss: a/a, sh varies from med to dk gy depending on organic & carb content.



CONVENTIONAL CORE DESCRIPTION FORM

Well: TUNALIK #1 Core No: 1

Date: 12/14/1978 T.D. 3308'

Interval Cored: 3280'-3308' Formation: Lower Cretaceous

Recovery: 26' Core Diameter: 4 Inches

GENERALIZED CORE DESCRIPTION:

Depth (ft)	Oil Show	Graphic Lithology Scale 1 in = 1 ft.	% Forams
3300		3300	
3301		3301	
3302		3302	
3303		3303	
3304		3304	
3305		3305	
3306		3306	
3307		3307	
3308		3308	

DETAILED CORE DESCRIPTION
Prepared By G.W. Legg

3305.5'-3307.5' Ss: a/a, w/occ thin laminations of sh a/a.

3307.5'-3308' Sh: dk gy, organic, carb A.A.



CONVENTIONAL CORE DESCRIPTION FORM

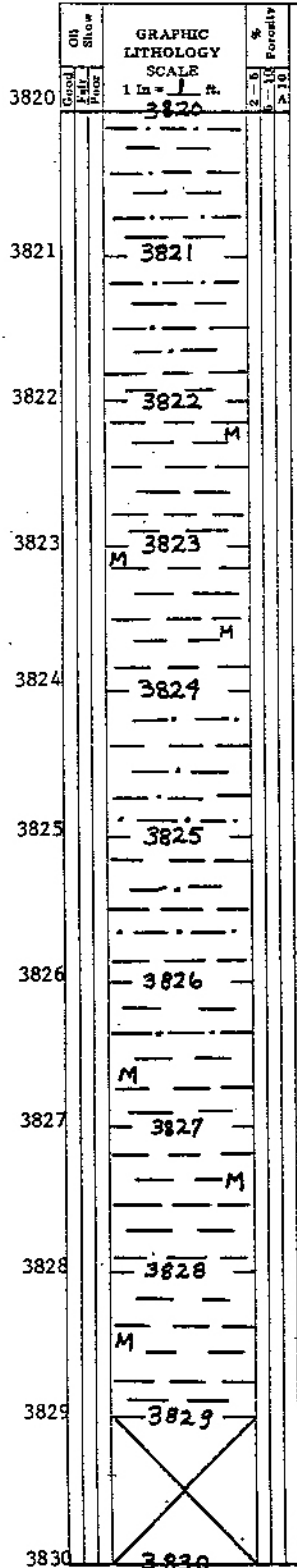
Well: TUNALIK #1 Core No: 2

Date: 12/16/78 T.D. 3830'

Interval Cored: 3820'-3830' Formation: Lower Cretaceous

Recovery: 9' Core Diameter: 4 Inches

GENERALIZED CORE DESCRIPTION: Sh: lt gy-med gy, v.f. micaceous, sub fiss-fiss, sl calc, mod ind., sl silty in part.



DETAILED CORE DESCRIPTION

Prepared By _____

3820'-3829' Sh: lt gy-med gy, v.f. mic. subfiss-fiss, sl calc, mod. ind., becoming sl silty in part; alternating from micaceous to non-micaceous & from sl silty to non-silty.

3829'-3830' No Recovery



CONVENTIONAL CORE DESCRIPTION FORM

05

Well: TUNALIK No. 1 Core No: 3

Date: 12/25/78 T.D. 5562'

Interval Cored: 5552-5562' Formation: Lower Cretaceous

Recovery: 9.5' Core Diameter: 4 Inches

GENERALIZED CORE DESCRIPTION: _____

23

Depth (ft)	OH Show	GRAPHIC LITHOLOGY SCALE 1 in = 1 ft.	% Porosity	
			2-6	7-10
5552		5552		
	M			
	M			
5553		5553		
	M			
	M			
5554		5554		
	M			
	M			
5555		5555		
5556		5556		
5557		5557		
5558		5558		
5559		5559		
5560		5560		
5561		5561		
5562		5562		

DETAILED CORE DESCRIPTION
Prepared By G. Legg

5552-5553' Sh: dk gy, fiss, v.f. mic, v. sl. calc. sl. slty.

5553-5557.5' Sh: med gy, subfiss, micro-mica to non-mica, no longer slty-approaching clsta.

5557.5-5560 Ss: gy-v. lt tan, fg-vfg, mod. strtd, SA-SR, abnt fld, rr gm min, prob chlorite alteration - not glauc., S & P from carb part., v. hvy mix of calc mtl & wf clay; acid reaction reduces Ss to gas & aggregates, w. ind w/ v.p. intergranular por, N.S.

5560-5561.5 Ss: a/a, but bcm more f.g., slty & arg w/sm indication of dead oil str along breakage planes - no cut or fluorescence, grades in final 1/2' to less arg & slty w/no dead oil str.



CONVENTIONAL CORE DESCRIPTION FORM

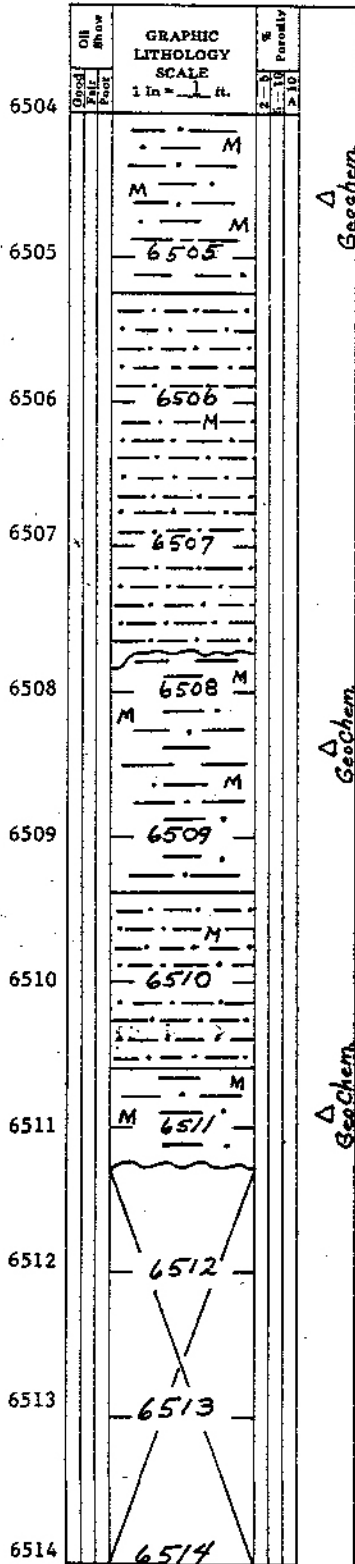
Well: TUNALIK RIVER #1 Core No: 4

Date: January 2, 1979 T.D. 6514'

Interval Cored: 6504'-6514' Formation: TOROK

Recovery: 7.25' Core Diameter: 4 1/2 Inches

GENERALIZED CORE DESCRIPTION: Intbdd. Shale, dk. gry-brn., silty, plty., micromica.,
fn. carbon. incl., w.-mod. ind. w/siltstone, sdy., lt. gy.,
S & P, fr. sort., rr mica, hd., brittle, blk., horizontal bedding



Geochem

DETAILED CORE DESCRIPTION
Prepared By Dave Fenex

6504'-6505.25' (1.25') Sh: dk. gy., silty, micromica., fn. diss. carbon incl. w.-mod. ind. w/ thin horiz. irreg. siltstone, sdy., lt. gy., S & P, sl. calc., w. ind. laminae.

6505.25'-6507.7' (2.45') Siltst., lt. gy., sdy., S & P, fr. sort. sp/SA, rr mica., hd., brittle, sl. calc., nil integr. por. NS w/ thin shale laminae, a/a.

v irregular blebs.

6507.7'-6509.5' (1.8') Shale, a/a., w/ thin lamin., a/a.

6509.5'-6510.6' (1.1') Siltst., lt. gy., sdy., a/a w/ thin shale laminae, a/a.

6510.6'-6511.25' (0.65') Sh., a/a, w/ thin siltstone, laminae.

6511.25'-6514' (2.75') Not Recovered.



HUSKY OIL NPR OPERATIONS, INC.
U.S. GEOLOGICAL SURVEY/ONPRA

CONVENTIONAL CORE DESCRIPTION FORM

Page 1 of 1

Well: TUNALIK RIVER No. 1 Core No: 5
Date: January 18, 1979 T.D. 7880'
Interval Cored: 7870'-7880' Formation: TOROK
Recovery: 10' Core Diameter: 4 Inches

GENERALIZED CORE DESCRIPTION: Shale, dk. gry.-brn., silty, fiss.-platy, micromica., w/r fr.-med. carbon, incl., mod. ind. w/occ. thin irregular laminations & blebs of Siltstone, gry., S. & P., sdy. in part, sm. carbon. incl., hd., brittle.

Depth (ft)	Core No.	Interval	GRAPHIC LITHOLOGY SCALE		Porosity (%)
			1 in = 1 ft	1 in = 1 ft	
7870		7870			
			M		
7871		7871			
				M	
7872		7872	M		
				M	
7873		7873		M	
7874		7874			
			M		
7875		7875			
				M	
7876		7876			
			M		
			oo o		
7877		7877			
7878		7878			
			M		
7879		7879			
				M	
7880		7880			

DETAILED CORE DESCRIPTION

Prepared By Dave Fenex

7870'-7873' (3')

Shale, dk. gry.-brn., silty, micromica. fr.-med. carbon, incl., mod. ind., w/r siltstone lamination, gry., S. & P., sdy. in part., sm. carbon. incl., hd., brittle.

7873'-7874' (1')

Shale, a/a. w/incr. in siltstone laminations.

7874'-7877' (3')

Shale, a/a.

Irregular siltstone blebs.

7877'-7878' (1')

Incr. in siltstone laminations.

7878'-7880' (2')

Shale, a/a.



CONVENTIONAL CORE DESCRIPTION FORM

Well: TUNALIK NO. 1 Core No: 6
Date: 2/23/79 T.D. 8810'
Interval Cored: 8782'-8810' Formation: TOROK
Recovery: 28' Core Diameter: 4 Inches

GENERALIZED CORE DESCRIPTION: _____

* 6

Depth Feet	Oil Show	GRAPHIC LITHOLOGY SCALE 1 in = 3 ft.	Porosity %
8782		8782	
8785		8785	
8788		8788	
8791		8791	
8794		8794	
8797		8797	
8800		8800	
8803		8803	
8806		8806	
8809		8809	

DETAILED CORE DESCRIPTION G.W. LEGG
Prepared By _____

8782-8810 Shale: varies from medium gray to dark gray, micromicaceous, very slightly calcareous, brittle, subfissile, slightly splintery with occasional irregular turbidite structures of very fine grained sandstone grading to siltstone; light gray, very fine grained to silt, moderately calcareous, tightly cemented with calcite, clay and probably silica; abundant recrystallization of quartz grains forming distinct crystal faces; bedding horizontal as evidenced from breakage; appears to be non-fossiliferous except for plant and wood remains 8805'-8808'



HUSKY OIL NPR OPERATIONS, INC.
U.S. GEOLOGICAL SURVEY/ONPRA

CONVENTIONAL CORE DESCRIPTION FORM

Page 1 of 1

Well: TUNALIK #1 Core No: 7

Date: March 10, 1979 T.D. 10,502'

Interval Cored: 10,472' - 10,502' Formation: TOROK

Recovery: 30' Core Diameter: 4 Inches

GENERALIZED CORE DESCRIPTION: Shale: medium gray, submetallic lustre, micro-micaceous to very finely micaceous, subfissile.

Depth (ft)	Graphic Lithology	% Recovery	Notes
10,472	M		
10,475	10,475		
10,478	10,478		
10,481	10,481		
10,484	10,484		
10,487	10,487		
10,490	10,490 M		
10,493	10,493		
10,496	10,496		
10,499	10,499		
10,502	10,502		

DETAILED CORE DESCRIPTION
Prepared By G.W. Legg

Shale: medium gray, submetallic lustre, micro-micaceous to very finely micaceous, non-calcareous to very slightly calcareous, subfissile, breaks into splintery fragments at random angles, hard, brittle, rare irregular patches and beds becoming silty to sandy, no observed fossils, no defined bedding.



CONVENTIONAL CORE DESCRIPTION FORM

Well: TUNALIK No. 1 Core No: 8
Date: MARCH 12, 1979 T.D. 10,702
Interval Cored: 10,671' - 10,702' Formation: PEBBLE SHALE
Recovery: 31' Core Diameter: 4 Inches

GENERALIZED CORE DESCRIPTION: Shale; medium to charcoal gray, moderately fissile, very finely micaceous, very slightly calcareous, organic.

Depth (ft)	Dip (deg)	Lithology	Fossils	Porosity	
				%	Permeability
10,670		M			
10,673		M			
10,676		M			
10,679		M			
10,682		M			
10,685		M			
10,688		M			
10,691		M			
10,694		M			
10,697		M			
10,700		M			

DETAILED CORE DESCRIPTION
Prepared By G.W. Legg

31' Shale; medium to charcoal gray, moderately fissile, very finely micaceous with occasional flakes up to 1mm; occasionally breaks with conchoidal fracture, very slightly calcareous, greasy appearance when damp, organic, rare nodules of pyrite, typically less than 1 mm, occasionally up to 2 mm, becoming more abundant and with veinlets of pyrite below 10,678'; very rare scattered random very fine grained to medium grained polished and clear subrounded and rounded quartz grains; 45 degree fracture @ 10,682 - 10,683' with very smooth grooved surface - possibly slickensides; two parallel sets of 45 degree fractures @ 10,687' - 10,688'; pyritized worm borings or trace fossils @ 15 deg. to bedding 10,693 - 10,694 & 10,696 - 10,697; bedding essentially horizontal.



HUSKY OIL NPR OPERATIONS, INC.
U.S. GEOLOGICAL SURVEY/ONPRA

CONVENTIONAL CORE DESCRIPTION FORM

Page 2 of 2

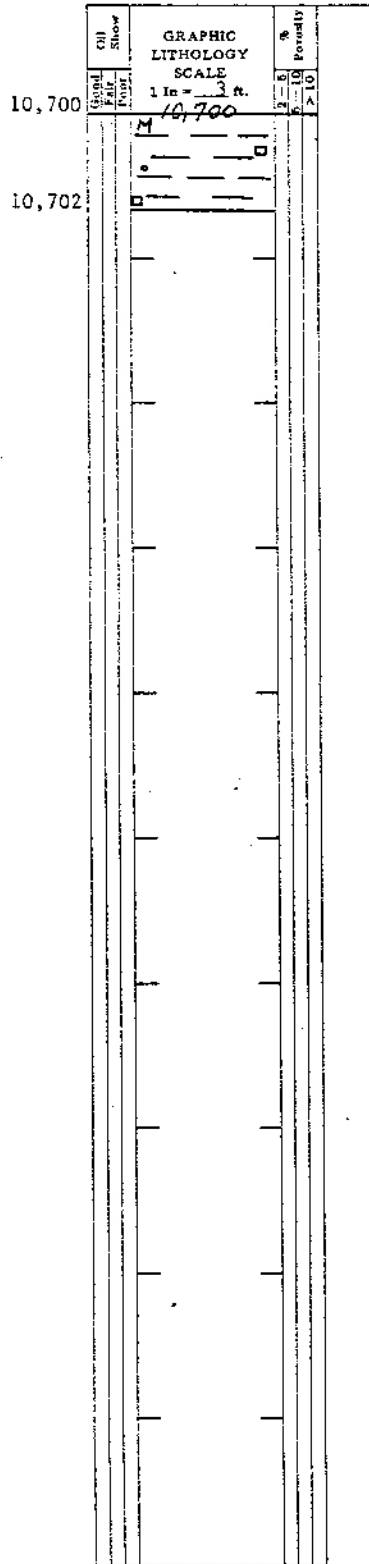
Well: TUNALIK No. 1 Core No: 8

Date: March 12, 1979 T.D. 10,702'

Interval Cored: 10,671' - 10,702' Formation: PEBBLE SHALE

Recovery: 31' Core Diameter: 4 Inches

GENERALIZED CORE DESCRIPTION: _____



DETAILED CORE DESCRIPTION
Prepared By G.W. Legg

Blank area for detailed core description with horizontal lines.



HUSKY OIL NPR OPERATIONS, INC.
U.S. GEOLOGICAL SURVEY/ONPRA

CONVENTIONAL CORE DESCRIPTION FORM

Well: TUNALIK No. 1 Core No: 9
Date: MARCH 15, 1979 T.D. 10,940'
Interval Cored: 10,910' - 10,940' Formation: KUPARUK SS
Recovery: 30' Core Diameter: 4 Inches

GENERALIZED CORE DESCRIPTION: Ss: lt. gray, very fine grained to fine grained, very tight, calc., hard and dense, glauc.

69

Depth (ft.)	Graphic Lithology Scale (1 in. = 1 ft.)	% Porosity
10,910	10,910	
10,911	10,911	
10,912	10,912	
10,913	10,913	
10,914	10,914	
10,915	10,915	
10,916	10,916	
10,917	10,917	
10,918	10,918	
10,919	10,919	
10,920	10,920	

DETAILED CORE DESCRIPTION
Prepared By G.W. Legg

10,910 - 10,914' (4.0') Sandstone: light gray, very fine grained slightly silty & argillaceous, moderately calcareous, tightly cemented with silica and calcite, very hard and dense, fragments of gray to white mineral - probably altered feldspar, some secondary recrystallization of quartz grains, occasional muscovite flakes, subangular to subrounded, moderately sorted; poor to very poor intergranular porosity, no show; occasional weak hair-line 75 degree fractures - no mineralization on fracture planes.

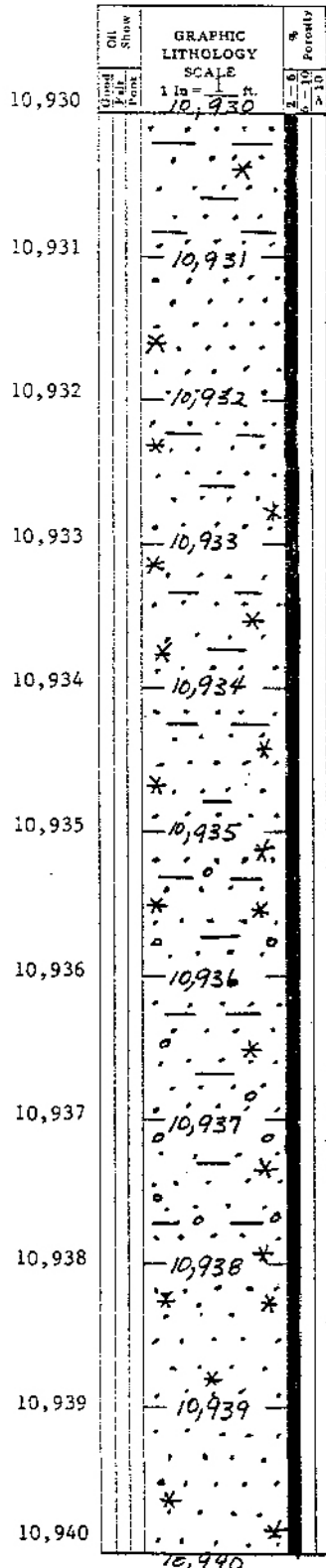
10,914' - 10,931' (17.0') Sandstone: mostly as above, but somewhat more shaly with occasional specks of green mineral - probably glauconite; some veinlets and small pods and laminae of dark gray, argillaceous, carbonaceous material; very poor intergranular porosity. No shows; fractured as above; two approximately 1/2" shaly sandstone partings 10,920 - 10,921 and 10,924 - 10,925; decrease in glauconite toward bottom of interval.



CONVENTIONAL CORE DESCRIPTION FORM

Well: TUNALIK No. 1 Core No: 9
Date: MARCH 15, 1979 T.D. 10,940'
Interval Cored: 10,910' - 10,940' Formation: KUPARUK SS
Recovery: 30' Core Diameter: 4 Inches

GENERALIZED CORE DESCRIPTION: _____



DETAILED CORE DESCRIPTION G.W. Legg
Prepared By _____

10,931'-10,932' (1.0') Sandstone: as above, but becoming slightly cleaner, no shaly carbonaceous veinlets and pods, very poor porosity; No shows.

10,932'-10,935' (3.0') Sandstone as in 17-foot interval above, but with increase in glauconite, very poor porosity; No shows.

10,935'-10,938' (3.0') Sandstone: becoming poorly sorted with grains ranging from very fine grained to medium grained with occasional subrounded to rounded coarse grained quartz, increase in amount and grain size of soft waxy mineral - glauconite (?); poor porosity; No show.

10,938'-10,940' (2.0') Sandstone: becoming cleaner, mostly fine grained, well sorted with decrease in glauconite, very hard and dense, slightly more calcareous, some small fragments of white to gray mineral - probably feldspar; poor intergranular porosity; No show.

NOTE * entire core very weakly fractured with hairline fractures nearly vertical (75 deg.) - no apparent bedding-breaks at all angles.



HUSKY OIL NPR OPERATIONS, INC.
U.S. GEOLOGICAL SURVEY/ONPRA

CONVENTIONAL CORE DESCRIPTION FORM

Well: TUNALIK No. 1 Core No: 10

Date: MARCH 30, 1979 T.D. 11,694'

Interval Cored: 11,672'-11,694' Formation: KINGAK

Recovery: 23' (cut 22') Core Diameter: 4 Inches
(core barrel jammed.) Sh, dk. gy.-brn.-blk., silty., micro-mica., carbon. partings

GENERALIZED CORE DESCRIPTION: w/submetallic luster, w. ind., plty.-fiss., occ. worm burrows
w/ v. thinly bedded Ss., cl. to lt. gy-brn., m.g.-occ. c.g., comm. blk. ferromag. min.,
SA-SR, fr. sort., mica., p. intgr. por., N.S. Bottom 2' is badly broken & weakly fract.,

D/O

(75 deg.). Bedding planes essentially horizontal.

DETAILED CORE DESCRIPTION
Prepared By DAVE FENEX

Depth ft.	Graphic Lithology Scale 1 in = 1 ft.	Oil Show	
		Free	Bound
11,673	11673		
11,674	11674		
11,675	11675		
11,676	11676		
11,677	11677		
11,678	11678		
11,679	11679		
11,680	11680		
11,681	11681		
11,682			

11,672'-11,681' (9.0') Sh., dk. grv.-brn. to blk., silty, micro-mica., carbon. part., w/submetallic luster, w/ind., plty.-fiss., w/ lenses and v. thinly bdd. (1/8" - 1/2") zones of Ss. clear to lt. gy-brn., m.g. - occ. c.g., common cfs. blk. ferromag. min., SR-SA, fr. sort., arg. in part., p. intgr. por.; N.S., sm. mica. Ss. & Sh. are in approx. equal amounts.

Occasional worm burrow filled w/ Ss.

11,681'-11,686' (5.0') Pred. Sh., a/a w/ decr. in no. of ss. laminae & lenses.



HUSKY OIL NPR OPERATIONS, INC.
U.S. GEOLOGICAL SURVEY/ONPRA

CONVENTIONAL CORE DESCRIPTION FORM

Well: TUNALIK No. 1 Core No: 10

Date: MARCH 30, 1979 T.D. 11,694'

Interval Cored: 11,672'-11,694' Formation: KINGAK

Recovery: 23' (cut 22') Core Diameter: 4 Inches

GENERALIZED CORE DESCRIPTION: _____

Depth	Graphic Lithology Scale 1 in. = 1 ft.	% Porosity	
		2-5	>10
11,683	11683		
11,684	11684		
11,685	11685		
11,686	11686		
11,687	11687		
11,688	11688		
11,689	11689		
11,690	11690		
11,691	11691		
11,692			

DETAILED CORE DESCRIPTION
Prepared By DAVE FENEX

11,681'-11,686' (cont.)

11,686'-11,688' (2.0') ^{rating} Alter thin bands of Sh. a/a. & Ss. a/a in approximately equal amounts.

11,688'-11,692.5' (4.5') Pred. Sh., blk. to dk. gry., -brn. a/a. w/decr. in lenses and partings of Ss., a/a.

Occasional worm burrow.

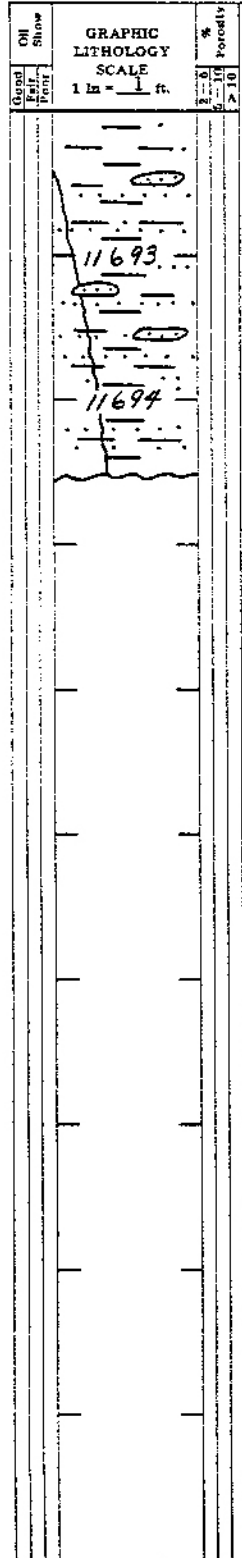


HUSKY OIL NPR OPERATIONS, INC.
U.S. GEOLOGICAL SURVEY/ONPRA

CONVENTIONAL CORE DESCRIPTION FORM

Well: TUNALIK No. 1 Core No: 10
 Date: MARCH 30, 1979 T.D. 11,694'
 Interval Cored: 11,672'-11,694' Formation: KINGAK
 Recovery: 23' (cut 22') 100% Core Diameter: 4 Inches

GENERALIZED CORE DESCRIPTION: _____



DETAILED CORE DESCRIPTION
Prepared By DAVE FENEX

11,688'-11,692.5' (4.5')

11,692.5'-11,694.5' (2.0') ^{naïna} Alterⁿ equal bands of Sh., a/a.
and Ss., a/a.

Core is badly broken & weakly fractured in bottom 2'. Fract. is nearly vertical. (75 deg.)

Bedding planes throughout core are essentially horizontal.

OK



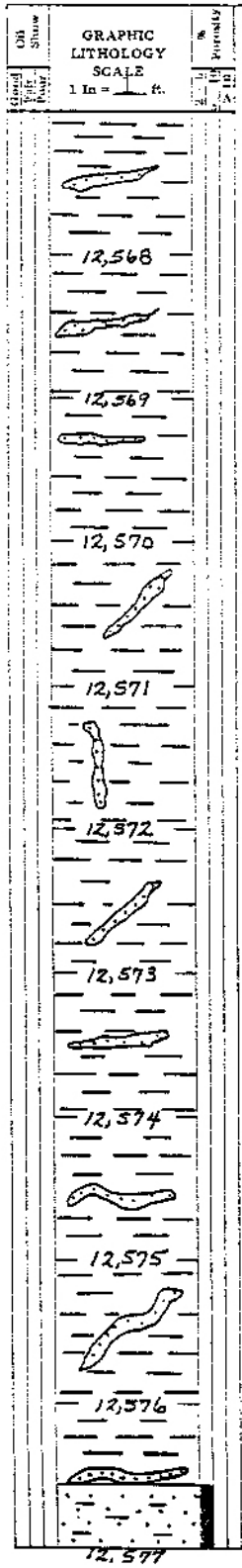
HUSKY OIL NPR OPERATIONS, INC.
U.S. GEOLOGICAL SURVEY/ONPRA

CONVENTIONAL CORE DESCRIPTION FORM

Page 1 of 3

Well: TUNALIK No. 1 Core No: 11
Date: JUNE 16, 1979 T.D. 12, 597'
Interval Cored: 12,567'-12,597' Formation: Kingak
Recovery: 30' Core Diameter: 4 1/2" Inches

GENERALIZED CORE DESCRIPTION: Shale: dark gray to black, subfissile, non-calcareous, interbedded with Sandstone: medium gray, very fine grained, well indurated, p-nil porosity; No shows.



DETAILED CORE DESCRIPTION

Prepared By G. Legg

12,567'-12,576.5 (9.5') Shale: dark gray to black, very finely micaceous and slightly silty along lenses and bedding planes, subfissile, organic, non-calcareous, moderate to well indurated, irregular wavy lenses and nodules of very fine grained sandstone and siltstone, occasionally assuming near vertical apparent bedding - probably slump structures - bedding becoming near 45 degree @ 12,572-12,573 and 12,575-12,576: occasional bleeding zones - no gas odor; one observed pelecypod shell @ 12,571



HUSKY OIL NPR OPERATIONS, INC.
U.S. GEOLOGICAL SURVEY, ONPRA

CONVENTIONAL CORE DESCRIPTION FORM

Well: TUNALIK NO. 1 Core No: 11
 Date: June 16, 1979 T.D. 12,597'
 Interval Cored: 12,567'-12,597' Formation: Kingak
 Recovery: 30' Core Diameter: 4 1/2 Inches

GENERALIZED CORE DESCRIPTION: _____

Depth (ft)	Oil Show	GRAPHIC LITHOLOGY SCALE 1 in = 1 ft 12,577	% Porosity
12577			
12578			
12579			
12580			
12581			
12582			
12583			
12584			
12585			
12586			
12587			

DETAILED CORE DESCRIPTION

Prepared By G. Legg

12,576.5'-12,591' (14.5')
 Pred Ss: med. gray, very fine grained, moderately sorted, slightly argillaceous, very slightly calcareous, well cemented with silica, subangular to sub-rounded, very quartzitic in part with some approaching orthoquartzite, breaking across grains, very well indurated, very poor to nil porosity, occasional lenses with poor porosity, no shows, occasional bleeding in both shales and sandstones - mostly appears along bedding planes, interbedded and interlaminated with shale, as above; occasional small vugs up to 2 cm long and 3-4 mm wide, some bleeding gas - no odor or show.

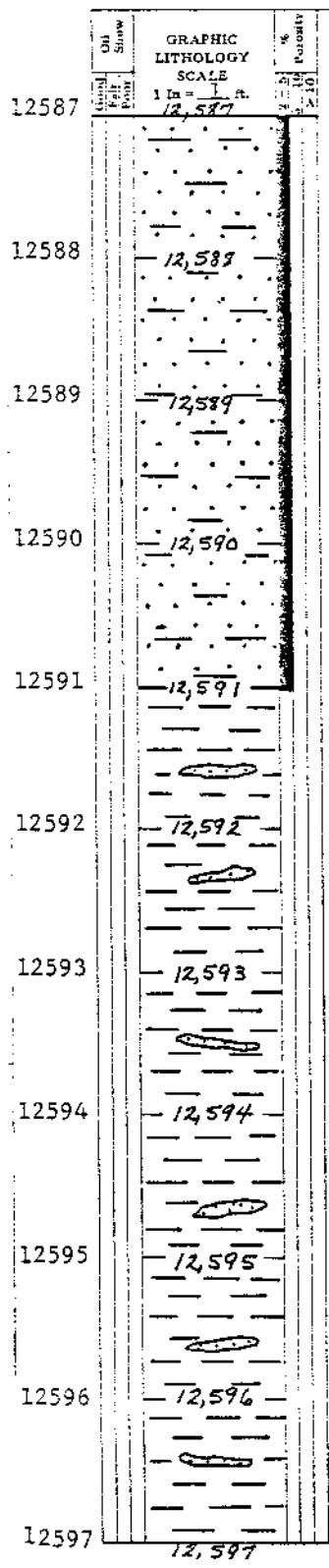


HUSKY OIL NPR OPERATIONS, INC.
U.S. GEOLOGICAL SURVEY/ONPRA

CONVENTIONAL CORE DESCRIPTION FORM

Well: TUNALIK No. 1 Core No: 11
 Date: June 16, 1979 T.D. 12,597'
 Interval Cored: 12,567' - 12,597' Formation: Kingak
 Recovery: 30' Core Diameter: 4 1/2 Inches

GENERALIZED CORE DESCRIPTION: _____



DETAILED CORE DESCRIPTION
Prepared By G. Legg

12,591'-12,597' (6.0') Predominantly Shale, as above
 with interbedded and interlaminated
 pods and lenses of quartzitic
 sandstone, as above.

OK



HUSKY OIL NPR OPERATIONS, INC.
U.S. GEOLOGICAL SURVEY/ONPRA

CONVENTIONAL CORE DESCRIPTION FORM

Page 1 of 1

Well: Tunalik No. 1 Core No: 12

Date: August 15, 1979 T.D. 14,856'

Interval Cored: 14846' - 14856' Formation: Sadlerochit (?)

Recovery: 9' Core Diameter: 2 5/8" Inches

GENERALIZED CORE DESCRIPTION: Shale, black, silty, well indurated, fissile to platy, slightly to moderately calcareous, finely disseminated mica, isolated inclusions of pyrite.

Core Interval (ft)	Graphic Lithology Scale	% Porosity
14846	M	
14847	M	
14848	M	
14849	M	
14850	M	
14851	M	
14852	M	
14853	M	
14854	M	
14855	M	
14856	X	

DETAILED CORE DESCRIPTION

Prepared By Dave Fenex

14846' - 856' (9.0') Shale, black, silty, well indurated, fissile to platy, slightly to moderately calcareous, finely disseminated mica, isolated inclusions of pyrite.

14855' - 856' (1.0) Not Recovered



HUSKY OIL NPR OPERATIONS, INC.
U.S. GEOLOGICAL SURVEY/ONPRA

OK

CONVENTIONAL CORE DESCRIPTION FORM

Page 1 of 3

Well: Tunalik No. 1 Core No: 13

Date: August 22, 1979 T.D. 15,438'

Interval Cored: 15,408' - 15,438' Formation: Sadlerochit

Recovery: 30' Core Diameter: 2 5/8" Inches

* 13

GENERALIZED CORE DESCRIPTION: Shale, black, subfissile to platy, well indurated, non-calc., fn. diss. mica, becomes silty in part, no dip.

Depth (ft.)	Oil Show		GRAPHIC LITHOLOGY SCALE 1 in. = 1 ft.	Porosity (%)
	Gravel	Flint		
15408			M	
			M	
15409			M	
			M	
15410			M	
			M	
15411			M	
			M	
15412			M	
			M	
15413			M	
			M	
15414			M	
			M	
15415			M	
			M	
15416			M	
			M	
15417			M	
			M	
15418			M	

DETAILED CORE DESCRIPTION

Prepared By Dave Fenex

15408'-415' (7.0') Shale, black, subfissile to platy, well indurated, non-calcareous, finely disseminated mica, rare black minute carbonaceous inclusions.

15,415-15,417.5' (2.5') Shale, as above, becomes very silty, thinly laminated, flat dip, very fossiliferous (1/4" bivalves), grades to Siltstone.

15,417.5' - 15,430.5' (13.0') Shale, black, as above, rare fossils.



HUSKY OIL NPR OPERATIONS, INC.
U.S. GEOLOGICAL SURVEY/ONPRA

CONVENTIONAL CORE DESCRIPTION FORM

Page 2 of 3

Well: Tunalik No. 1 Core No: 13

Date: August 22, 1979 T.D. 15,438'

Interval Cored: 15,408' - 15,438' Formation: Sadlerochit

Recovery: 30' Core Diameter: 2 5/8" Inches

GENERALIZED CORE DESCRIPTION: _____

Core Depth (ft)	Oil Show	GRAPHIC LITHOLOGY SCALE 1 in = 1 ft. <u>15418</u>	% Porosity	Detailed Core Description
15418				
15419		<u>15419</u>		
15420		<u>15420</u>		
15421		<u>15421</u>		
15422		<u>15422</u>		
15423		<u>15423</u> ⊗		
15424		<u>15424</u> ⊗		
15425		<u>15425</u> ⊗ ⊗ ⊗		<u>Shale, as above, becomes silty, fossiliferous.</u>
15426		<u>15426</u> ⊗		
15427		<u>15427</u> ⊗		
15428		<u>15428</u>		



HUSKY OIL NPR OPERATIONS, INC.
U.S. GEOLOGICAL SURVEY/ONPRA

CONVENTIONAL CORE DESCRIPTION FORM

Well: Tunalik No. 1 Core No: 13

Date: August 22, 1979 T.D. 15,438'

Interval Cored: 15,408' - 15,438' Formation: Sadlerochit

Recovery: 30' Core Diameter: 2 5/8" Inches

GENERALIZED CORE DESCRIPTION: _____

Depth (ft)	Oil Show	GRAPHIC LITHOLOGY SCALE 1 in = 1 ft.	% Porosity	
			10-150	150-200
15428		15428		
15429		15429		
15430		15430		
15431		15431		
15432		15432		
15433		15433		
15434		15434		
15435		15435		
15436		15436		
15437		15437		
15438		15438		

DETAILED CORE DESCRIPTION

Prepared By Dave Fenex

Shale, as above, slightly silty.

15,430.5' - 15,434' (3.5') Shale, a.a., becomes very silty, fossiliferous (1/4" bivalves), minute carbonaceous inclusions.

15,434' - 15,438' (4.0') Shale, as above.



CONVENTIONAL CORE DESCRIPTION FORM

Well: TUNALIK No. 1 Core No: 14
 Date: September 2, 1979 T.D. 16,261
 Interval Cored: 16,236' - 16,261' (25') Formation: Sadlerochit
 Recovery: 25' Core Diameter: 2 5/8" Inches

GENERALIZED CORE DESCRIPTION: Siltstone, med. dk. gry., v. argillaceous, fn. diss. mica., v.w. ind., siliceous, blocky; thinly laminated rr/shale, black, silty to smooth, platy. to subfiss., rare pyr. nod., fn. diss. mica., w. ind., non-calc.; laminae vary from 1/8" - 1/2".

Depth (ft.)	Oil Show	GRAPHIC LITHOLOGY SCALE 1 in. = 1 ft.	Porosity	
			N	A
16236		M		
		□		
16237		M		
		16237		
		M		
		□		
16238		M		
		16238		
		M		
		□		
16239		M		
		16239		
		M		
		□		
16240		M		
		16240		
		M		
		□		
16241		M		
		16241		
		M		
		□		
16242		M		
		16242		
		M		
		□		
16243		M		
		16243		
		M		
		□		
16244		M		
		16244		
		M		
		□		
16245		M		
		16245		
		M		
		□		
16246		M		

DETAILED CORE DESCRIPTION

Prepared By Dave Fenex

16,236'-261' (25') Siltstone, medium dark gray, very argillaceous, finely disseminated mica, very well indurated, siliceous, blocky; thinly (1/8" - 1/2") laminated with shale, black, silty to smooth, platy to subfissile, rare pyrite nodules, finely disseminated mica, well indurated, non-calcareous.
 Density of rock exceeds 2.6; Bedding planes exhibit about 8 degree dip.



HUSKY OIL NPR OPERATIONS, INC.
U.S. GEOLOGICAL SURVEY/ONPRA

CONVENTIONAL CORE DESCRIPTION FORM

Well: TUNALIK No. 1 Core No: 14
 Date: September 2, 1979 T.D. 16,261'
 Interval Cored: 16,236'-16,261' (25') Formation: Sadlerochit
 Recovery: 25' Core Diameter: 2 5/8" Inches

GENERALIZED CORE DESCRIPTION: _____

11 17

Depth (ft)	Oil Show	GRAPHIC LITHOLOGY SCALE 1 in = 1 ft	Porosity (%)
16246		16246	
	M		
16247		16247	
	M		
16248		16248	
	M		
16249		16249	
	M		
16250		16250	
	M		
16251		16251	
	M		
16252		16252	
	M		
16253		16253	
	M		
16254		16254	
	M		
16255		16255	
	M		
16256		16256	

DETAILED CORE DESCRIPTION

Prepared By Dave Fenex

Siltstone and Shale, as above.



HUSKY OIL NPR OPERATIONS, INC.
U.S. GEOLOGICAL SURVEY/ONPRA

CONVENTIONAL CORE DESCRIPTION FORM

Well: TUNALIK No. 1 Core No: 14
 Date: September 2, 1979 T.D. 16,261'
 Interval Cored: 16,236' - 16,261' (25') Formation: Sadlerochit
 Recovery: 25' Core Diameter: 2 5/8" Inches

GENERALIZED CORE DESCRIPTION: _____

Depth (ft)	Grain Size	Oil Show	GRAPHIC LITHOLOGY SCALE	Porosity (%)	P.I.	DETAILED CORE DESCRIPTION	
						Prepared By	Notes
16256			1 in = 1 ft 16256			Dave Fenex	Siltstone and Shale, as above
			M				
			M				
16257			16257				
			M				
			M				
16258			16258				
			M				
			M				
16259			16259				
			M				
			M				
16260			16260				
			M				
			M				
16261			16261				



HUSKY OIL NPR OPERATIONS, INC.
U.S. GEOLOGICAL SURVEY/ONPRA

CONVENTIONAL CORE DESCRIPTION FORM

Page 1 of 3

Well: TUNALIK No. 1 Core No: 15

Date: September 13, 1979 T.D. 16,959'

Interval Cored: 16,929'-959' (30') Formation: Echooka

Recovery: 21' Core Diameter: 2 5/8" Inches

GENERALIZED CORE DESCRIPTION: Siltstone, dark gray to black, very argillaceous, sandy, quartzitic, very hard and brittle.

Core Depth (ft)	Oil Show	GRAPHIC LITHOLOGY SCALE 1 in = 1 ft.	Porosity
16929		16929	
		M	
		*	
		□	
16930		16930	
		M	
		*	
		□	
16931		16931	
		M	
		*	
		□	
		M	
16932		16932	
		□	
		M	
		*	
		□	
		M	
16933		16933	
		M	
		*	
		□	
16934		16934	
		□	
		M	
		*	
		□	
		M	
16935		16935	
		□	
		M	
		*	
		□	
		M	
16936		16936	
		□	
		M	
		*	
		□	
		M	
16937		16937	
		□	
		M	
		*	
		□	
		M	
16938		16938	
		□	
		M	
		*	
		□	
16939		16939	

DETAILED CORE DESCRIPTION
Prepared By Dave Fenex

16929'-16,950' (21'): Siltstone, dark gray to black, sandy, very argillaceous, common large pale green (altered?) glauconite pellets, fine disseminated mica; common coarse black, shiny biotite minerals; finely disseminated pyrite and pyrite nodules; non-calcareous; occasional convoluted slump structures; extremely hard and brittle, quartzitic; exhibits 25 degree dip.



HUSKY OIL NPR OPERATIONS, INC.
U.S. GEOLOGICAL SURVEY/ONPRA

CONVENTIONAL CORE DESCRIPTION FORM

Well: TUNALIK No. 1 Core No: 15
 Date: September 13, 1979 T.D. 16,959'
 Interval Cored: 16,929'-16,959' Formation: Echooka
 Recovery: 21' Core Diameter: 2 5/8" Inches

GENERALIZED CORE DESCRIPTION: _____

Depth (ft)	Oil Show	GRAPHIC LITHOLOGY SCALE	Porosity (%)
16939		16939	
		M	
		X	
		M	
16940		16940	
		M	
		X	
		M	
16941		16941	
		M	
		X	
		M	
16942		16942	
		M	
		X	
		M	
16943		16943	
		M	
		X	
		M	
16944		16944	
		M	
		X	
		M	
16945		16945	
		M	
		X	
		M	
16946		16946	
		M	
		X	
		M	
16947		16947	
		M	
		X	
		M	
16948		16948	
		M	
		X	
		M	
16949		16949	

DETAILED CORE DESCRIPTION
Prepared By Dave Fenex

Blank area for detailed core description.



HUSKY OIL NPR OPERATIONS, INC.
U.S. GEOLOGICAL SURVEY/ONPRA

CONVENTIONAL CORE DESCRIPTION FORM

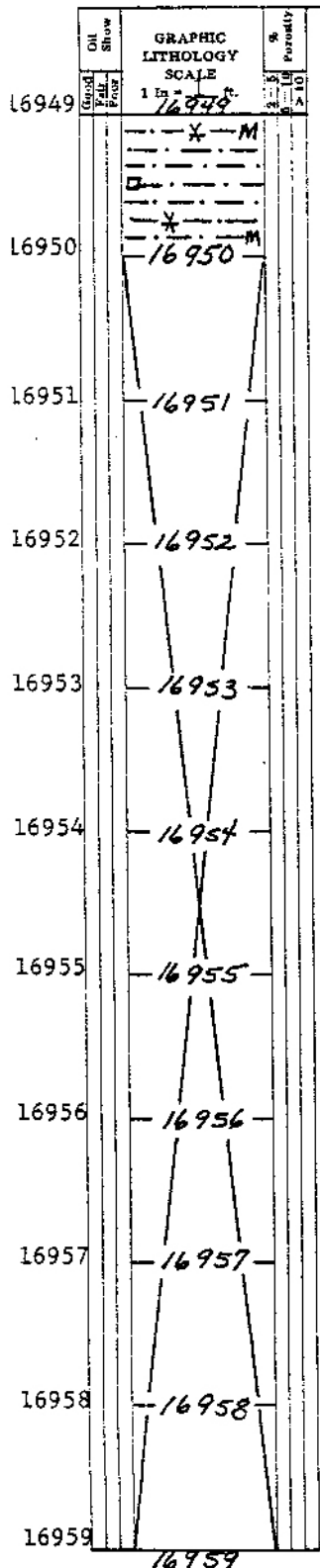
Well: TUNALIK No. 1 Core No: 15

Date: September 13, 1979 T.D. 16,959'

Interval Cored: 16,929'-16,959' Formation: Echooka

Recovery: 21' Core Diameter: 2 5/8" Inches

GENERALIZED CORE DESCRIPTION: _____



DETAILED CORE DESCRIPTION

Prepared By Dave Fenex

16,950'-16,959 (9') Not recovered.



CONVENTIONAL CORE DESCRIPTION FORM

Page 1 of 1

Well: TUNALIK No. 1 Core No: 16

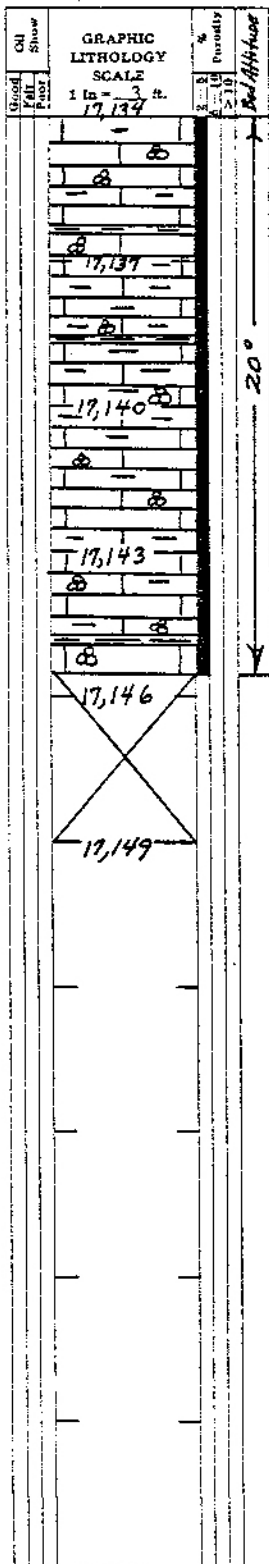
Date: 9/19/79 T.D. 17,149'

Interval Cored: 17,134'-17,149 Formation: Lisburne

Recovery: 11.5' Core Diameter: 2 1/2 Inches

GENERALIZED CORE DESCRIPTION:

* 16



DETAILED CORE DESCRIPTION

Prepared By G.W. Legg

17,134'-17,137 (3.0') Ls: gy., mottled with translucent sparry calcite, very fine crystalline to fine crystalline, moderately fossiliferous with numerous pelecypod and one observed brachiopod, all replaced by calcite, moderately argillaceous, very well indurated, dense, siliceous in part with partial chert-like matrix, nil visible porosity, occasional shaly partings 1/2" to 2" with approximate 20 degree dip.

17,137'-17,141 (4.0') Limestone: dark gray, very argillaceous - grading to calcareous shale; microcrystalline to very fine crystalline, hard and dense, less siliceous than above, moderately fossiliferous with brachiopods and pelecypods replaced by calcite, nil porosity; bedding as evidenced by partings approximately 20 degrees.

17,141'-17,145.5 (4.5') Limestone: gray, occasionally mottled with translucent sparry calcite, moderately argillaceous, occasionally very argillaceous, very fine crystalline to fine crystalline, occasional medium crystalline, slight to moderate fossiliferous as above with fossils replaced by calcite, hard and dense, slightly more siliceous than above, nil porosity, occasional shaly partings as above.

17,145.5'-17,149 (3.5') No Recovery



HUSKY OIL NPR OPERATIONS, INC.
U.S. GEOLOGICAL SURVEY/ONPRA

UN

CONVENTIONAL CORE DESCRIPTION FORM

Page 1 of 4

Well: TUNALIK No. 1 Core No: 17
 Date: 9/24/79 T.D. 17,286'
 Interval Cored: 17,255'-17,286 Formation: Lisburne
 Recovery: 28' Core Diameter: 2 1/4 Inches

R17

GENERALIZED CORE DESCRIPTION: Shale: light gray, silty, calcareous in part,
siliceous to very siliceous-grading to quartzite in part.

Depth (ft.)	Oil Show	Graphic Lithology Scale	* Porosity
17,255		17,255	
17,256		17,256	
17,257		17,257	
17,258		17,258	
17,259		17,259	
17,260		17,260	
17,261		17,261	
17,262		17,262	
17,263		17,263	
17,264		17,264	
17,265		17,265	

DETAILED CORE DESCRIPTION

Prepared By G.W. Legg

17,255'-17,269 (14.0') Shale: light gray, silty-grading to siltstone, generally very siliceous, non-calcareous, subfissile, apparently non-micaceous, quartzitic in part with some very fine grained to silt-size quartz grains-breaks across grains.



HUSKY OIL NPR OPERATIONS, INC.
U.S. GEOLOGICAL SURVEY/ONPRA

CONVENTIONAL CORE DESCRIPTION FORM

Page 2 of 4

Well: TUNALIK No. 1 Core No: 17

Date: 9/24/79 T.D. 17,286'

Interval Cored: 17,255'-17,286' Formation: Lisburne

Recovery: 28' Core Diameter: 2 1/2 Inches

GENERALIZED CORE DESCRIPTION: -

Depth Feet	M Show	GRAPHIC LITHOLOGY SCALE	Porosity	
			%	A
17,265		17,265		
17,266		17,266		
17,267		17,267		
17,268		17,268		
17,269		17,269		
17,270		17,270		
17,271		17,271		
17,272		17,272		
17,273		17,273		
17,274		17,274		
17,275		17,275		

DETAILED CORE DESCRIPTION

Prepared By G.W. Legg

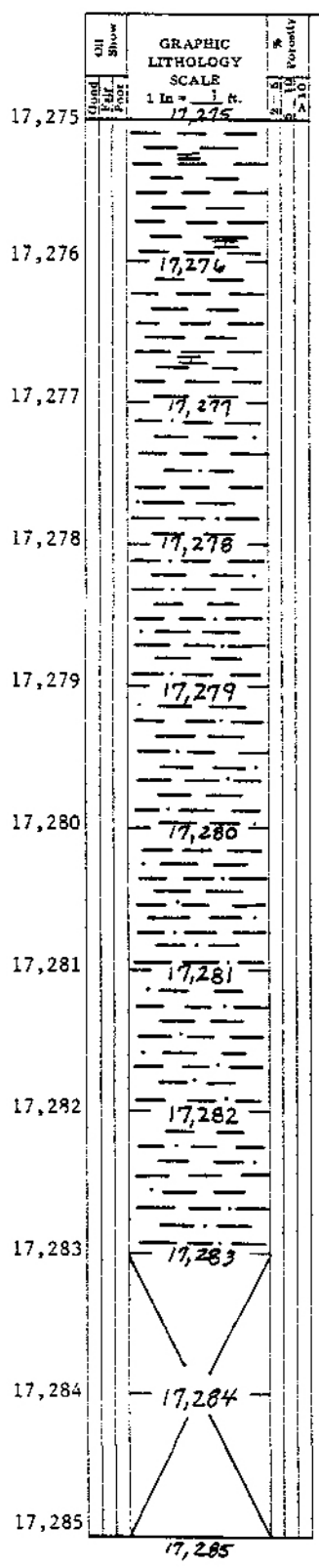
17,269'-17,271' (8.0') Shale: light gray-dark gray, silty as above, but very slightly calcareous in part, more siliceous - becoming essentially quartzite bottom 3 feet with some p-p calcite pods.



HUSKY OIL NPR OPERATIONS, INC.
U.S. GEOLOGICAL SURVEY/ONPRA

CONVENTIONAL CORE DESCRIPTION FORM

Well: TUNALIK No. 1 Core No: 17
 Date: 9/24/79 T.D. 17,286'
 Interval Cored: 17,255'-17,286' Formation: Lisburne
 Recovery: 28' Core Diameter: 2 1/4 Inches
 GENERALIZED CORE DESCRIPTION: -



DETAILED CORE DESCRIPTION

Prepared By G.W. Legg

17,275' - 17,276' (1.0') Shale: light gray to dark gray, silty as above, but non-calcareous, less quartzitic than above, some rough subfissility - no apparent micas.

17,276' - 17,277' (1.0') Shale: light gray to dark gray, silty as above, but non-calcareous, less quartzitic than above, some rough subfissility - no apparent micas.

17,277' - 17,281' (4.0') Shale: light gray to dark gray, silty as above, but non-calcareous, less quartzitic than above, some rough subfissility - no apparent micas.

17,281' - 17,283' (2.0') Shale: becoming very quartzitic - breaks with subconchoidal fracture - breaks across silty quartz grains.

17,283' - 17,286' (3.0') No Recovery



CONVENTIONAL CORE DESCRIPTION FORM

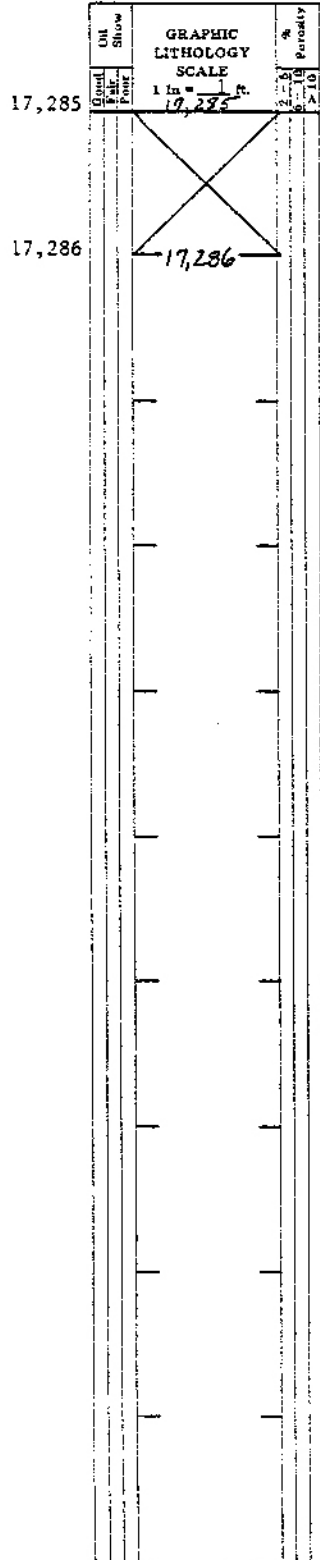
Well: TUNALIK No. 1 Core No: 17

Date: 9/24/79 T.D. 17,286'

Interval Cored: 17,255'-17,286' Formation: Lisburne

Recovery: 28' Core Diameter: 2 1/2 Inches

GENERALIZED CORE DESCRIPTION: -



DETAILED CORE DESCRIPTION

Prepared By G.W. Legg

Blank area for detailed core description with horizontal lines.