



UNITED STATES
DEPARTMENT OF THE INTERIOR
GEOLOGICAL SURVEY

Office of National Petroleum Reserve in Alaska
345 Middlefield Road
Menlo Park, California 94025

April 15, 1980

Memorandum

To: Distribution

From: Roger J. Witmer, ONPRA

Subject: Lisburne Test Well No. 1 lithology study

ONPRA requested Anderson, Warren, and Associates to study and report on the lithologies of the three repeated sections in Lisburne Test Well No. 1 from depths 6760 ft. to 13,370 ft. Attached is a copy of the preliminary report for your use. Eleven lithologic units (A - K) have been delineated by Mike Mickey. Appendix Charts 1 - 3 list the approximate percentages of lithology types, as well as observed minerals, microfossil groups, etc., of the ditch samples. Appendix Figures 1 - 3 illustrate the lithologic units, including general descriptions and suggested paleoenvironments, plotted on the electric logs.


R. J. Witmer

Attachments

Distribution:

Gryc	Adkinson
Bowsher	Bird
Carter	Forester
Kienzle	Hewitt
Kirschner	Payne
Tailleur	Tetra-Tech

NOTED

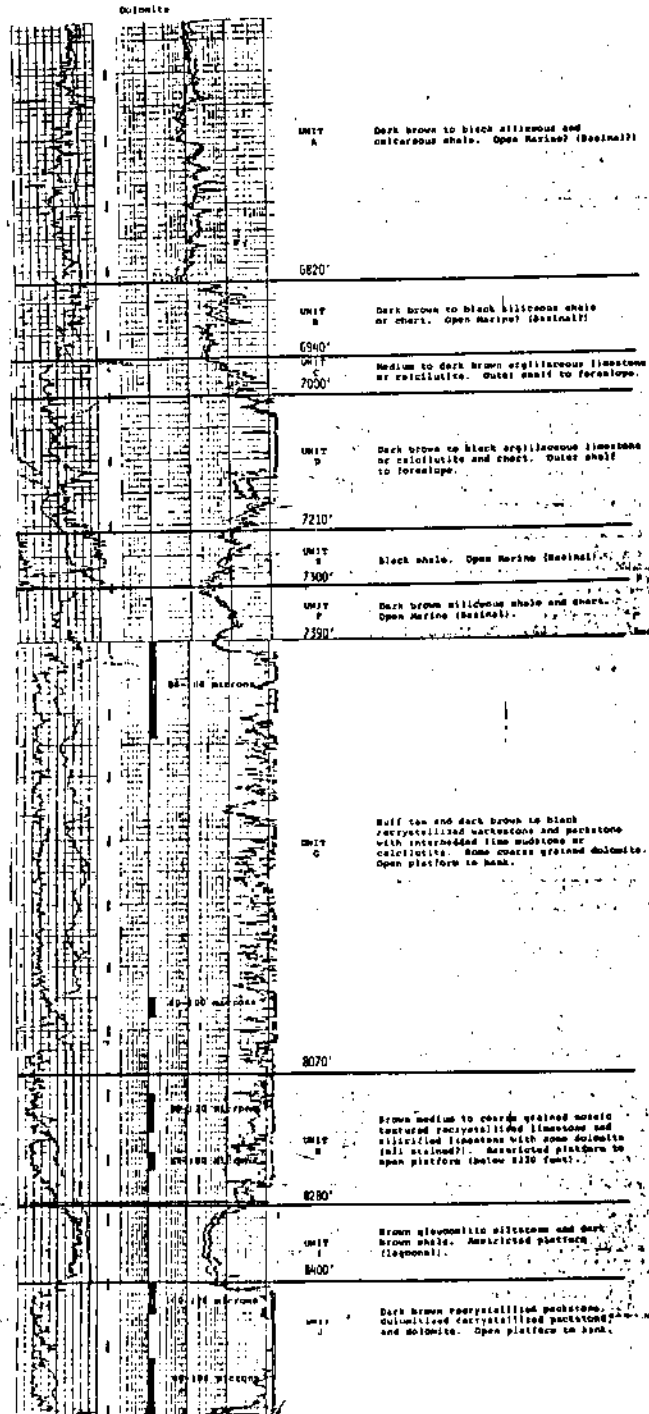
APR 17 1980

CRYC

HUSKY/USGS
 LISBARGE #1
 Sec. 17, 115/16W U.N.M.
 North Slope, Alaska

PLATE 1

VERTICAL SCALE 1" = 100'



DATA PREPARED BY:
 ANDERSON, WARREN & ASSOCIATES, INC.
 11526 SORRENTO VALLEY ROAD, SUITE 6
 SAN DIEGO, CALIFORNIA 92121

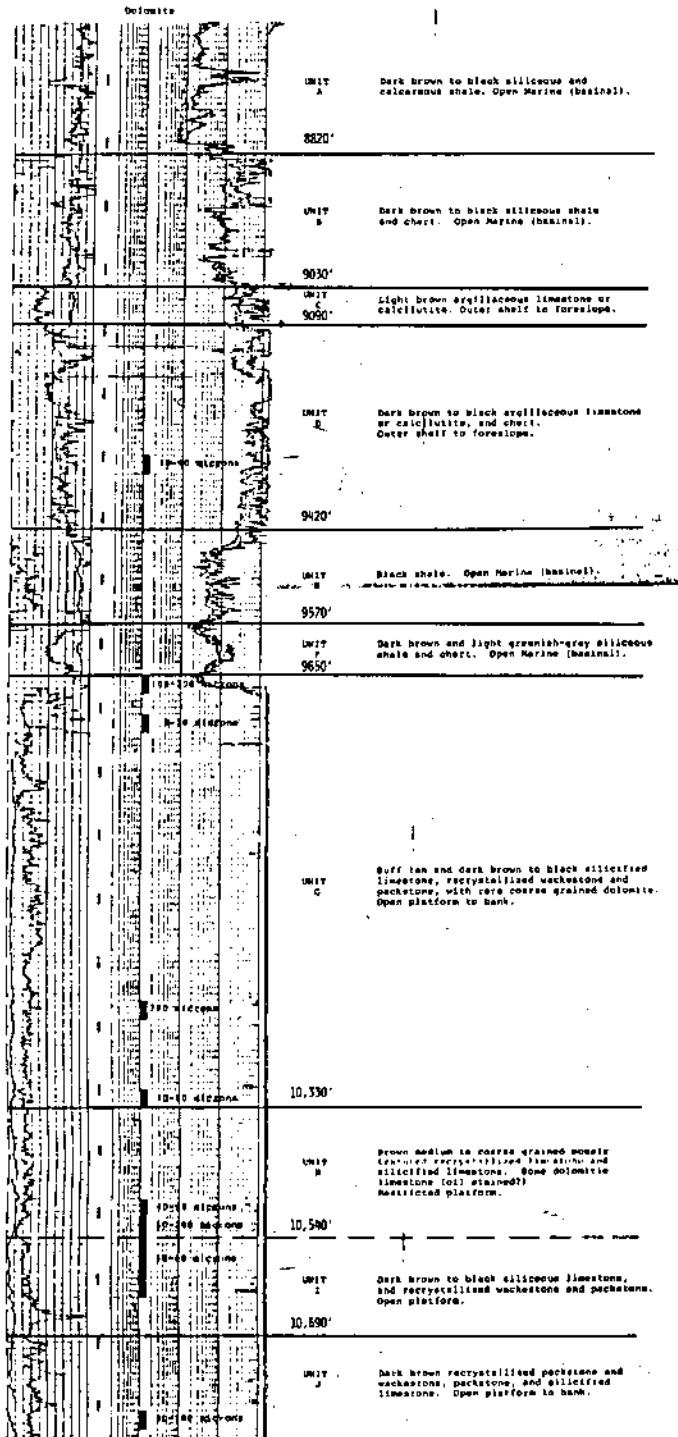
APPENDIX FIGURE 2

MSKY/USGS

LISBURN #1
 Sec. 17, 115/15W U.B.M.
 NORTH SLOPE, ALASKA

PLATE 2

VERTICAL SCALE 1" = 100'



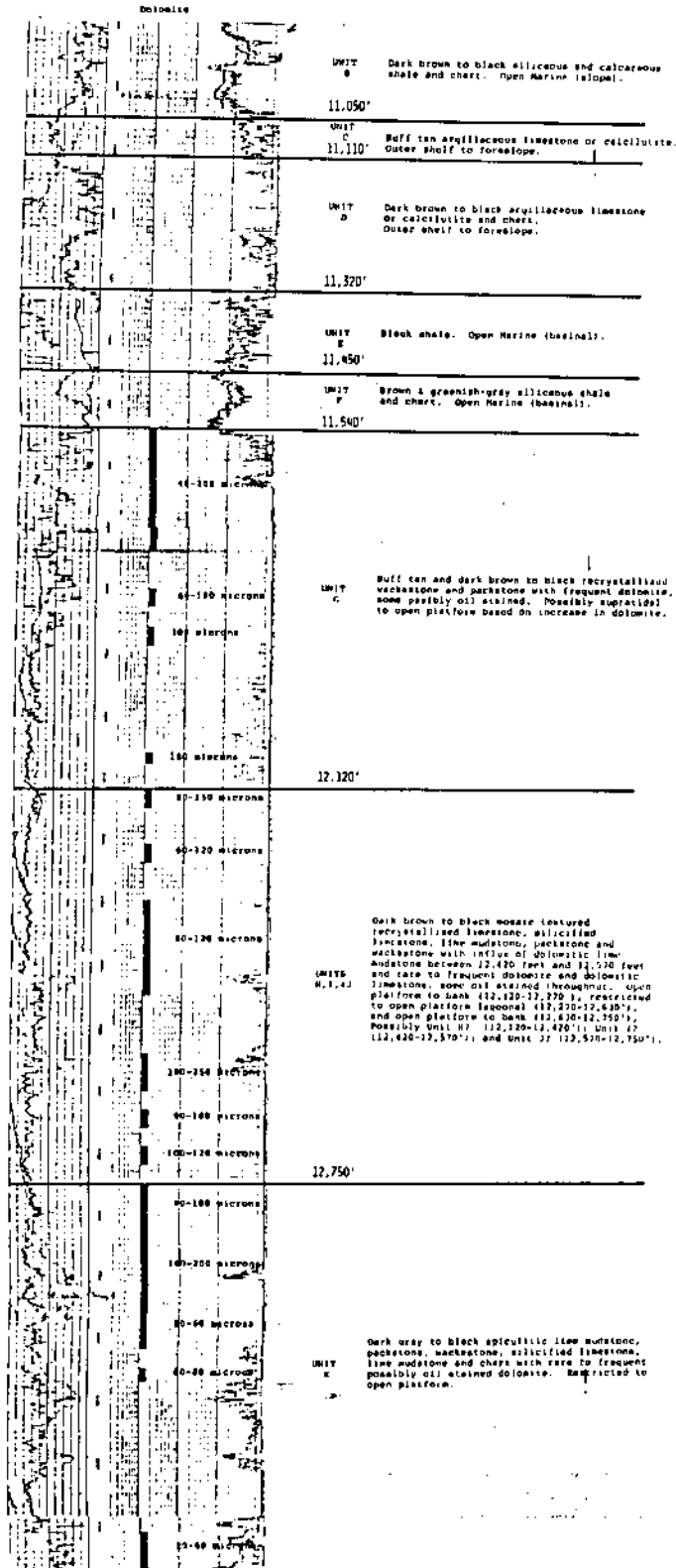
DATA PREPARED BY:
 ANDERSON, WARREN & ASSOCIATES, INC.
 11526 SORRENTO VALLEY ROAD, SUITE 6
 SAN DIEGO, CALIFORNIA 92121

HUSKY/USGS
 LISBURGH #1
 SEC. 17, 115/16W U.S.M.
 NORTH SLOPE, ALASKA

APPENDIX FIGURE 3

PLATE 5

VERTICAL SCALE 1" = 100'



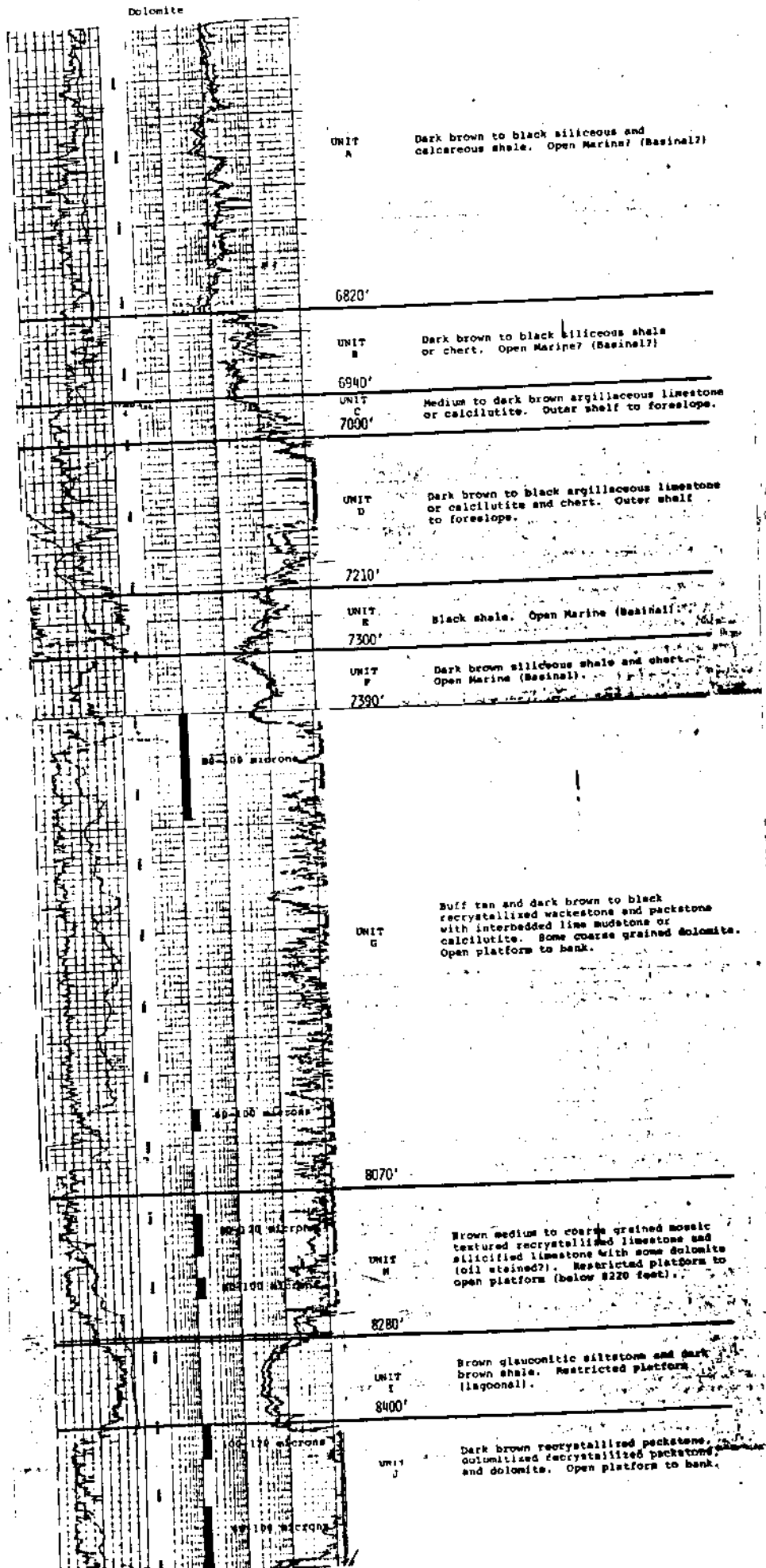
DATA PREPARED BY:
 ANDERSON, WARREN & ASSOCIATES, INC.

HUSKY/USGS

LISBURNE #1
 SEC. 17, 11S/16W U.B.H.
 NORTH SLOPE, ALASKA

PLATE 1

VERTICAL SCALE 1" = 100'



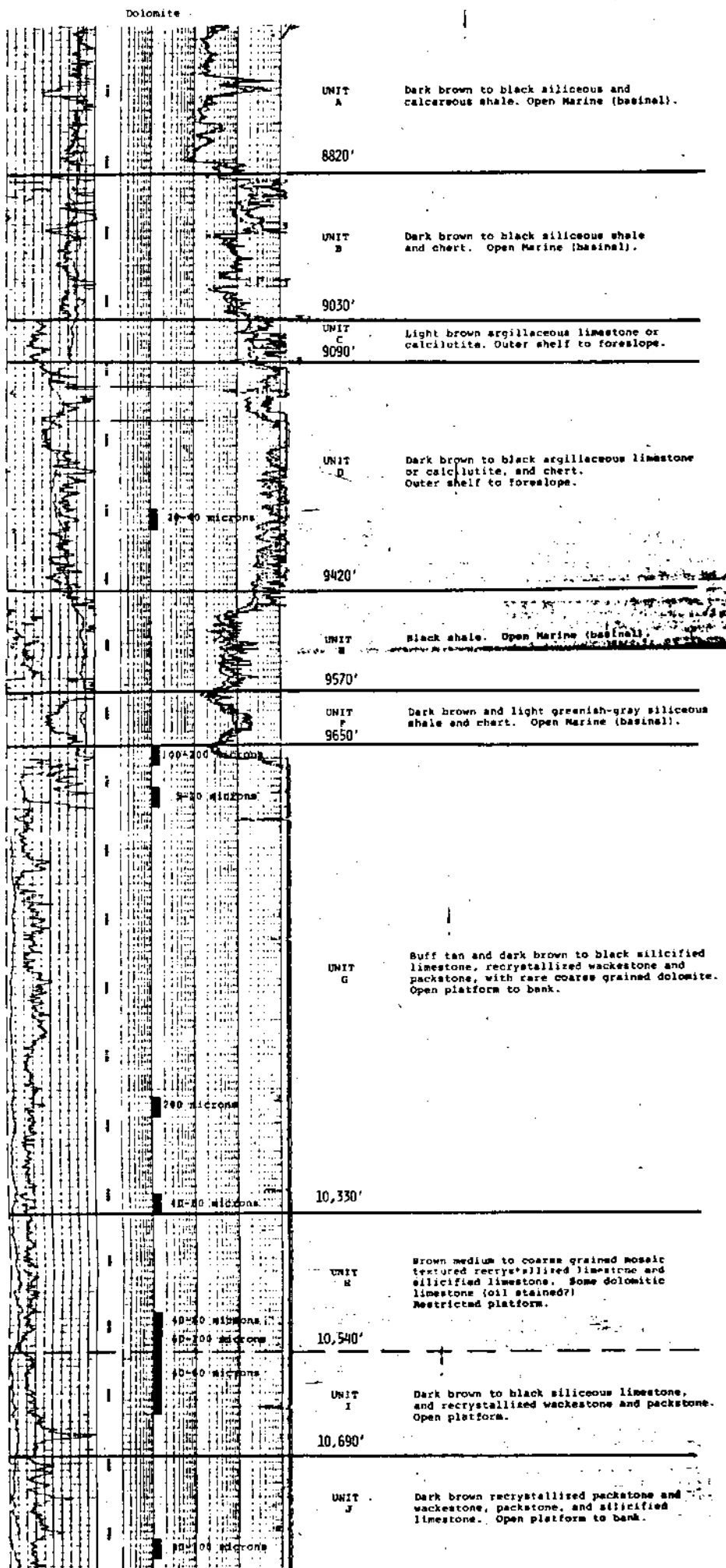
DATA PREPARED BY:
 ANDERSON, HARREN & ASSOCIATES, INC.
 11526 SORRENTO VALLEY ROAD, SUITE 6
 SAN DIEGO, CALIFORNIA 92121

HUSKY/USGS

LISBURNE #1
 Sec. 17, 11S/16W U.B.M.
 NORTH SLOPE, ALASKA

PLATE 2

VERTICAL SCALE 1" = 100'



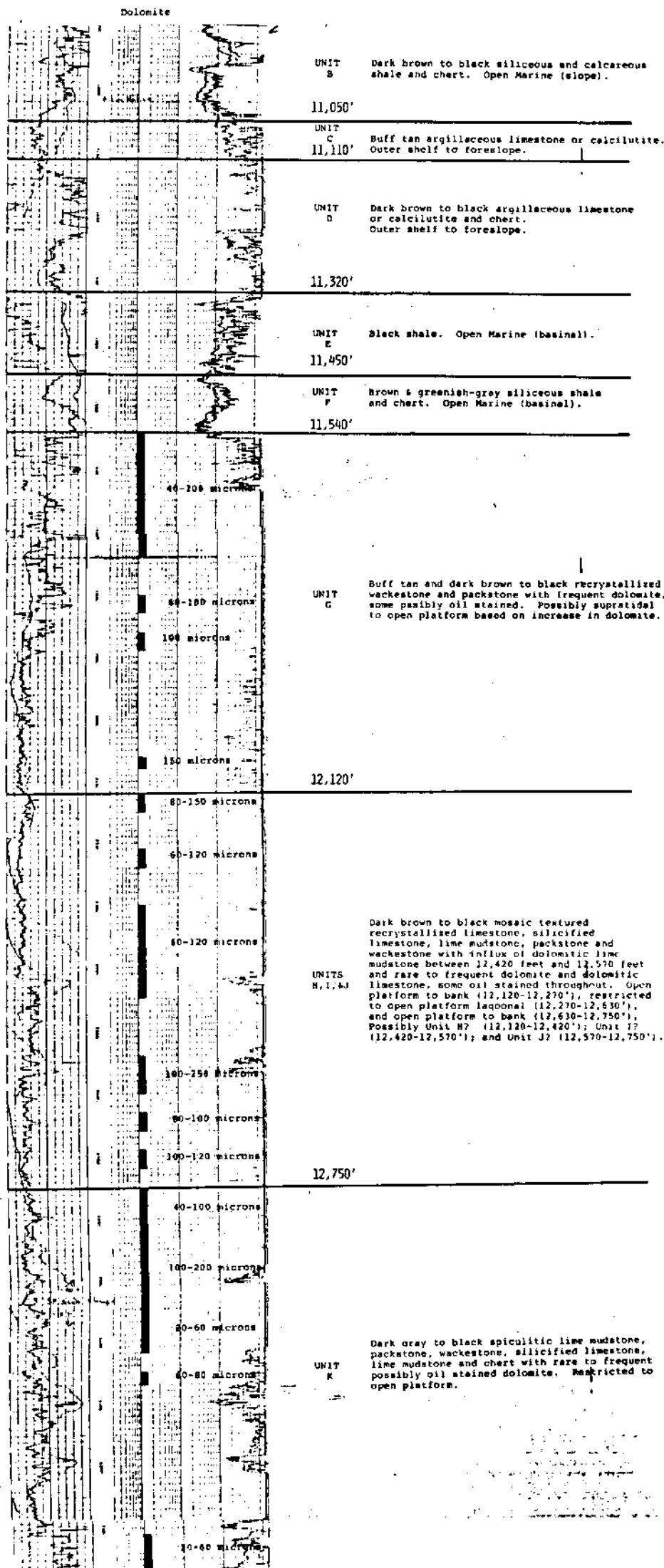
DATA PREPARED BY:
 ANDERSON, WARREN & ASSOCIATES, INC.
 11526 SORRENTO VALLEY ROAD, SUITE G
 CULVER CITY, CALIFORNIA 90231

HUSKY/USGS

LISBURN #1
 SEC. 17, 11S/16W U.B.M.
 NORTH SLOPE, ALASKA

PLATE 3

VERTICAL SCALE 1" = 100'



DATA PREPARED BY:
 ANDERSON, WARREN & ASSOCIATES, INC.
 11526 SORRENTO VALLEY ROAD, SUITE 6
 SAN DIEGO, CALIFORNIA 92121