



HUSKY OIL NPR OPERATIONS, INC.
U.S. GEOLOGICAL SURVEY/ONPRA

CONVENTIONAL CORE DESCRIPTION FORM

Page 1 of 1

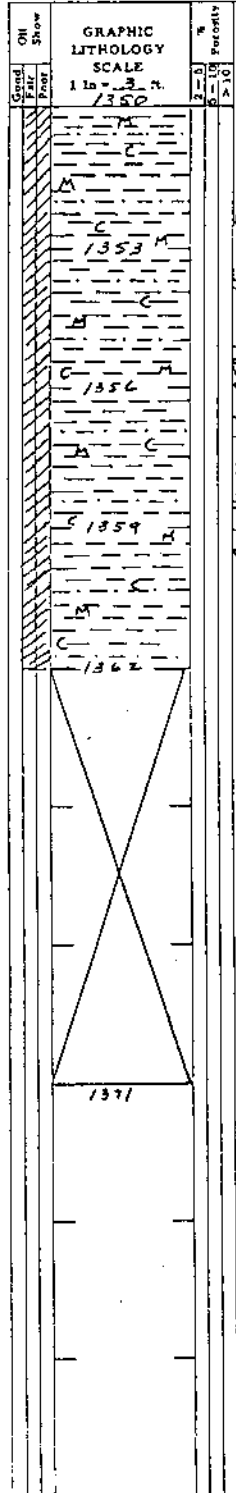
Well: 11565/Husky - S Barrow #1B Core No: 1

Date: 9/25/80 T.D. 1371

Interval Cored: 1350-1371 Formation: Tarak

Recovery: 12' 57% Core Diameter: 4" Inches

GENERALIZED CORE DESCRIPTION: Sh. 4/8 thin siltst. ptg & lam
Horizontal bedding, 85° frac thru out core



DETAILED CORE DESCRIPTION

Prepared By R. Brockway

1350-1362
Sh. grey-brown, fine flky (Petrochips) mic. mica, carb. blk, 4/8
very thin bed siltst. ptg & lam. Bedding horiz.
Grad. grassy odor thru out, wet, water looking, silty
bedding, plastic and acc. on face. 1/8 bl. yel. clay, inst. 1/8 blue
yel. cut. acc. chips have bluish-grey when slightly heated.
Siltstone ptg & lam have bl. yel. clay. inst. 1/8 yel. cut. app. 1/8
silt.

NOTED

OCT 9 1980

RVO

1362-1371
no Returns

Core bbl jammed

RECEIVED

OCT 8 1980

ONPRA
MENLO PARK



HUSKY OIL NPR OPERATIONS, INC.
U.S. GEOLOGICAL SURVEY/ONPRA

CONVENTIONAL CORE DESCRIPTION FORM

Page 1 of 1

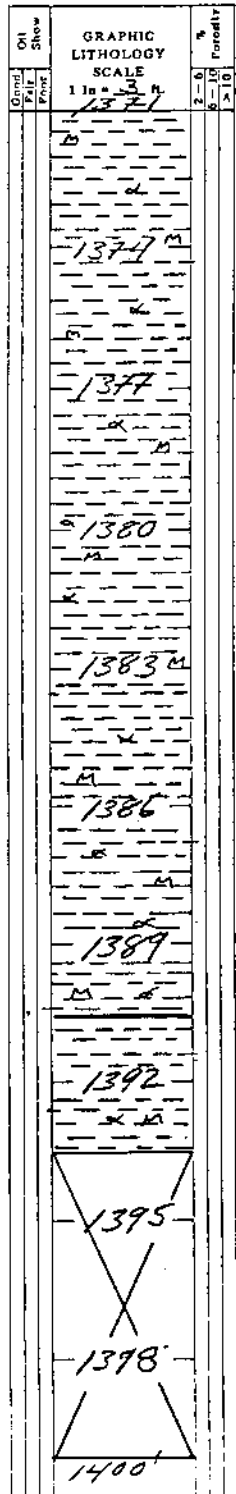
Well: LISGS/HUSKY ONPRA Core No: 2 (TWO)

Date: 9/26/80 T.D. 1400

Interval Cored: 1371-1400 (Core bbl Jammed, 1400') Formation: Rebble Sh

Recovery: 22 1/2 feet (78%) Core Diameter: 4" Inches

GENERALIZED CORE DESCRIPTION: Sh; dk brn-gy, fis, fish fragments common.



Geochron sps

DETAILED CORE DESCRIPTION

Prepared By Ron Brockway

1371-1393.5'; Sh, dk brn-gy, fis, fish, microporac
Def. dis. var. X and L, var. incl. fish frags
com. occ. in fis frag, thin early pt. @ 1371.5; core
is highly frag and shattered, w/ hydrocarbon seep
1372.5; dip approx 5° @ 1388.5-1391.5.

1393.5-1400' NO RECOVERY

RECEIVED
OCT 8 1980
ONPRA
MENLO PARK