

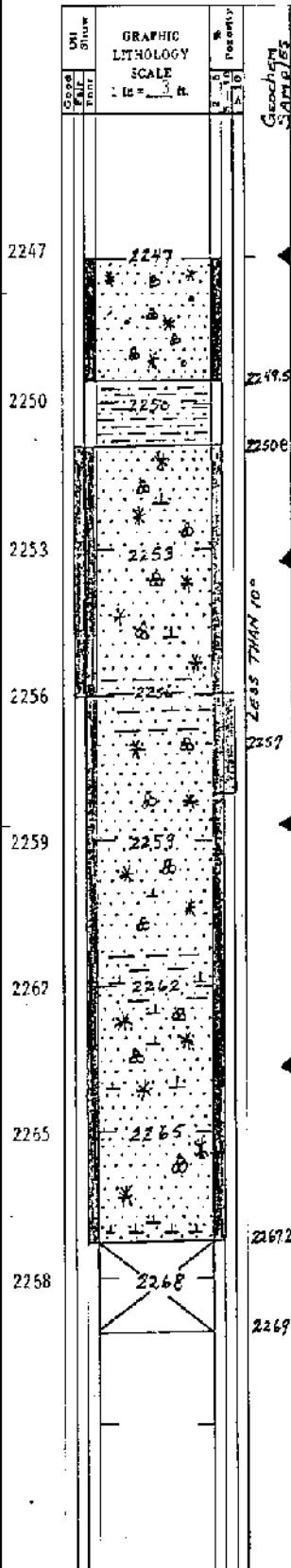


CONVENTIONAL CORE DESCRIPTION FORM

Well: SOUTH BARRCW No. 20 Core No: 1  
Date: April 19, 1980 T.D. 2269'  
Interval Cored: 2247'-2269' Formation: Sag River  
Recovery: 20.2' (92%) Core Diameter: 2 3/8 Inches

GENERALIZED CORE DESCRIPTION: Glauconitic Sandstone, calcareous, dirty, tight, bleeding heavy brown oil throughout.

47



DETAILED CORE DESCRIPTION  
Prepared By R.V. Nelson, Jr.

2247'-2249.5' Sandstone, very fine grained, moderately argillaceous, hard, rich grading occasionally to siltstone; poorly sorted, bleeding dark brown oil, heavy with poor initial flow.

2249.5'-2250.8' Siltstone, medium gray, argillaceous, sandy, tight, firm, clayey, finely cross laminated.

2250.8'-2256.3' Sandstone, medium gray to green, ~~medium grained~~ clay filled, ~~medium grained~~ glauconitic, lightly calcareous.

Strong odor, bleeding dark brown oil, very dull gold fluorescence, bright yellow-green cut fluorescence.

Becoming green, very glauconitic with shell material common, chert and quartz granules.

With occasional irregular shale and siltstone laminations. Medium grained, glauconitic, shells.

Sandstone, green, very fine grained, clearer.

Sandstone, green, very fine grained, glauconitic, ~~poor permeability and porosity~~ shale filled w/ minor laminations of silt and shale; shell material common.

Strong odor, bleeding heavy oil.

Very calcareous, firm to hard.

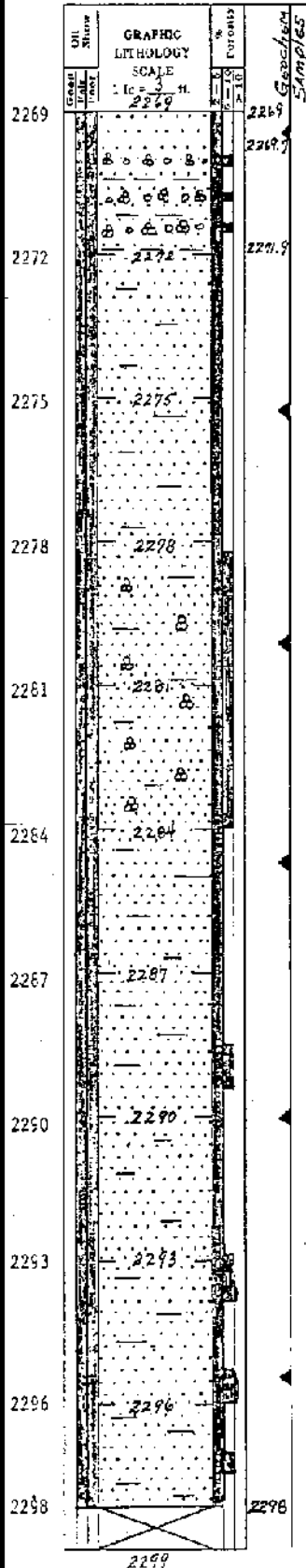
Coarse zone with shells and siliceous granules, very glauconitic.

Very limsy, more pelleral, hard.

2262.2'-2269. No Recovery.

Well: SOUTH BARROW No. 20 Core No: 2  
 Date: April 29, 1980 T.D. 2299'  
 Interval Cored: 2269'-2299' Formation: Sag River  
 Recovery: 29' (97%) Core Diameter: 2 3/8 Inches

GENERALIZED CORE DESCRIPTION: Sandstone, very fine grained, dirty, hard, mostly low permeability; bleeding brown oil throughout.



DETAILED CORE DESCRIPTION

Prepared By R. V. Nelson, Jr.

2269'-2269.7' Sandstone, medium gray, ~~very fine grained~~ slightly calcareous, ~~hard~~; ~~bleeding brown oil~~.  
 2269.7'-2271.9' Sandstone, medium gray-brown to green, ~~hard~~ with granules and shell hash, hard, with irregular shale laminations; thinly interbedded with very fine sandstone and laminations of medium gray-brown shale, hard to occ. friable in shaly portions; ~~bleeding heavy oil~~.

Sandstone, medium gray to brown, hard, ~~very fine grained~~ lightly calcareous, moderately argillaceous.  
 Generally saturated with ~~heavy oil~~ with very dull fluorescence, bright greenish yellow cut fluorescence.

Slightly argillaceous, ~~fair porous~~, but low permeability, strong odor, ~~bleeding heavy oil~~.

Sandstone, very fine grained, slightly argillaceous, slightly calcareous, hard, with irregular shale laminations.  
 Smells like a mixture of gasoline and diesel.

Sandstone, medium gray brown, ~~fine grained~~, slightly argillaceous with shale laminations, glauconitic, slightly calcareous, occasional shell fragments.

Slightly finer and siltier, tight, bleeding from pores and fractures.

Sandstone, very fine grained.



CONVENTIONAL CORE DESCRIPTION FORM

Well: SOUTH BARROW No. 20 Core No: 3

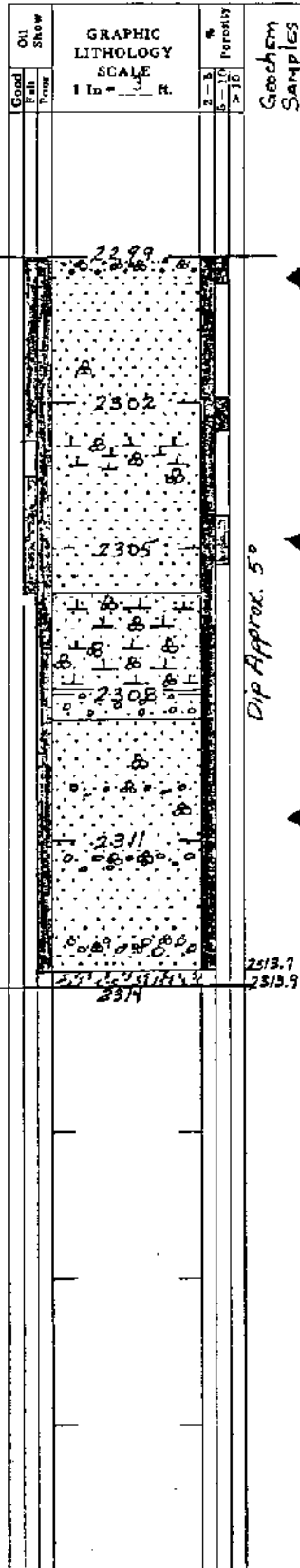
Date: April 20, 1980 T.D. 2314'

Interval Cored: 2299'-2314' Formation: Sag River

Recovery: 14.9' Core Diameter: 2 3/8 Inches

GENERALIZED CORE DESCRIPTION: Hard tight glauconitic sandstone with heavy oil shows; and 0.2 feet of the basement contact.

M



DETAILED CORE DESCRIPTION

Prepared By R.V. Nelson, Jr.

2299'-2299.5' Sandstone, green to brown, coarse, abundant shell fragments, calcareous; ~~bleeding heavy oil~~, dead fluorescence.

Sandstone, medium gray brown to green, very fine with laminations of fine, lightly calcareous, moderately to slightly argillaceous.

Hard cemented zone, abundant brachiopods; ~~heavy oil~~, ~~bleeding heavy oil~~, ~~bleeding heavy oil~~, saturated with heavy oil.

~~oil~~ - strong odor, dark brown, bleeding, heavy with very dead initial fluorescence.

Sandstone, medium brown to green, very fine grained, hard, very calcareous, shells and fragments common; ~~bleeding heavy oil~~ heavy brown ~~oil~~ from pores and fractures.

2307.9'-08.3' Coarse sand and granules, hard cemented, calcareous, tight.

Sandstone, medium gray, very fine grained, calcareous cement, slightly argillaceous; low permeability.

Occasional laminations of coarse sand and shell material.

Shell hash and small pebbles; ~~bleeding heavy oil~~.

2313.7' Argillite, 1/2" of bright green at contact and then 2" (two inches) of typical dark gray, hard, micaceous; dipping at approximately 45°.