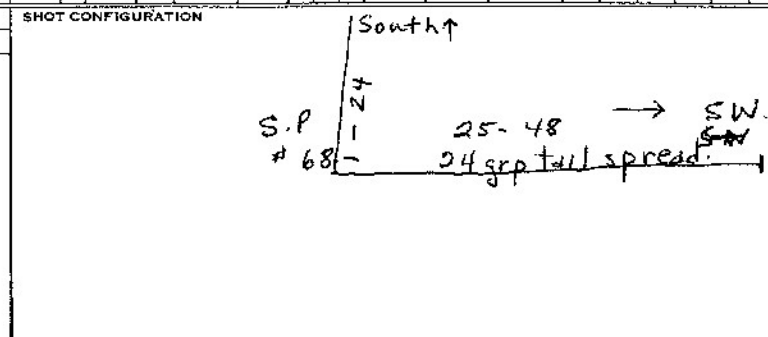


CLIENT		PARTY NO.	PROSPECT	COUNTY	STATE	COUNTRY	LEFT STORAGE	ARRIVED FIELD	LEFT FIELD	ARRIVED STORAGE	DATE	OBSERVER	PAGE																					
U.S. NAVY		182	N. P. R. 4		ALASKA	U.S.A.	7 <sup>00</sup>	8 <sup>00</sup>	5 <sup>00</sup>	6 <sup>00</sup>	5-7-75	E. Carlsenius	109																					
LINE	PROFILE	REEL NUMBER	FILE NUMBER	SHOT CAL	PLAY BACK	TIME	SHOT		NO CAPS	CODE	S.P. OFFSET	NO. 1 DIR.	CODE	SPREAD		CDP SWITCH	SETUP	TAPE			GAIN					INITIAL GAIN (DB)	PHYSICAL GAIN (DB)	RELEASE RATE	TRIP DELAY	HIGH CUT FREQ.	FILTERS		NOTCH	REMARKS
							SIZE	TOP BOT.						SAMPLE RATE MS	RECORD LENGTH			PARITY ERRORS	MODE	1-4/24	5-8	9-12	13-16	17-20	21-24						LOW CUT FREQ.	FREQ.		

SEISMOMETER AND SPREAD INFORMATION						
CODE	SEIS. TYPE	NO./GP.	INT.	GROUP PATTERN	GP. INT.	SPREAD PATTERN



DFS III SYSTEM PARAMETERS:

GAIN CONSTANT \_\_\_\_\_ DB

UPPER SET LIMIT \_\_\_\_\_ %

LOWER SET LIMIT \_\_\_\_\_ %

FORMAT TYPE:

9 TRACK  21 TRACK

GALVO LEVEL:

1-24 \_\_\_\_\_ DB AUX \_\_\_\_\_ DB

OTHER:

MISCELLANEOUS INFORMATION:

Traces 1 to 12 = 9/string grouped.

13 to 24 = Pressure phones

25 to 48 = Normal spread.

shots # 1-5 = 1-24 were 20'a part.

shots # 6 - 21-24 were 60'a part.

NO. CHANGES

EXPERIMENTAL PROGRAM.

60's passing 1-12 = pressure phones. 13-24 = 9/string group.

Pickup and layout Moved to Line #32.

44 grp #24 offset 165'SE. Read file counter.

Caught up to drill.

CLIENT <i>U.S. NAVY</i>	PARTY NO. <i>1B2</i>	PROSPECT <i>N.P.R. 4</i>	COUNTY	STATE <i>ALASKA</i>	COUNTRY <i>U.S.A.</i>	LEFT STORAGE	ARRIVED FIELD	LEFT FIELD	ARRIVED STORAGE	DATE <i>5-10-75</i>	OBSERVER <i>F. Carlsenius</i>	PAGE <i>10P1</i>
----------------------------	-------------------------	-----------------------------	--------	------------------------	--------------------------	--------------	---------------	------------	-----------------	------------------------	----------------------------------	---------------------

LINE	PROFILE	IDENTIFICATION		SHOT		SPREAD								TAPE			GAIN					FILTERS		REMARKS							
		REEL NUMBER	FILE NUMBER	PLAY BACK	TIME	SIZE	NO CAPS	CODE	S.P. OFFSET	NO. 1 DIR.	CODE	S.P. OFFSET	SEIS DEPTH	CDP SWITCH	SETUP	SAMPLE RATE MS	RECORD LENGTH	PARITY ERRORS	MODE	INITIAL GAIN (DB)					FINAL GAIN DB	RELEASE RATE	TRIP DELAY	HIGH CUT FREQ.	LOW CUT FREQ.	SLOPE	NOTCH IN/OUT
		CAL.			TOP BOT.											1-4/24	5-8	0-12	13-16	17-20	21-24										
																															<i>10 hours stand-by. Wait on drills</i>
																															<i>DID NOT GO TO FIELD.</i>

SEISMOMETER AND SPREAD INFORMATION						
CODE	SEIS. TYPE	NO./GP.	INT.	GROUP PATTERN	GP. INT.	SPREAD PATTERN

SHOT CONFIGURATION	

DFS III SYSTEM PARAMETERS:

GAIN CONSTANT \_\_\_\_\_ DB

UPPER SET LIMIT \_\_\_\_\_ %

LOWER SET LIMIT \_\_\_\_\_ %

FORMAT TYPE:

9 TRACK  21 TRACK

GALVO LEVEL:

1-24 \_\_\_\_\_ DB AUX \_\_\_\_\_ DB

OTHER:

MISCELLANEOUS INFORMATION:

CLIENT		PARTY NO.		PROSPECT		COUNTY		STATE		COUNTRY		LEFT STORAGE		ARRIVED FIELD		LEFT FIELD		ARRIVED STORAGE		DATE		OBSERVER		PAGE															
U.S. NAVY		182		N.P.R. 4				ALASKA		U.S.A.		7 <sup>00</sup>		8 <sup>00</sup>						5-9-75		F. Carlsenius		1072															
IDENTIFICATION				SHOT				SPREAD				TAPE				GAIN						FILTERS			REMARKS														
LINE	PROFILE	REEL NUMBER	FILE NUMBER	SHOT CAL	PLAY BACK	TIME	SIZE	TOP		NO CAPS	CODE	S.P. OFFSET	NO. 1 DIR.	CODE	S. SEIS. OFFSET	S. SEIS. DEPTH	C.D.P. SWITCH	SETUP	SAMPLE RATE MS				RECORD LENGTH	PARITY ERRORS	MODE	INITIAL GAIN (DB)						FINAL GAIN DB	RELEASE RATE	TRIP DELAY AUTO	HIGH CUT FREQ.	LOW CUT		NOTCH IN/OUT	
								56	70										1	2	4	1-4/24				5-8	9-12	13-16	17-20	21-24	FREQ.					SLOPE			
32	44	698 530	023	1	R/W	9 <sup>13</sup>	1X35	56	70	2					10'	1	1	✓	6			OPERATE	60	60	60	54	54	42	90	Fast	28	124	8	36	cut	11. H. trace on shot #1 10' U.H. trace = P. phone 150' From S.P. 7 1/2' below ice surface.			
	45		024	2			1X35	56	70	2					"	5		✓	"			"	42	54	54	60	60	60	"	"	"	"	"	"	"	"			
	46		025	3			1X35	56	70	2					"	9		✓	"			"							"	"	"	"	"	"	"	"			
	47		026	4			1X35	56	70	2					"	13		✓	"			"							"	"	"	"	"	"	"	"			
	48		027	5			1X35	56	70	2					"	17		✓	"			"							"	"	"	"	"	"	"	"			
	49		030	6			1X35	56	70	2					"	21		✓	"			"							"	"	"	"	"	"	"	"	Trace #1 = P. phone - 150' @ 8' U.H. trace = P. " - 10' @ 8'		
	50		031	7			1X35	56	70	2					"	25		✓	"			"	54	54	54	54	48	42	"	"	"	"	"	"	"	"			
	51		032	8			1X35	56	70	2					"	29		✓	"			"	42	48	54	54	54	54	"	"	"	"	"	"	"	"			
	52		033	9			1X35	56	70	2					"	33		✓	"			"							"	"	"	"	"	"	"				
	53		034	10			1X35	56	70	2					"	37		✓	"			"							"	"	"	"	"	"	"				
	54	698	035	11			1X35	56	70	2					"	41		✓	"			"							"	"	"	"	"	"	"	"	Trace #1 = P. phone - 150' @ 10' U.H. trace = P. phone - 10' @ 10'		
	55	531	037	12			1X35	56	70	2					"	45		✓	"			"							"	"	"	"	"	"	"	Tape change (698531)			
	56		040	13			1X35	56	70	2					"	49		✓	"			"							"	"	"	"	"	"	"	Moved up to S.P. #63.			
	57		041	14			1X35	56	70	2					"	1	2	✓	"			"	"	"	"	"	"	"	"	"	"	"	"	"	"	#21 open.			
	58		042	15			1X35	56	70	2					"	5		✓	"			"							"	"	"	"	"	"	"	"17"			
	59		043	16			1X35	56	70	2					"	9		✓	"			"							"	"	"	"	"	"	"	Trace #1 = P. phone 150' @ 10' U.H. = P. phone @ 10' @ 6'			
	60		044	17			1X35	56	70	2					"	13		✓	"			"	48	48	48	48	48	42	"	"	"	"	"	"	"	"	Brk wind - <del>at 100' 15'</del> for some string		
	61		045	18			1X35	56	70	2					"	17		✓	"			"	42	44	48	48	48	48	"	"	"	"	"	"	"	"			
	62		046	19			1X50	50	70	2					"	21		✓	"			"							"	"	"	"	"	"	"	"			
	63		047	20			1X50	50	70	2					"	25		✓	"			"							"	"	"	"	"	"	"	"			
	64		050	21			1X50	50	70	2					"	29		✓	"			"							"	"	"	"	"	"	"	"	Trace #1 = P. phone 150' @ 15' U.H. trace = P. " 10' @ 15'		
	65		051	22			1X50	50	70	2					"	33		✓	"			"							"	"	"	"	"	"	"	"	Charge may have come up.		
	66		052	23			1X50	50	70	2					"	37		✓	"			"							"	"	"	"	"	"	"	"			
	67		053	24			1X50	50	70	2					"	41		✓	"			"							"	"	"	"	"	"	"	"			
	68		054	25			1X50	50	70	2					"	45		✓	"			"							"	"	"	"	"	"	"	"			
	69		055	26			1X50	50	70	2					"	49		✓	"			"							"	"	"	"	"	"	"	"	Trace #1 = P. phone 150' @ 20' U.H. trace = P. phone 10' @ 20'		

SEISMOMETER AND SPREAD INFORMATION

CODE	SEIS. TYPE	NO./GP.	INT.	GROUP PATTERN	GP. INT.	SPREAD PATTERN

SHOT CONFIGURATION

SHOT NO.	SHOT TYPE	SHOT DESCRIPTION

DFS III SYSTEM PARAMETERS:

GAIN CONSTANT	30 DB
UPPER SET LIMIT	62.5 %
LOWER SET LIMIT	18 %
FORMAT TYPE:	<input type="checkbox"/> 9 TRACK <input checked="" type="checkbox"/> 21 TRACK
GALVO LEVEL:	1-24 21' DB AUX 21' DB
OTHER:	

MISCELLANEOUS INFORMATION:

File # 011 - 020 = D.R.D.  
 File # 021 = Pulse test  
 File # 022 = Test T.B.  
 File # 036 = 10 seconds w/ones  
 Tape # 698531.

RECORDER FIELD DATA TI-13236-A

CLIENT		PARTY NO.		PROSPECT		COUNTY		STATE		COUNTRY		LEFT STORAGE		ARRIVED FIELD		LEFT FIELD		ARRIVED STORAGE		DATE		OBSERVER												
U.S. NAVY		182		N.P.R.-4																5-9-75		F. Carlennis												
LINE	PROFILE	IDENTIFICATION		SHOT ✓ CAL.	PLAY BACK	TIME	SHOT			SPREAD				TAPE			GAIN								FILTERS		REMARKS							
		REEL NUMBER	FILE NUMBER				SIZE	TOP BOT.	NO CAPS	CODE	S.P. OFFSET	NO. 1 DIR.	CODE	S.P. SEIS OFFSET	SEIS DEPTH	CDP SWITCH	SETUP	SAMPLE RATE MS	RECORD LENGTH	PARITY ERRORS	MODE	INITIAL GAIN (DB)						FINAL GAIN DB	RELEASE RATE	TRIP DELAY Auto	HIGH CUT FREQ.	LOW CUT FREQ.	SLOPE	NOTCH IN OUT
32	70	698 531	056	27	R W		1X50	50	70	2																								Moved up to S.P. # 66.
	71		057	28		4:30	1X50	50	70	2																							No T.B.	
	72		060	29			1X50	50	70	2																								

SEISMOMETER AND SPREAD INFORMATION

CODE	SEIS. TYPE	NO./GP.	INT.	GROUP PATTERN	GP. INT.	SPREAD PATTERN

SHOT CONFIGURATION

SHOT CONFIGURATION	

DFS III SYSTEM PARAMETERS:

GAIN CONSTANT \_\_\_\_\_ DB  
 UPPER SET LIMIT \_\_\_\_\_ %  
 LOWER SET LIMIT \_\_\_\_\_ %  
 FORMAT TYPE:  
 9 TRACK  21 TRACK  
 GALVO LEVEL:  
 1-24 \_\_\_\_\_ DB AUX \_\_\_\_\_ DB  
 OTHER:

MISCELLANEOUS INFORMATION:

MISCELLANEOUS INFORMATION:

CLIENT		PARTY NO.		PROSPECT		COUNTY		STATE		COUNTRY		LEFT STORAGE		ARRIVED FIELD		LEFT FIELD		ARRIVED STORAGE		DATE		OBSERVER		PAGE											
U.S. NAVY		182		NPR-4				ALASKA		U.S.A.								5-8-75		F. Carenius		10/1													
LINE	PROFILE	IDENTIFICATION		SHOT CAL.	PLAY BACK	TIME	SIZE	SHOT		NO CAPS	CODE	S.P. OFFSET	NO. 1 DIR.	CODE	SPREAD				TAPE			GAIN						FILTERS		REMARKS					
		FILE NUMBER	REEL NUMBER					TOP BOT.	S.P. SEIS. OFFSET						SEIS. DEPTH	CDP SWITCH	SETUP	SAMPLE RATE MS	RECORD LENGTH	PARITY ERRORS	MODE	INITIAL GAIN (DB)						FINAL GAIN DB	RELEASE RATE		TRIP DELAY	HIGH CUT FREQ.	LOW CUT		NOTCH IN OUT
																						1	2	4	1-4/24	5-6	9-12						13-16	17-20	
																										<p>DID NOT GO TO FIELD WAIT ON DRILLS.</p> <p>CREW WORKED ON EQUIPMENT.</p> <p>ALL GEO-PHONES WERE PUT THROUGH SHAKE TABLE TEST.</p> <p>ALL BAD ELEMENTS WERE REPLACED. ALL STRINGS REPAIRED.</p> <p><u>10 HOURS.</u></p>									

SEISMOMETER AND SPREAD INFORMATION

CODE	SEIS. TYPE	NO./GP.	INT.	GROUP PATTERN	GP. INT.	SPREAD PATTERN

SHOT CONFIGURATION

--

DFS III SYSTEM PARAMETERS:

GAIN CONSTANT \_\_\_\_\_ DB  
 UPPER SET LIMIT \_\_\_\_\_ %  
 LOWER SET LIMIT \_\_\_\_\_ %  
 FORMAT TYPE:  
 9 TRACK     21 TRACK  
 GALVO LEVEL:  
 1-24 \_\_\_\_\_ DB    AUX \_\_\_\_\_ DB  
 OTHER:

MISCELLANEOUS INFORMATION:

--

CLIENT	PARTY NO.	PROSPECT	COUNTY	STATE	COUNTRY	LEFT STORAGE	ARRIVED FIELD	LEFT FIELD	ARRIVED STORAGE	DATE	OBSERVER	PAGE
U.S. NAVY	182	N.P.R. 4		ALASKA	U.S.A.					5-11-75	F. Carlssonius	1 of 1

IDENTIFICATION				SHOT		SPREAD				TAPE		GAIN					FILTERS		REMARKS									
LINE	PROFILE	REEL NUMBER	FILE NUMBER	PLAY BACK	TIME	NO CAPS	S.P. OFFSET	NO. DIR.	SEIS. OFFSET	DEPTH	CDP SWITCH	SETUP	SAMPLE RATE MS	RECORD LENGTH	PARITY ERRORS	MODE	INITIAL GAIN (DB)					FINAL GAIN DB	RELEASE RATE	TRIP DELAY	HIGH CUT FREQ.	LOW CUT	NOTCH	
																	1-4/24	5-8		9-12	13-16/17-20	21-24				FRER.	SLOPE	IN
																											OUT	
																										Weather Day		
																										10 hours standby.		

SEISMOMETER AND SPREAD INFORMATION							SHOT CONFIGURATION		DFS III SYSTEM PARAMETERS:		MISCELLANEOUS INFORMATION:			
CODE	SEIS. TYPE	NO./GP.	INT.	GROUP PATTERN	GP. INT.	SPREAD PATTERN			GAIN CONSTANT	UPPER SET LIMIT	LOWER SET LIMIT	FORMAT TYPE:		
										%	%	<input type="checkbox"/> 9 TRACK <input type="checkbox"/> 21 TRACK		
									GALVO LEVEL:		DB	AUX	DB	OTHER:

CLIENT U.S. NAVY	PARTY NO. 182	PROSPECT N.P.R.-4	COUNTY	STATE ALASKA	COUNTRY U.S.A.	LEFT STORAGE 7 <sup>00</sup>	ARRIVED FIELD 8 <sup>00</sup>	LEFT FIELD 6 <sup>30</sup>	ARRIVED STORAGE 7 <sup>30</sup>	DATE 5-20-75	OBSERVER F. Carlsonius	PAGE 1 of 2
---------------------	------------------	----------------------	--------	-----------------	-------------------	---------------------------------	----------------------------------	-------------------------------	------------------------------------	-----------------	---------------------------	----------------

LINE	PROFILE	IDENTIFICATION			SHOT CAL	PLAY BACK	TIME	SHOT		NO CAPS	CODE	S.P. OFFSET	SPREAD				TAPE				GAIN						FILTERS			REMARKS					
		REEL NUMBER	FILE NUMBER					SIZE	TOP				BOT	NO. 1 DIR.	CODE	SUB OFFSET	SEIS DEPTH	CDP SWITCH	SETUP	SAMPLE RATE MS	RECORD LENGTH	PARITY ERRORS	MODE	INITIAL GAIN (DB)							FINAL GAIN DB	RELEASE RATE	TRIP DELAY AUTO	HIGH CUT FREQ.	LOW CUT
																	1-4	5-8	9-12	13-16	17-20	21-24	FREQ.		SLOPE	IN	OUT								
32	107	698 536	003	1	R/W		1150	55	75	2		SE	10'	1	49	1	✓	16	DIAPHR	48	48	48	48	42	90	Fast	768	124	8	36	out	Recording crew 2 men short.			
	106		004	2			1150	55	75	2		"	"		45		✓	"	"	42	48	48	48	48	"	"	"	"	"	"	"	"	"		
	105		005	3			1150	55	75	2		"	"		41		✓	"	"						"	"	"	"	"	"	"	"	"		
	104		006	4			1150	55	75	2		"	"		37		✓	"	"						"	"	"	"	"	"	"	"	"		
	103		007	5			1150	60	80	2		"	"		33		✓	"	"						"	"	"	"	"	"	"	"	"		
	102		010	6			1150	55	75	2		"	"		29		✓	"	"						"	"	"	"	"	"	"	"	"	"	
	101		011	7			1150	60	80	2		"	"		25		✓	"	"						"	"	"	"	"	"	"	"	"	"	
	100		012	8			1150	55	75	2		"	"		21		✓	"	"						"	"	"	"	"	"	"	"	"	"	
	99		013	9			1150	60	80	2		"	"		17		✓	"	"						"	"	"	"	"	"	"	"	"	"	
	98		014	10			1150	55	75	2		"	"		13		✓	"	"						"	"	"	"	"	"	"	"	"	"	
	97		015	11			1150	60	80	2		"	"		9		✓	"	"						"	"	"	"	"	"	"	"	"	"	
	96		016	12			1150	60	80	2		"	"		5		✓	"	"						"	"	"	"	"	"	"	"	"	"	
	95		017	13			1150	60	80	2		"	"		1		✓	"	"						"	"	"	"	"	"	"	"	"	"	
	94		020	14			1150	60	80	2		"	"		49	2	✓	"	"						"	"	"	"	"	"	"	"	"	Moved up to S.P. #88	
	93		021	15			1150	60	80	2		"	"		45		✓	"	"						"	"	"	"	"	"	"	"	"	"	
	92		022	16			1150	60	80	2		"	"		41		✓	"	"						"	"	"	"	"	"	"	"	"	"	"
	91		023	17			1150	60	80	2		"	"		37		✓	"	"						"	"	"	"	"	"	"	"	"	"	"
	90		024	18			1150	60	80	2		"	"		33		✓	"	"						"	"	"	"	"	"	"	"	"	"	"
	89		025	19			1150	60	80	2		"	"		29		✓	"	"						"	"	"	"	"	"	"	"	"	"	"
	88		026	20			1150	60	80	2		"	"		25		✓	"	"						"	"	"	"	"	"	"	"	"	"	"
	87		027	21			1150	55	75	2		"	"		21		✓	"	"						"	"	"	"	"	"	"	"	"	"	"
	86		030	22			1150	50	70	2		"	"		17		✓	"	"						"	"	"	"	"	"	"	"	"	"	"
	85		031	23			1150	45	65	2		"	"		13		✓	"	"						"	"	"	"	"	"	"	"	"	"	"
	84		032	24			1155	43	65	2		"	"		9		✓	"	"						"	"	"	"	"	"	"	"	"	"	"
	83		033	25			1150	50	70	2		"	"		5		✓	"	"						"	"	"	"	"	"	"	"	"	"	"
	82		034	26			1150	50	70	2		"	"		1		✓	"	"						"	"	"	"	"	"	"	"	"	"	Moved up to S.P. #75

SEISMOMETER AND SPREAD INFORMATION						SHOT CONFIGURATION						DFS III SYSTEM PARAMETERS:						MISCELLANEOUS INFORMATION:						
CODE	SEIS. TYPE	NO./GP.	INT.	GROUP PATTERN	GP. INT.	SPREAD PATTERN							GAIN CONSTANT <u>30</u> DB						File #062-071 = D.R.D.					
												UPPER SET LIMIT <u>62.5</u> %						Tape # 698535						
												LOWER SET LIMIT <u>18</u> %						File #001 = Pulse test } Tape #						
												FORMAT TYPE:						File #002 = Test T.B. } 698536						
												<input type="checkbox"/> 9 TRACK <input checked="" type="checkbox"/> 21 TRACK GALVO LEVEL: 1-24 <u>21</u> DB    AUX <u>21</u> DB OTHER:												



CLIENT: U.S. NAVY      PARTY NO: 182      PROSPECT: N.P.R. 4      COUNTY:      STATE:      COUNTRY:      LEFT STORAGE:      ARRIVED FIELD:      LEFT FIELD:      ARRIVED STORAGE:      DATE: 5-20-75      OBSERVER: F. Grlsenius      PAGE: 2 of 2

LINE	PROFILE	IDENTIFICATION			SHOT CAL	PLAY BACK	TIME	SHOT			NO CAPS	CODE	S.P. OFFSET	SPREAD				TAPE			GAIN								FILTERS			REMARKS					
		REEL NUMBER	FILE NUMBER	TOP				BOT	NO. 1 DIR.	CODE				S.P. SEIS OFFSET	SEIS DEPTH	CDP SWITCH	SETUP	SAMPLE RATE MS	RECORD LENGTH	PARITY ERRORS	MODE	INITIAL GAIN (DB)								FINAL GAIN DB	RELEASE RATE		TRIP DELAY AUTO	HIGH CUT FREQ.	LOW CUT		NOTCH
																						1-24	5-8	9-12	13-16	17-20	21-24	FREQ.	SLOPE						IN	OUT	
32	81	698 536	035	27	P/W		1X50	50	70	2		SE	10'	1	49	3	✓	6	ORANGE	48	48	48	48	48	42	90	Est	768	124	8	36	out	Wind increasing in velocity.				
	80		036	28			1X50	50	70	2		"	"		45		✓	"	"	42	48	48	48	48	48	"	"	"	"	"	"	"	"	"	"	"	
	79		037	29			1X50	50	70	2		"	"		41		✓	"	"							"	"	"	"	"	"	"	"	"	"		
	78		040	30			1X50	40	60	2		"	"		37		✓	"	"							"	"	"	"	"	"	"	"	"	"		
	77		041	31			1X50	50	70	2		"	"		33		✓	"	"							"	"	"	"	"	"	"	"	"	"		
	76		042	32			1X50	50	70	2		"	"		29		✓	"	"							"	"	"	"	"	"	"	"	"	"	"	
	75		043	33			1X50	50	70	2		"	"		25		✓	"	"							"	"	"	"	"	"	"	"	"	"	"	
	74		044	34			1X50	50	70	2		"	"		21		✓	"	"							"	"	"	"	"	"	"	"	"	"	"	
	73		045	35			1X50	50	70	2		"	"		17		✓	"	"							"	"	"	"	"	"	"	"	"	"	"	
	72		046	36			1X50	50	70	2		"	"		13		✓	"	"							"	"	"	"	"	"	"	"	"	"	"	
	71		047	37			1X50	50	70	2	50'S	"	"		9		✓	"	"							"	"	"	"	"	"	"	"	"	"	offset 50'S.	
	70		050	38			1X50	50	70	2		"	"		5		✓	"	"							"	"	"	"	"	"	"	"	"	"	"	
	69		051	39			1X50	50	70	2		"	"		1		✓	"	"							"	"	"	"	"	"	"	"	"	"	END OF LINE #32 Picked-up-went to Camp.	

SEISMOMETER AND SPREAD INFORMATION							SHOT CONFIGURATION	DFS III SYSTEM PARAMETERS:	MISCELLANEOUS INFORMATION:
CODE	SEIS. TYPE	NO./GP.	INT.	GROUP PATTERN	GP. INT.	SPREAD PATTERN		GAIN CONSTANT _____ DB	
								UPPER SET LIMIT _____ %	
								LOWER SET LIMIT _____ %	
								FORMAT TYPE:	
								<input type="checkbox"/> 9 TRACK <input type="checkbox"/> 21 TRACK	
								GALVO LEVEL:	
								1-24 _____ DB    AUX _____ DB	
								OTHER:	