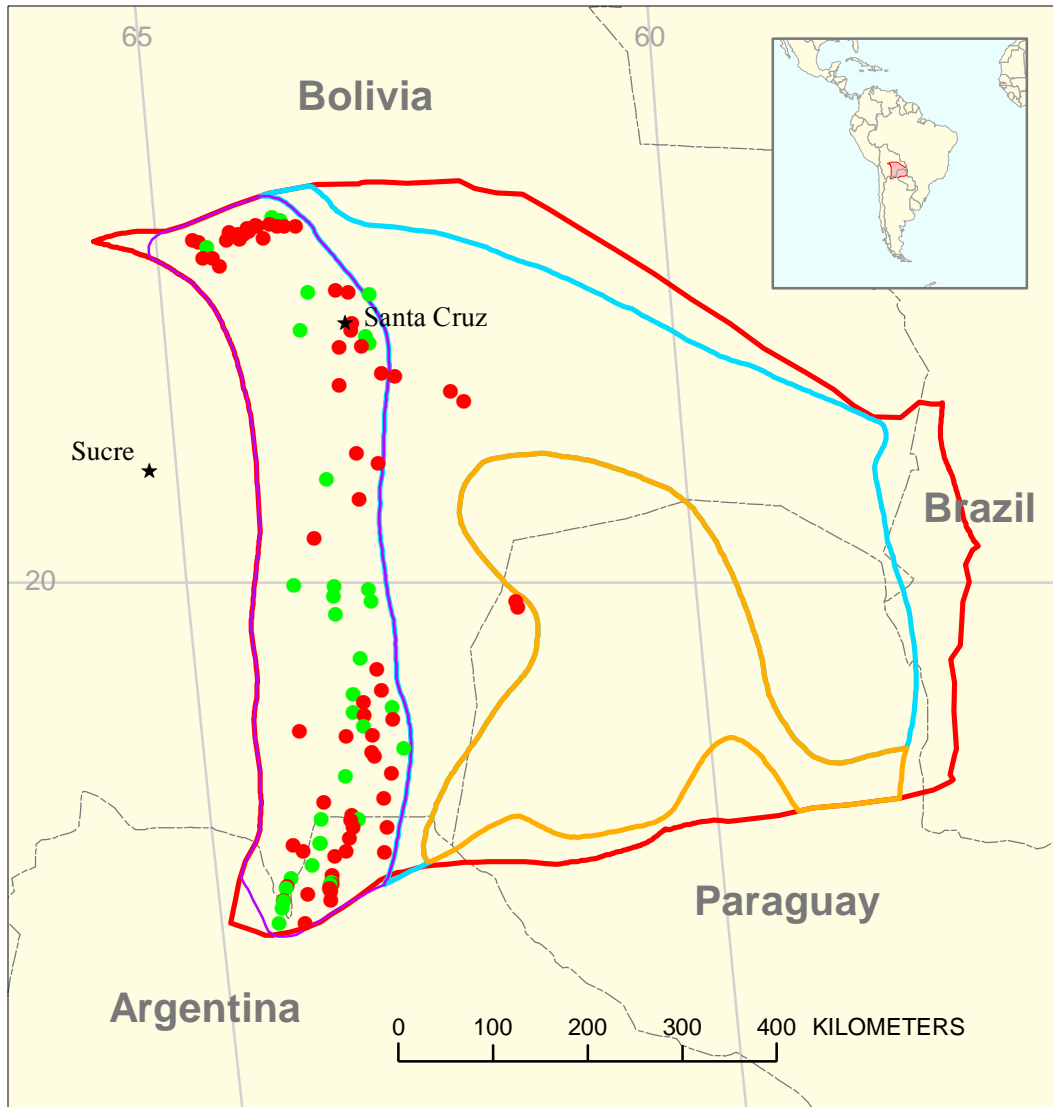
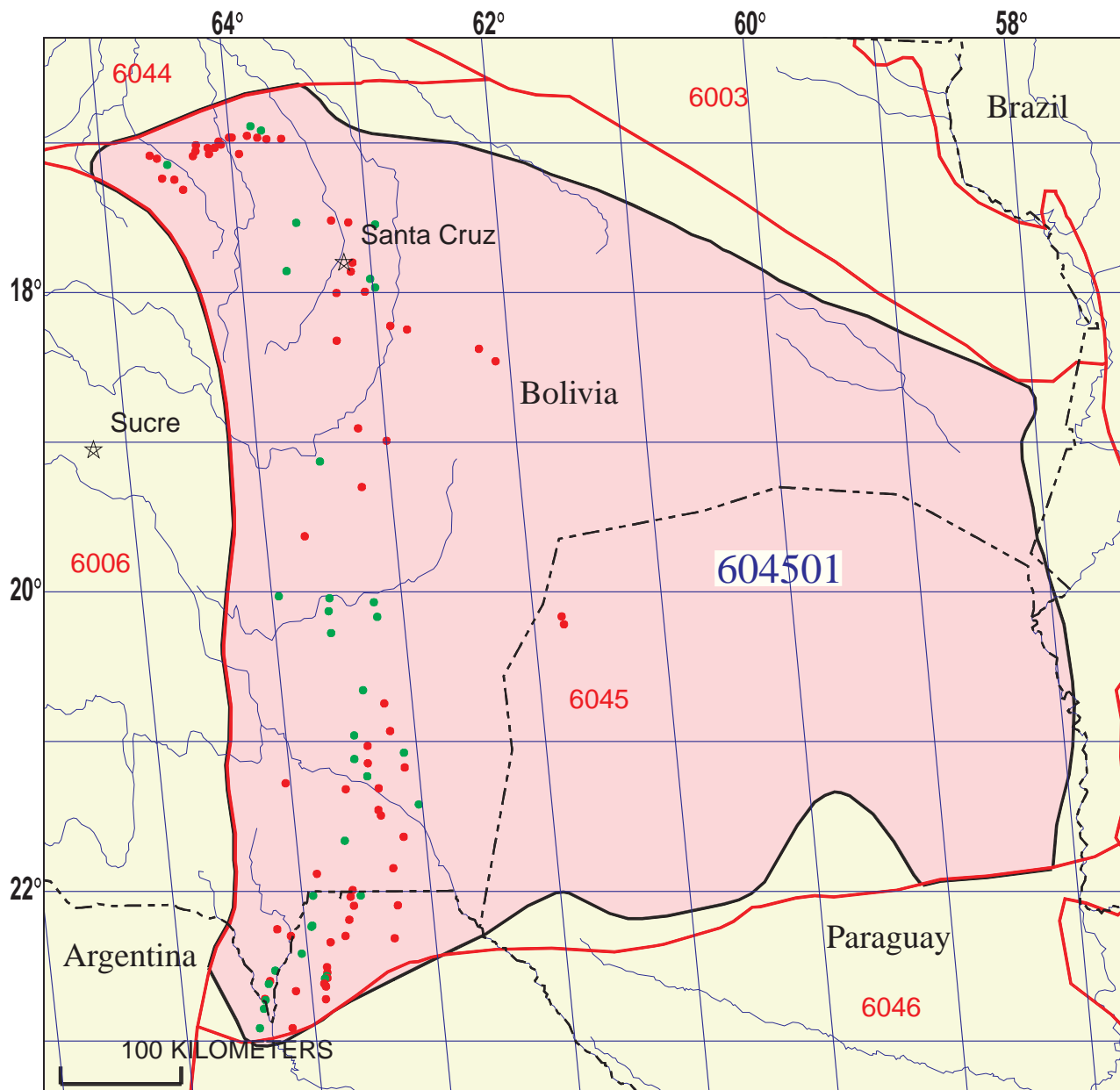


Los Monos-Machareti Total Petroleum System 604501



- Sub-Andean Fold and Thrust Belt Assessment Unit 60450101
- Foreland Basins Assessment Unit 60450102
- Foreland Central Chaco High Assessment Unit 60450103
- Santa Cruz-Tarija Geologic Province 6045

- Sub-Andean Fold and Thrust Belt Assessment Unit 60450101
- Foreland Basins Assessment Unit 60450102
- Foreland Central Chaco High Assessment Unit 60450103



Los Monos-Machareti Total Petroleum System - 604501

EXPLANATION

- Hydrography
- Shoreline
- 6045 Geologic province code and boundary
- - - Country boundary
- Gas field centerpoint
- Oil field centerpoint
- 604501 Total Petroleum System code and boundary

Projection: Robinson. Central meridian: 0

**Los Monos-Machareti, Total Petroleum System 604501
Assessment Results Summary**

[MMBO, million barrels of oil. BCFG, billion cubic feet of gas. MMBNGL, million barrels of natural gas liquids. MFS, minimum field size assessed (MMBO or BCFG). Prob., probability (including both geologic and accessibility probabilities) of at least one field equal to or greater than the MFS. Results shown are fully risked estimates. For gas fields, all liquids are included under the NGL (natural gas liquids) category. F95 represents a 95 percent chance of at least the amount tabulated. Other fractiles are defined similarly. Fractiles are additive under the assumption of perfect positive correlation. Shading indicates not applicable]

| Code and Field Type | MFS | Prob. (0-1) | Undiscovered Resources | | | | | | | | | | | |
|---|-----|-------------|------------------------|-------|-------|-------|------------|--------|--------|--------|--------------|-------|-------|-------|
| | | | Oil (MMBO) | | | | Gas (BCFG) | | | | NGL (MMBNGL) | | | |
| | | | F95 | F50 | F5 | Mean | F95 | F50 | F5 | Mean | F95 | F50 | F5 | Mean |
| 60450101 Sub-Andean Fold and Thrust Belt Assessment Unit | | | | | | | | | | | | | | |
| Oil Fields | 1 | 1.00 | 66 | 174 | 317 | 181 | 168 | 464 | 938 | 497 | 9 | 27 | 60 | 30 |
| Gas Fields | 6 | | | | | | | 9,328 | 19,669 | 31,991 | 20,024 | 320 | 725 | 1,324 |
| Total | | 1.00 | 66 | 174 | 317 | 181 | 9,496 | 20,133 | 32,929 | 20,521 | 329 | 752 | 1,384 | 791 |
| 60450102 Foreland Basins Assessment Unit | | | | | | | | | | | | | | |
| Oil Fields | 3 | 1.00 | 211 | 1,099 | 2,841 | 1,254 | 520 | 2,763 | 7,739 | 3,256 | 29 | 160 | 482 | 195 |
| Gas Fields | 18 | | | | | | | 602 | 3,587 | 9,383 | 4,119 | 21 | 128 | 364 |
| Total | | 1.00 | 211 | 1,099 | 2,841 | 1,254 | 1,122 | 6,350 | 17,122 | 7,375 | 51 | 289 | 846 | 348 |
| 60450103 Foreland Central Chaco High Assessment Unit | | | | | | | | | | | | | | |
| Oil Fields | 3 | 0.60 | 0 | 446 | 2,390 | 711 | 0 | 1,101 | 6,355 | 1,845 | 0 | 63 | 394 | 111 |
| Gas Fields | 18 | | | | | | | 0 | 818 | 4,686 | 1,366 | 0 | 29 | 178 |
| Total | | 0.60 | 0 | 446 | 2,390 | 711 | 0 | 1,919 | 11,040 | 3,211 | 0 | 91 | 572 | 161 |
| 604501 Total: Los Monos-Machareti Total Petroleum System | | | | | | | | | | | | | | |
| Oil Fields | | 1.00 | 277 | 1,719 | 5,548 | 2,145 | 687 | 4,328 | 15,032 | 5,597 | 39 | 250 | 936 | 336 |
| Gas Fields | | | | | | | | 9,931 | 24,073 | 46,059 | 25,510 | 341 | 883 | 1,866 |
| Total | | 1.00 | 277 | 1,719 | 5,548 | 2,145 | 10,618 | 28,401 | 61,092 | 31,107 | 380 | 1,133 | 2,802 | 1,300 |