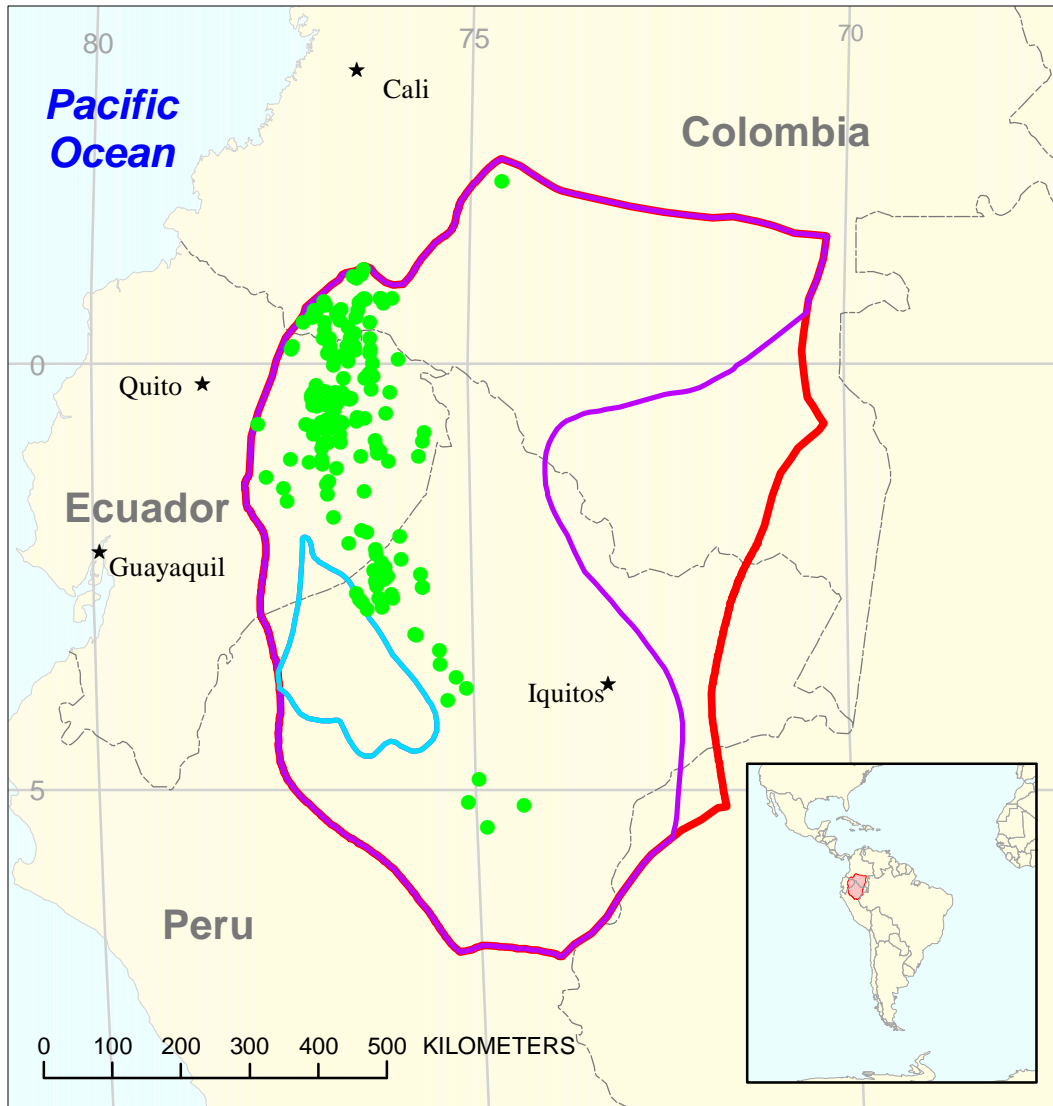





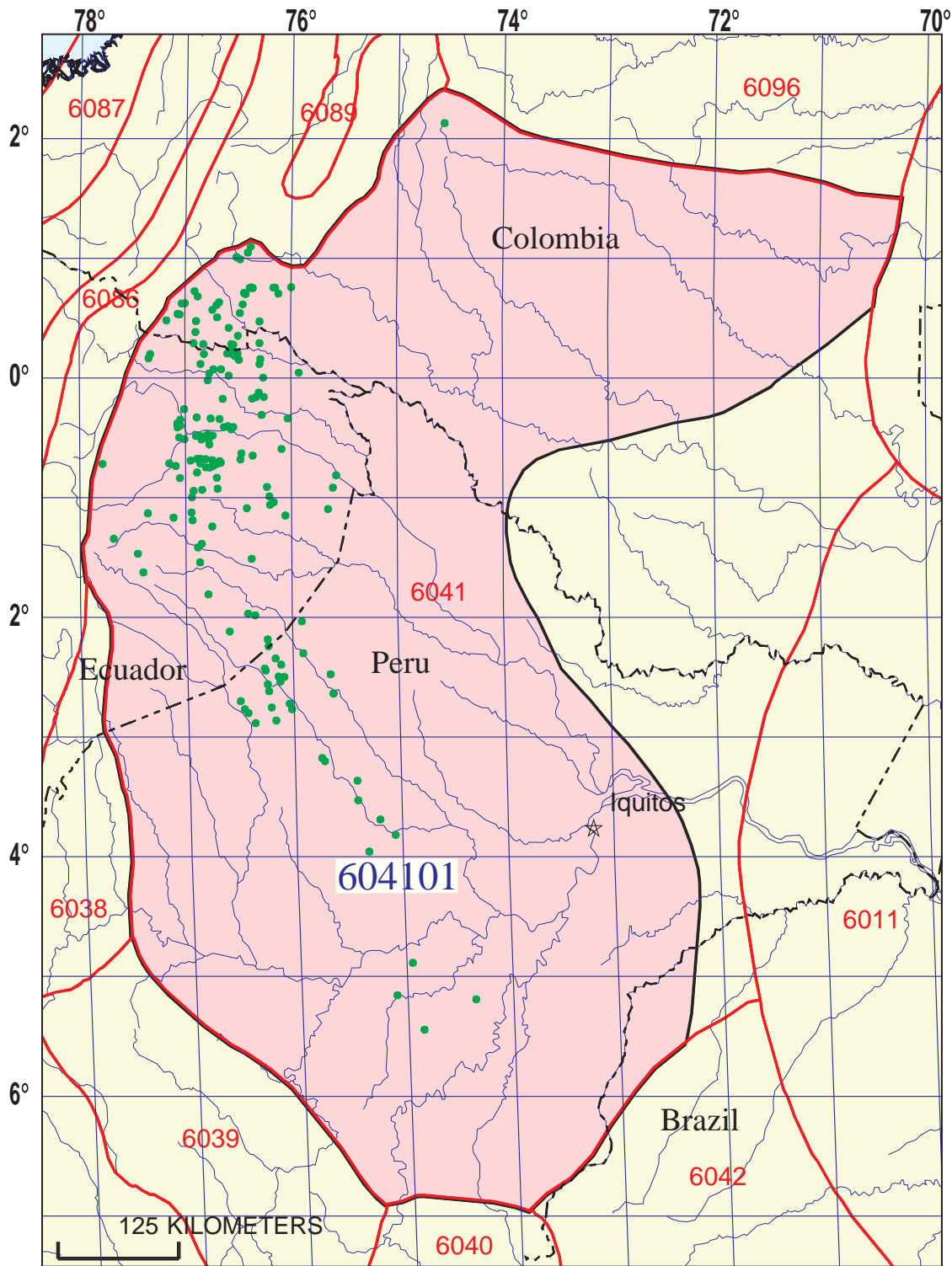


Mesozoic-Cenozoic Total Petroleum System 604101



-  Hollin-Napo Assessment Unit 60410101
-  Basin-Center Gas Assessment Unit 60410102

-  Hollin-Napo Assessment Unit 60410101
-  Basin-Center Gas Assessment Unit 60410102
-  Putumayo-Oriente-Maranon Basin Geologic Province 6041



Mesozoic-Cenozoic Total Petroleum System - 604101

EXPLANATION

- Hydrography
- Shoreline
- 6041 Geologic province code and boundary
- - - Country boundary
- Gas field centerpoint
- Oil field centerpoint
- 604101 — Total Petroleum System code and boundary

Projection: Robinson. Central meridian: 0

Mesozoic-Cenozoic, Total Petroleum System 604101
Assessment Results Summary

[MMBO, million barrels of oil. BCFG, billion cubic feet of gas. MMBNGL, million barrels of natural gas liquids. MFS, minimum field size assessed (MMBO or BCFG). Prob., probability (including both geologic and accessibility probabilities) of at least one field equal to or greater than the MFS. Results shown are fully risked estimates. For gas fields, all liquids are included under the NGL (natural gas liquids) category. F95 represents a 95 percent chance of at least the amount tabulated. Other fractiles are defined similarly. Fractiles are additive under the assumption of perfect positive correlation. Shading indicates not applicable]

| Code and Field Type | MFS | Prob. (0-1) | Undiscovered Resources | | | | | | | | | | | |
|---|-----|-------------|------------------------|-------|-------|-------|------------|-----|-------|------|--------------|-----|----|------|
| | | | Oil (MMBO) | | | | Gas (BCFG) | | | | NGL (MMBNGL) | | | |
| | | | F95 | F50 | F5 | Mean | F95 | F50 | F5 | Mean | F95 | F50 | F5 | Mean |
| 60410101 Hollin-Napo Assessment Unit | | | | | | | | | | | | | | |
| Oil Fields | 1 | 1.00 | 1,028 | 2,781 | 5,803 | 3,023 | 236 | 674 | 1,544 | 755 | 4 | 13 | 33 | 15 |
| Gas Fields | 6 | | | | | | 0 | 0 | 0 | 0 | 0 | 0 | 0 | 0 |
| Total | | 1.00 | 1,028 | 2,781 | 5,803 | 3,023 | 236 | 674 | 1,544 | 755 | 4 | 13 | 33 | 15 |
| 604101 Total: Mesozoic-Cenozoic Total Petroleum System | | | | | | | | | | | | | | |
| Oil Fields | | 1.00 | 1,028 | 2,781 | 5,803 | 3,023 | 236 | 674 | 1,544 | 755 | 4 | 13 | 33 | 15 |
| Gas Fields | | | | | | | 0 | 0 | 0 | 0 | 0 | 0 | 0 | 0 |
| Total | | 1.00 | 1,028 | 2,781 | 5,803 | 3,023 | 236 | 674 | 1,544 | 755 | 4 | 13 | 33 | 15 |