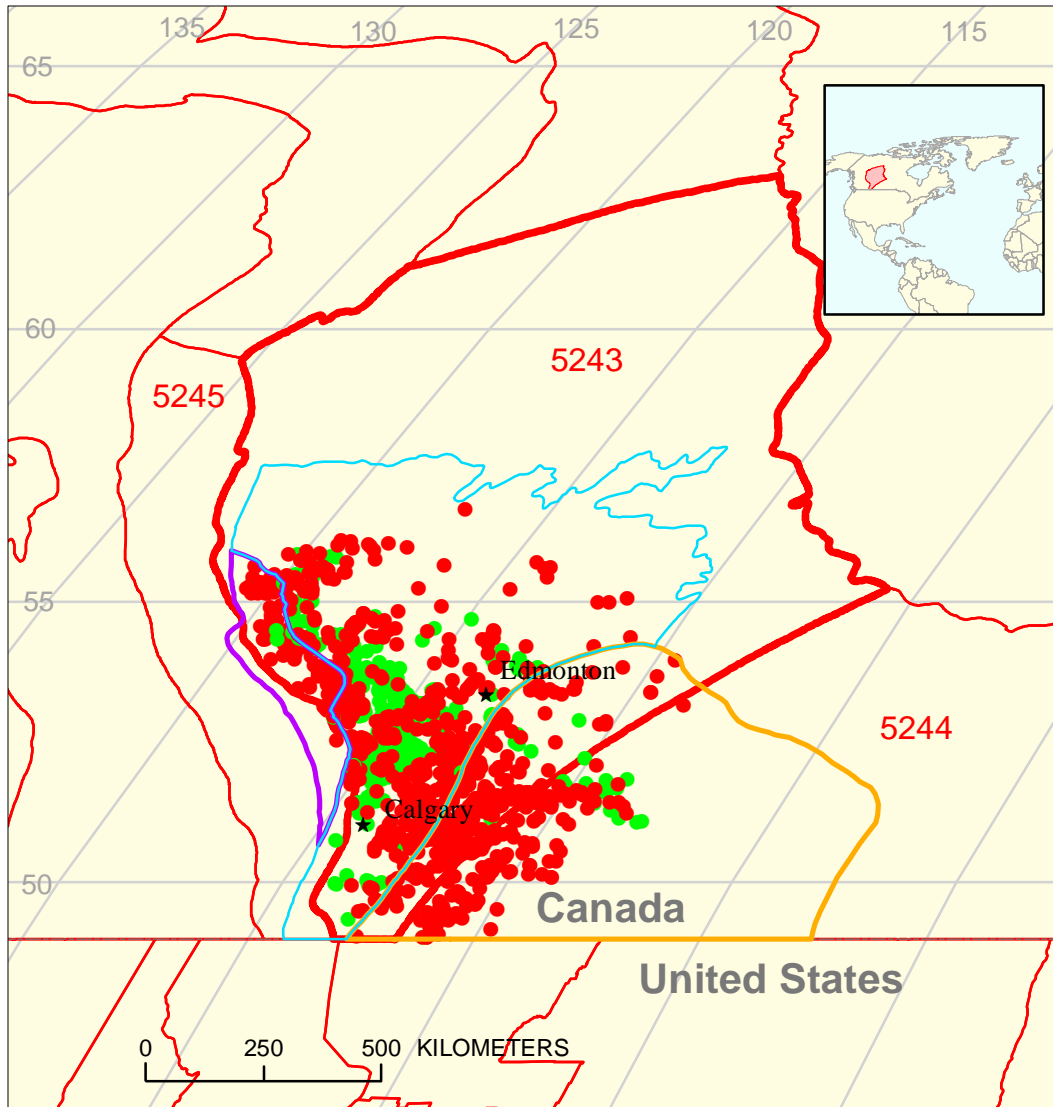





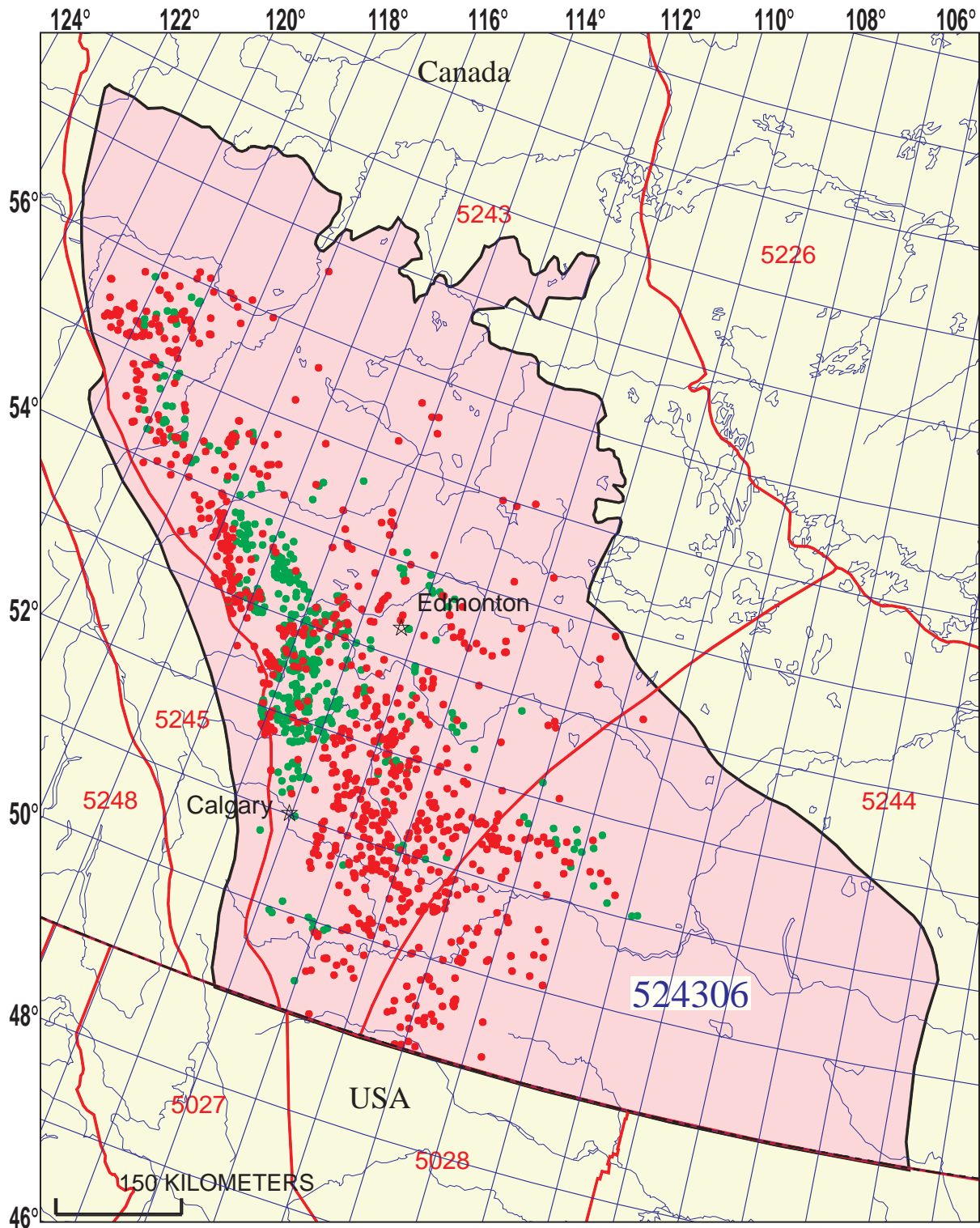


Second White Specks-Cardium Total Petroleum System 524306



-  Second White Specks-Cardium Gas Assessment Unit 52430601
-  Second White Specks-Cardium Oil and Gas Assessment Unit 52430602
-  Upper Cretaceous Eastern Shallow Gas Assessment Unit 52430603

-  Second White Specks-Cardium Gas Assessment Unit 52430601
-  Second White Specks-Cardium Oil and Gas Assessment Unit 52430602
-  Upper Cretaceous Eastern Shallow Gas Assessment Unit 52430603
-  Alberta Basin Geologic Province 5243
-  Other geologic province boundary



Second White Specks-Cardium Total Petroleum System - 524306

EXPLANATION

- Hydrography
- Shoreline
- 5243 Geologic province code and boundary
- Country boundary
- Gas pool centerpoint
- Oil pool centerpoint
- 524306 — Total Petroleum System code and boundary

Projection: Lambert. Standard parallels: 49 and 77. Central meridian: -92

**Second White Specks-Cardium, Total Petroleum System 524306
Assessment Results Summary**

[MMBO, million barrels of oil. BCFG, billion cubic feet of gas. MMBNGL, million barrels of natural gas liquids. MFS, minimum field size assessed (MMBO or BCFG). Prob., probability (including both geologic and accessibility probabilities) of at least one field equal to or greater than the MFS. Results shown are fully risked estimates. For gas fields, all liquids are included under the NGL (natural gas liquids) category. F95 represents a 95 percent chance of at least the amount tabulated. Other fractiles are defined similarly. Fractiles are additive under the assumption of perfect positive correlation. Shading indicates not applicable]

Code and Field Type	MFS	Prob. (0-1)	Undiscovered Resources										
			Oil (MMBO)				Gas (BCFG)				NGL (MMBNGL)		
			F95	F50	F5	Mean	F95	F50	F5	Mean	F95	F50	F5

52430601 Second White Specks-Cardium Gas Assessment Unit

Oil Fields	1	1.00	0	0	0	0	0	0	0	0	0	0	0	0
Gas Fields	3					117	268	506	285	3	8	16	9	
Total		1.00	0	0	0	117	268	506	285	3	8	16	9	

52430602 Second White Specks-Cardium Oil and Gas Assessment Unit

Oil Fields	1	1.00	14	34	61	36	6	15	30	16	0	1	2	1
Gas Fields	3						365	787	1,385	824	10	23	45	25
Total		1.00	14	34	61	36	371	802	1,415	840	10	24	47	26

524306 Total: Second White Specks-Cardium Total Petroleum System

Oil Fields		1.00	14	34	61	36	6	15	30	16	0	1	2	1
Gas Fields							482	1,055	1,891	1,109	13	31	61	33
Total		1.00	14	34	61	36	488	1,070	1,921	1,126	13	32	63	34