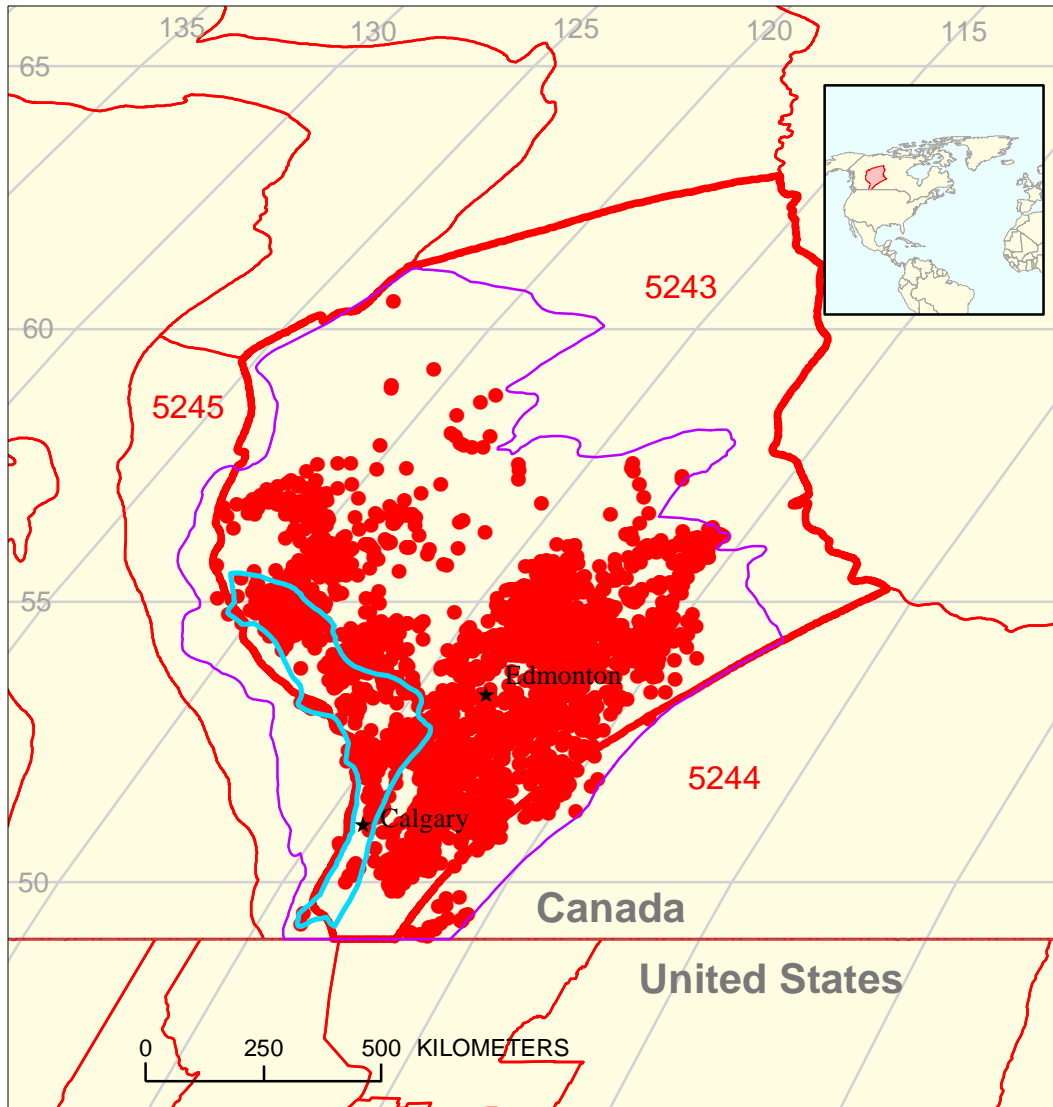






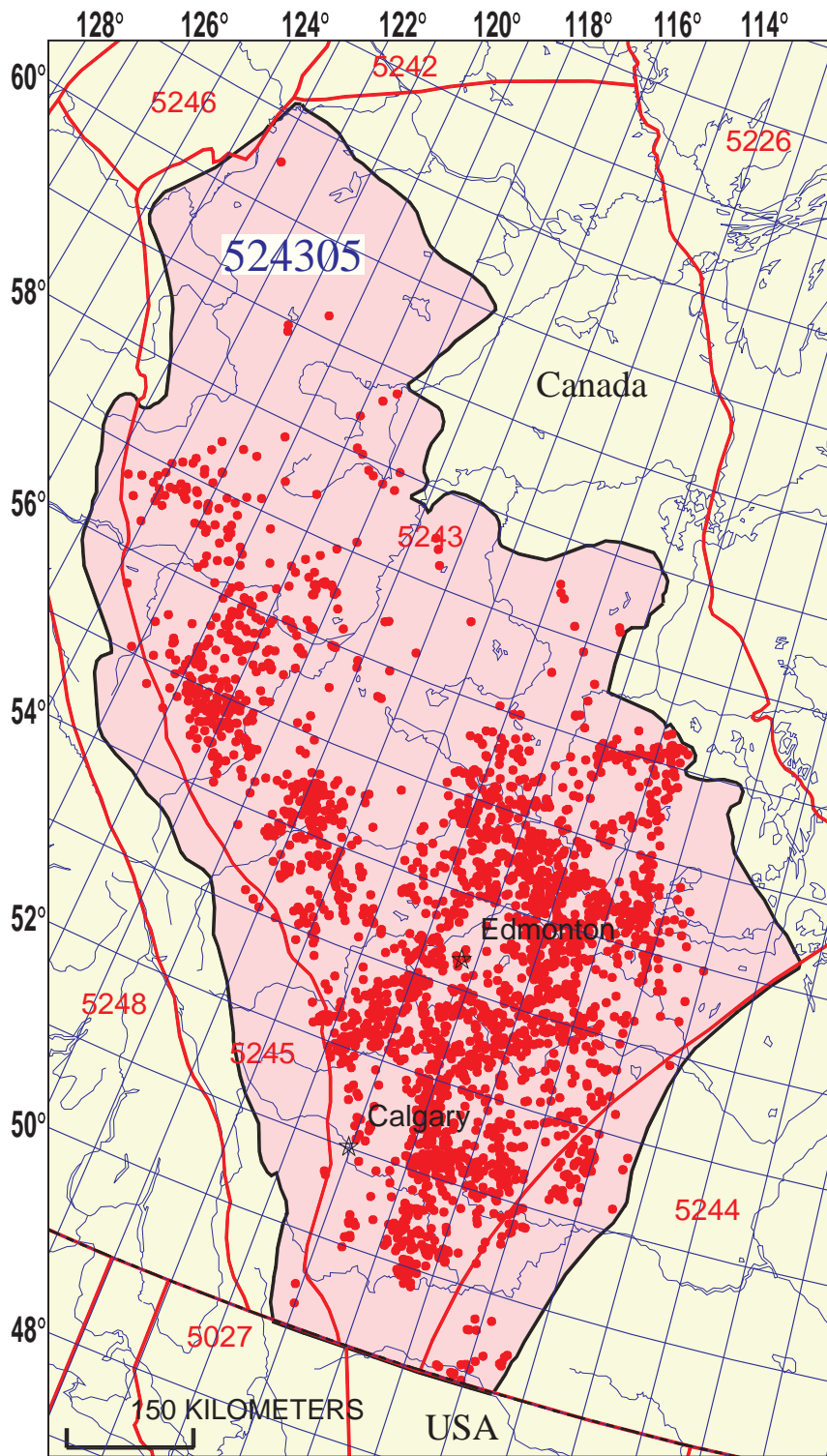


Mannville-Upper Mannville Total Petroleum System 524305



-  Mannville Gas Assessment Unit 52430501
-  Mannville Continuous (Basin-Center) Gas Assessment Unit 52430502

-  Mannville Gas Assessment Unit 52430501
-  Mannville Continuous (Basin-Center) Gas Assessment Unit 52430502
-  Alberta Basin Geologic Province 5243
-  Other geologic province boundary



Mannville-Upper Mannville Total Petroleum System - 524305

EXPLANATION

- Hydrography
- Shoreline
- 5243 Geologic province code and boundary
- Country boundary
- Gas pool centerpoint
- Oil pool centerpoint
- 524305 Total Petroleum System code and boundary

Projection: Lambert. Standard parallels: 49 and 77. Central meridian: -92

**Mannville-Upper Mannville, Total Petroleum System 524305
Assessment Results Summary**

[MMBO, million barrels of oil. BCFG, billion cubic feet of gas. MMBNGL, million barrels of natural gas liquids. MFS, minimum field size assessed (MMBO or BCFG). Prob., probability (including both geologic and accessibility probabilities) of at least one field equal to or greater than the MFS. Results shown are fully risked estimates. For gas fields, all liquids are included under the NGL (natural gas liquids) category. F95 represents a 95 percent chance of at least the amount tabulated. Other fractiles are defined similarly. Fractiles are additive under the assumption of perfect positive correlation. Shading indicates not applicable]

Code and Field Type	MFS	Prob. (0-1)	Undiscovered Resources											
			Oil (MMBO)				Gas (BCFG)				NGL (MMBNGL)			
			F95	F50	F5	Mean	F95	F50	F5	Mean	F95	F50	F5	Mean

52430501 Mannville Gas Assessment Unit

Oil Fields	1	1.00	0	0	0	0	0	0	0	0	0	0	0	0
Gas Fields	3	1.00					2,297	4,402	7,472	4,597	41	86	162	92
Total		1.00	0	0	0	0	2,297	4,402	7,472	4,597	41	86	162	92

524305 Total: Mannville-Upper Mannville Total Petroleum System

Oil Fields		1.00	0	0	0	0	0	0	0	0	0	0	0	0
Gas Fields		1.00					2,297	4,402	7,472	4,597	41	86	162	92
Total		1.00	0	0	0	0	2,297	4,402	7,472	4,597	41	86	162	92