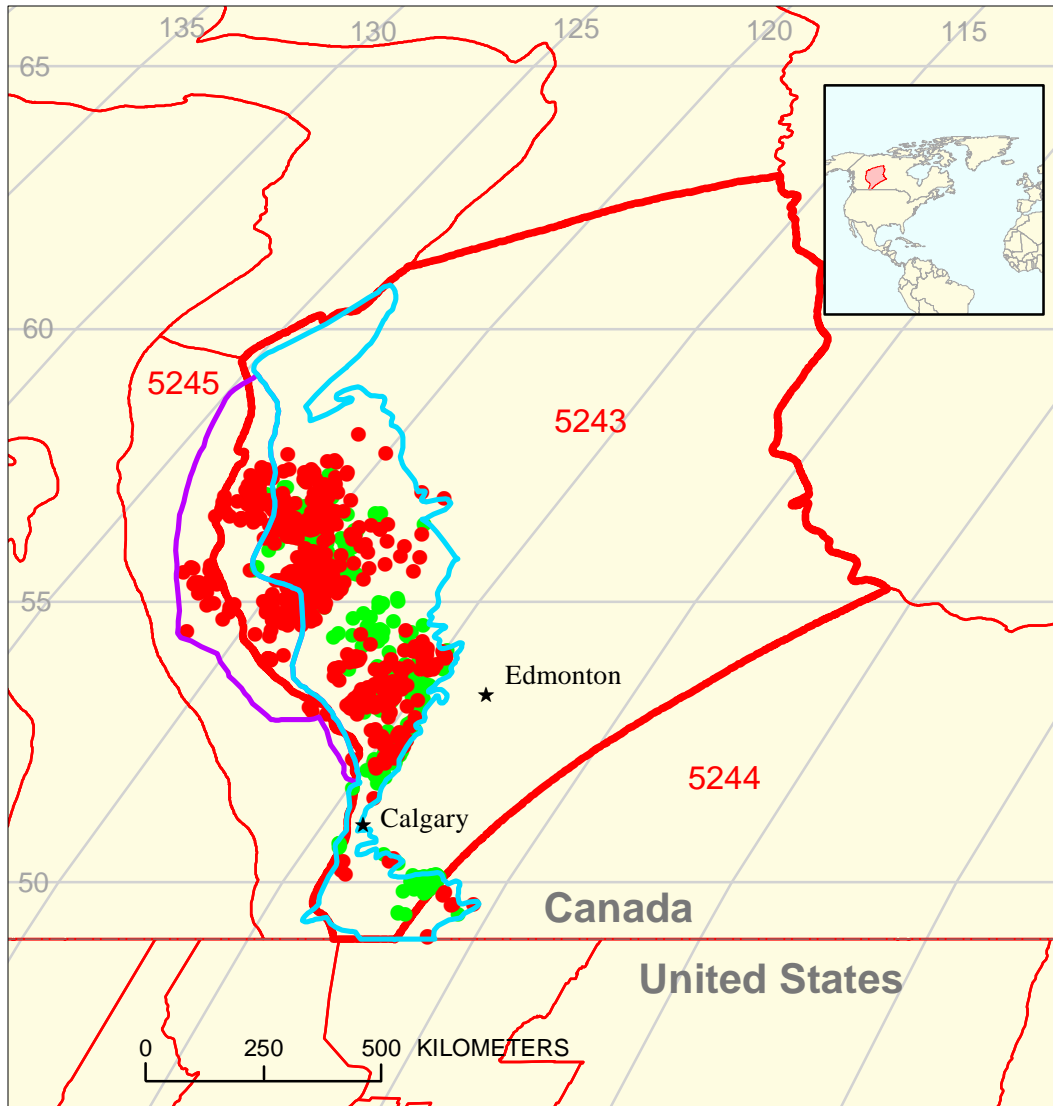






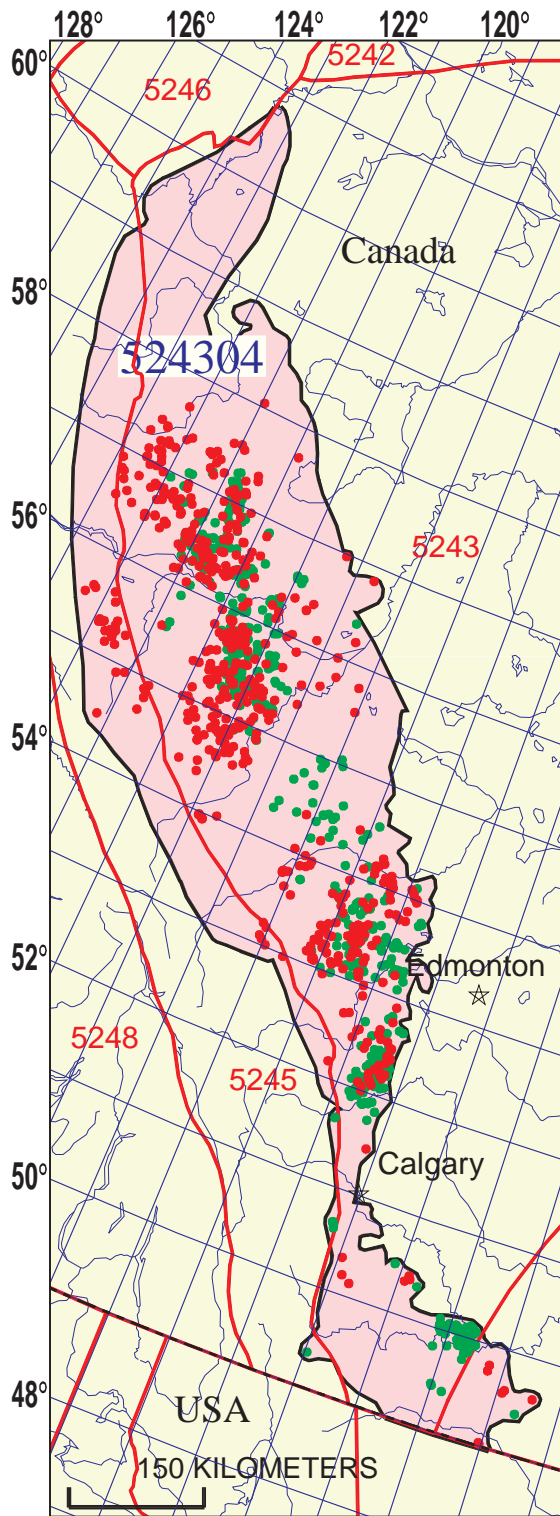


Combined Triassic/Jurassic Total Petroleum System 524304



-  Combined Triassic/Jurassic Gas Assessment Unit 52430401
-  Combined Triassic/Jurassic Oil and Gas Assessment Unit 52430402

-  Combined Triassic/Jurassic Gas Assessment Unit 52430401
-  Combined Triassic/Jurassic Oil and Gas Assessment Unit 52430402
-  Alberta Basin Geologic Province 5243
-  Other geologic province boundary



Combined Triassic/Jurassic Total Petroleum System - 524304

EXPLANATION

- Hydrography
- Shoreline
- 5243 Geologic province code and boundary
- Country boundary
- Gas pool centerpoint
- Oil pool centerpoint
- 524304 Total Petroleum System code and boundary

Projection: Lambert. Standard parallels: 49 and 77. Central meridian: -92

**Combined Triassic/Jurassic, Total Petroleum System 524304
Assessment Results Summary**

[MMBO, million barrels of oil. BCFG, billion cubic feet of gas. MMBNGL, million barrels of natural gas liquids. MFS, minimum field size assessed (MMBO or BCFG). Prob., probability (including both geologic and accessibility probabilities) of at least one field equal to or greater than the MFS. Results shown are fully risked estimates. For gas fields, all liquids are included under the NGL (natural gas liquids) category. F95 represents a 95 percent chance of at least the amount tabulated. Other fractiles are defined similarly. Fractiles are additive under the assumption of perfect positive correlation. Shading indicates not applicable]

Code and Field Type	MFS	Prob. (0-1)	Undiscovered Resources										
			Oil (MMBO)				Gas (BCFG)				NGL (MMBNGL)		
			F95	F50	F5	Mean	F95	F50	F5	Mean	F95	F50	F5

52430401 Combined Triassic/Jurassic Gas Assessment Unit

Oil Fields	1	1.00	0	0	0	0	0	0	0	0	0	0	0	0
Gas Fields	3						563	1,219	2,236	1,289	11	26	53	28
Total		1.00	0	0	0	0	563	1,219	2,236	1,289	11	26	53	28

52430402 Combined Triassic/Jurassic Oil and Gas Assessment Unit

Oil Fields	1	1.00	36	88	183	96	15	39	88	43	1	2	6	3
Gas Fields	3						325	767	1,569	834	9	22	50	25
Total		1.00	36	88	183	96	340	806	1,657	877	10	25	56	28

524304 Total: Combined Triassic/Jurassic Total Petroleum System

Oil Fields		1.00	36	88	183	96	15	39	88	43	1	2	6	3
Gas Fields							888	1,987	3,805	2,123	20	49	103	53
Total		1.00	36	88	183	96	902	2,025	3,893	2,166	21	51	109	56