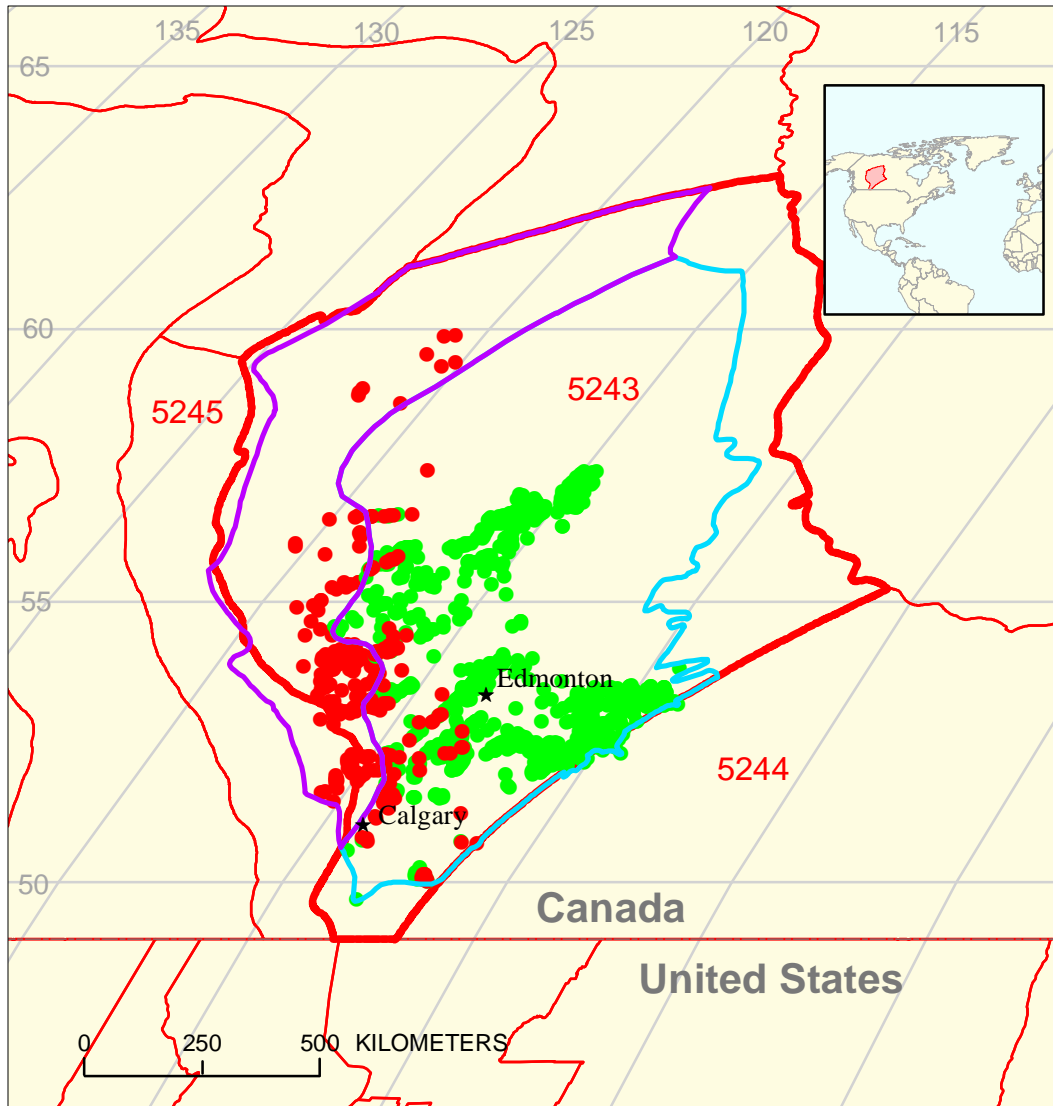






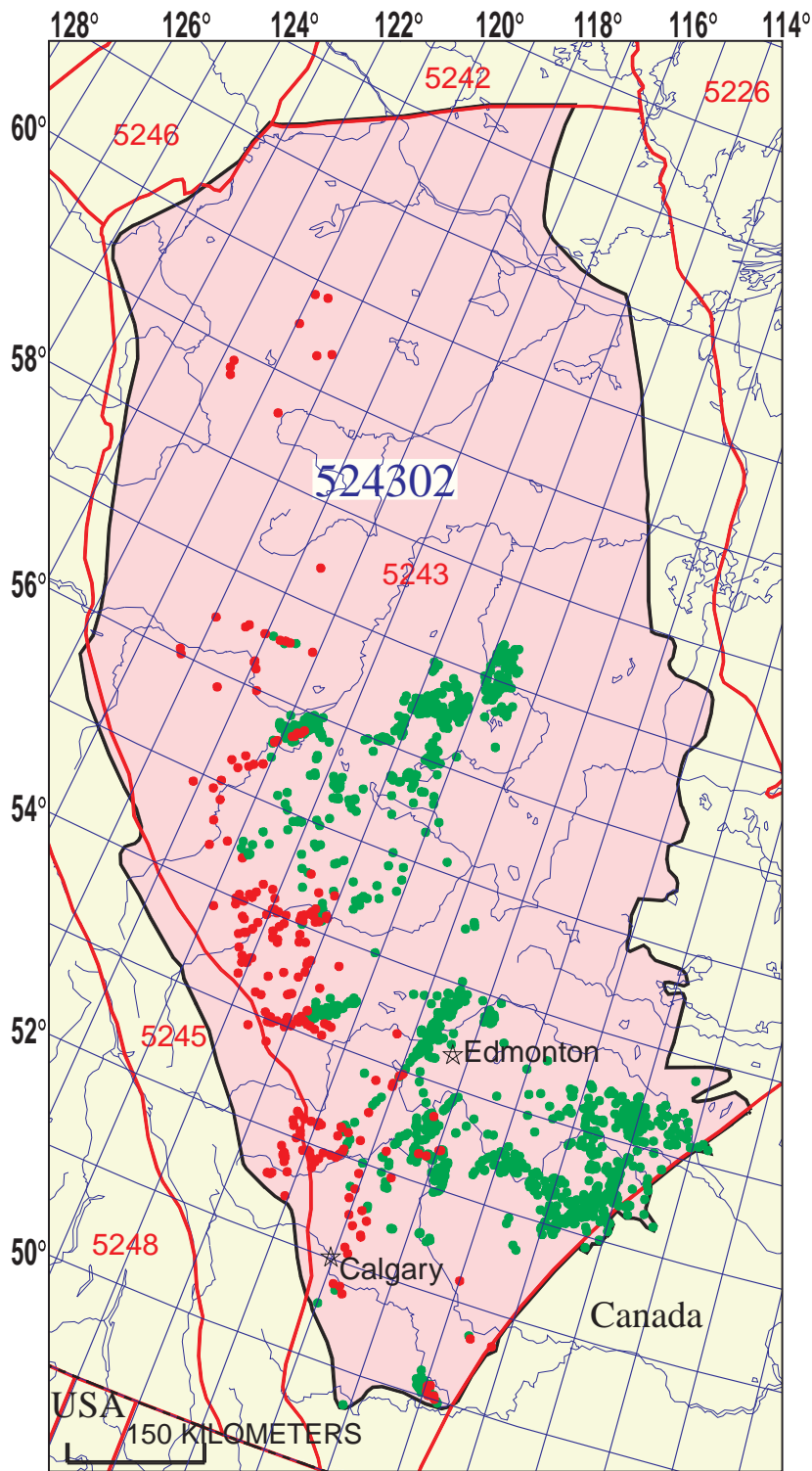


# Duvernay-Leduc Total Petroleum System 524302



-  Leduc Gas Assessment Unit 52430201
-  Leduc Oil and Gas Assessment Unit 52430202

-  Leduc Gas Assessment Unit 52430201
-  Leduc Oil and Gas Assessment Unit 52430202
-  Alberta Basin Geologic Province 5243
-  Other geologic province boundary



## Duvernay-Leduc Total Petroleum System - 524302

### EXPLANATION

- Hydrography
- Shoreline
- 5243 Geologic province code and boundary
- - - Country boundary
- Gas pool centerpoint
- Oil pool centerpoint
- 524302 — Total Petroleum System code and boundary

Projection: Lambert. Standard parallels: 49 and 77. Central meridian: -92

**Duvernay-Leduc, Total Petroleum System 524302**  
**Assessment Results Summary**

[MMBO, million barrels of oil. BCFG, billion cubic feet of gas. MMBNGL, million barrels of natural gas liquids. MFS, minimum field size assessed (MMBO or BCFG). Prob., probability (including both geologic and accessibility probabilities) of at least one field equal to or greater than the MFS. Results shown are fully risked estimates. For gas fields, all liquids are included under the NGL (natural gas liquids) category. F95 represents a 95 percent chance of at least the amount tabulated. Other fractiles are defined similarly. Fractiles are additive under the assumption of perfect positive correlation. Shading indicates not applicable]

Code and Field Type	MFS	Prob. (0-1)	Undiscovered Resources											
			Oil (MMBO)				Gas (BCFG)				NGL (MMBNGL)			
			F95	F50	F5	Mean	F95	F50	F5	Mean	F95	F50	F5	Mean
<b>52430201 Leduc Gas Assessment Unit</b>														
Oil Fields	1	1.00	0	0	0	0	0	0	0	0	0	0	0	0
Gas Fields	3						954	2,349	4,203	2,442	34	87	172	93
Total		1.00	0	0	0	0	954	2,349	4,203	2,442	34	87	172	93
<b>52430202 Leduc Oil and Gas Assessment Unit</b>														
Oil Fields	1	1.00	209	492	818	501	191	479	889	501	11	28	57	30
Gas Fields	3						130	265	480	281	4	10	20	11
Total		1.00	209	492	818	501	321	744	1,369	782	15	38	77	41
<b>524302 Total: Duvernay-Leduc Total Petroleum System</b>														
Oil Fields		1.00	209	492	818	501	191	479	889	501	11	28	57	30
Gas Fields							1,084	2,614	4,684	2,723	38	97	191	103
Total		1.00	209	492	818	501	1,275	3,093	5,573	3,224	49	124	249	133