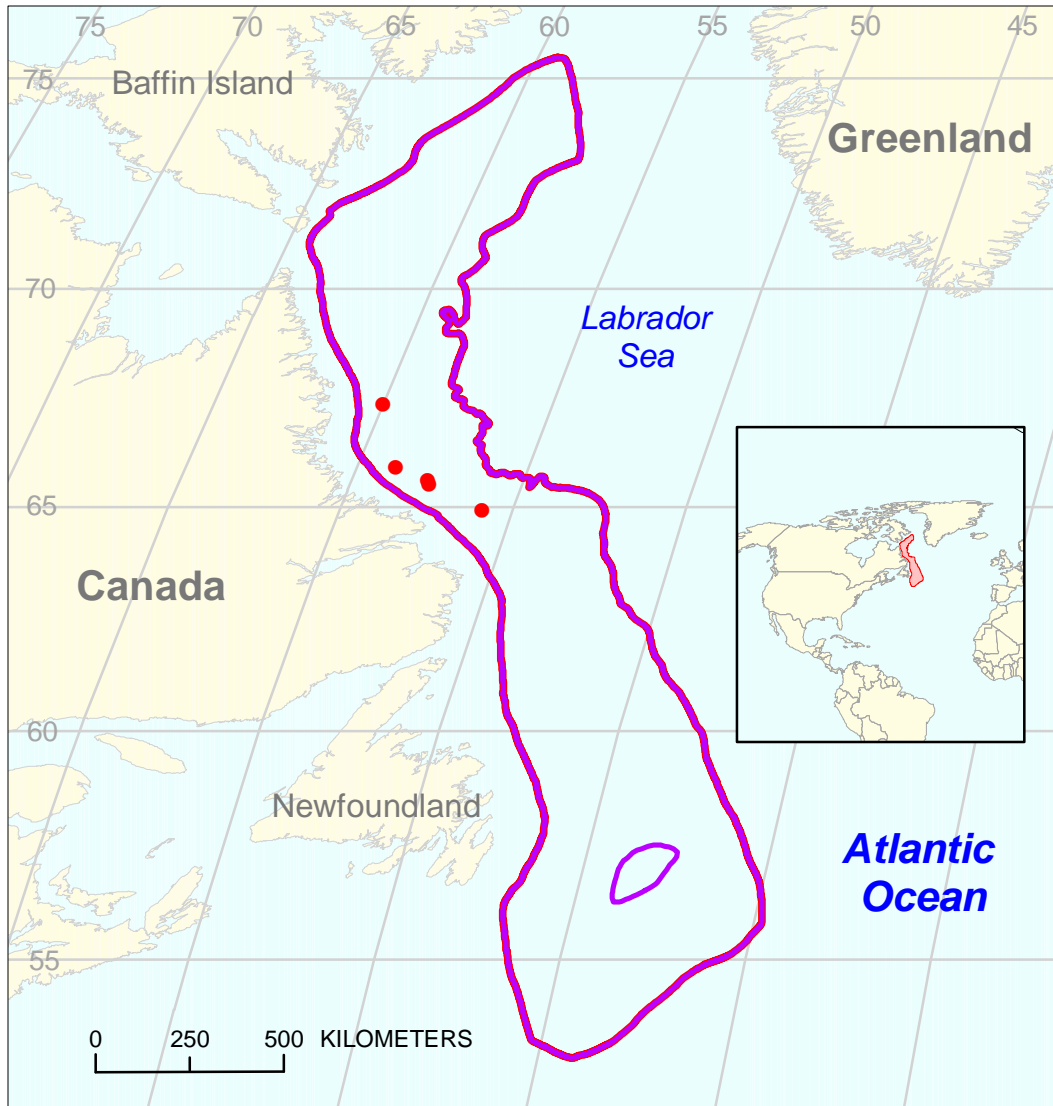


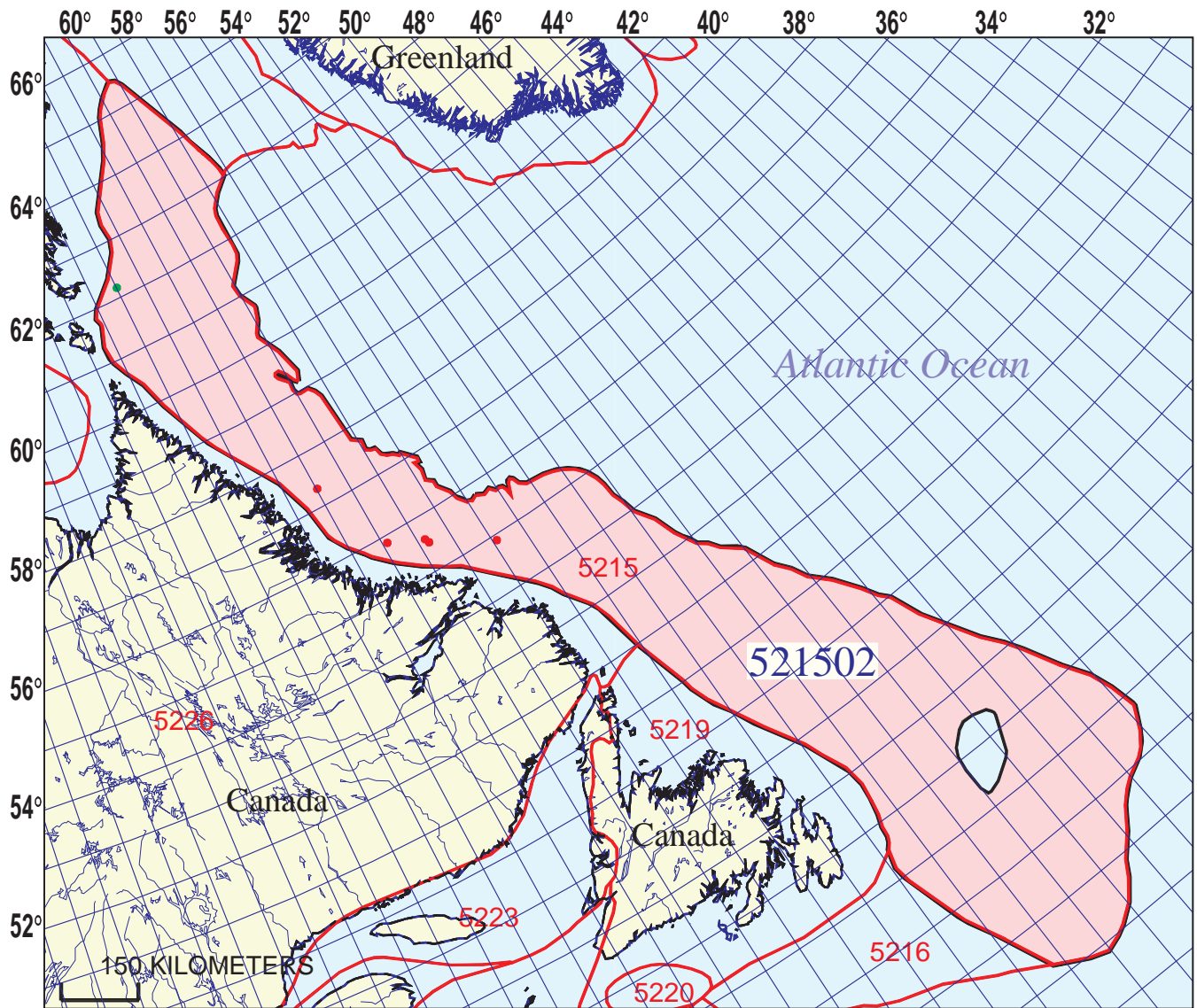
# Mesozoic Composite Total Petroleum System 521502



Graben Systems  
Exclusive of Jeanne d'Arc  
Assessment Unit 52150201

Graben Systems Exclusive of Jeanne d'Arc Assessment Unit 52150201

Labrador-Newfoundland Shelf Geologic Province 5215



## Mesozoic Composite Total Petroleum System - 521502

### EXPLANATION

- Hydrography
- Shoreline
- 5215 Geologic province code and boundary
- - - Country boundary
- Gas field centerpoint
- Oil field centerpoint
- 521502 — Total Petroleum System code and boundary

Projection: Lambert. Standard parallels: 49 and 77. Central meridian: -92