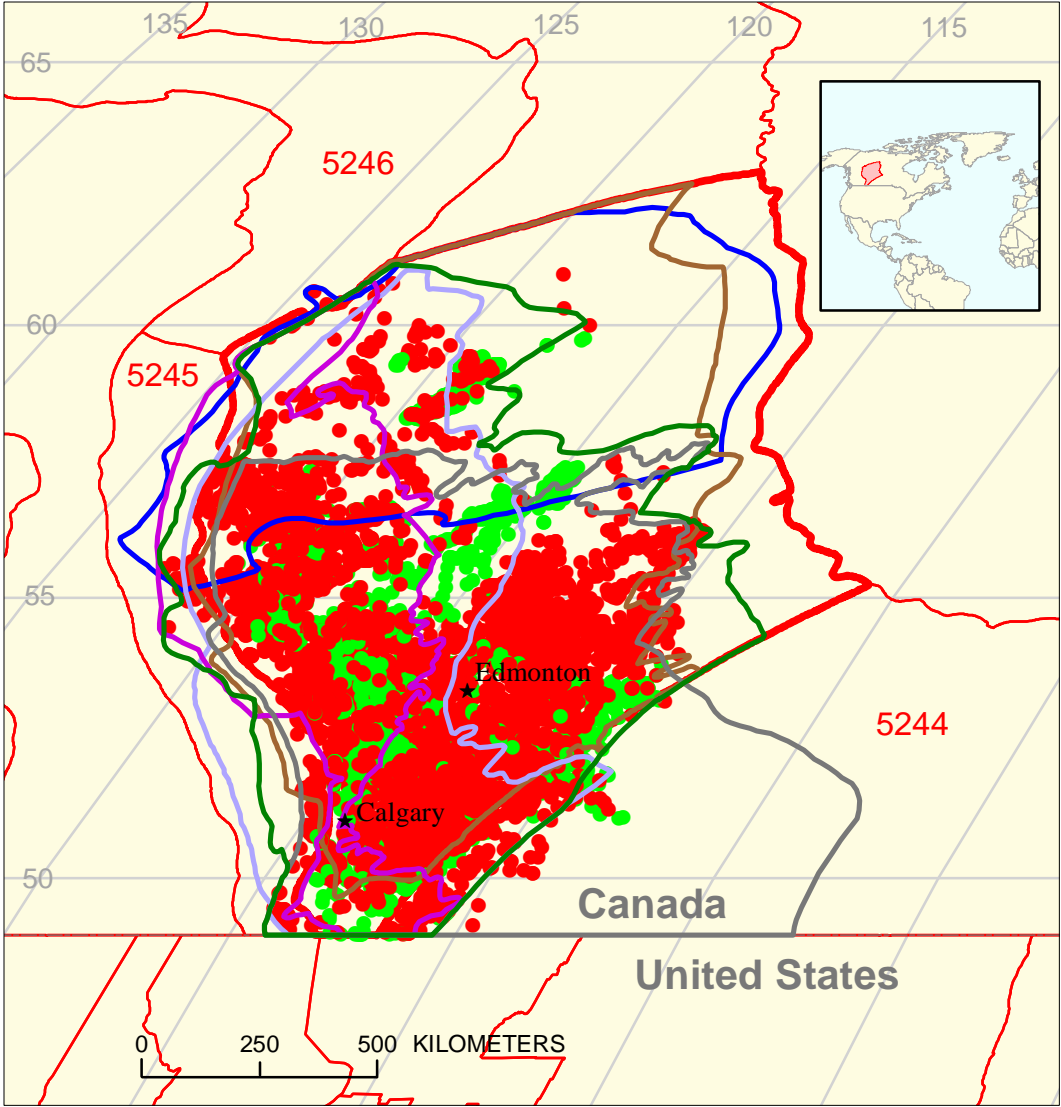


Alberta Basin Geologic Province 5243



- Keg River-Keg River
Total Petroleum System 524301
- Duvernay-Leduc
Total Petroleum System 524302
- Exshaw-Rundle
Total Petroleum System 524303
- Combined Triassic/Jurassic
Total Petroleum System 524304
- Mannville-Upper Manville
Total Petroleum System 524305
- Second White Specks-Cardium
Total Petroleum System 524306

- Keg River-Keg River Total Petroleum System 524301
- Duvernay-Leduc Total Petroleum System 524302
- Exshaw-Rundle Total Petroleum System 524303
- Combined Triassic/Jurassic Total Petroleum System 524304
- Mannville-Upper Manville Total Petroleum System 524305
- Second White Specks-Cardium Total Petroleum System 524306
- Alberta Basin Geologic Province 5243
- Other geologic province boundary

Alberta Basin, Province 5243
Assessment Results Summary - Allocated Resources

[MMBO, million barrels of oil. BCFG, billion cubic feet of gas. MMBNGL, million barrels of natural gas liquids. MFS, minimum field size assessed (MMBO or BCFG). Prob., probability (including both geologic and accessibility probabilities) of at least one field equal to or greater than the MFS. Results shown are fully risked estimates. For gas fields, all liquids are included under the NGL (natural gas liquids) category. F95 represents a 95 percent chance of at least the amount tabulated. Other fractiles are defined similarly. Fractiles are additive under the assumption of perfect positive correlation. Shading indicates not applicable]

Code and Field Type	MFS	Prob. (0-1)	Undiscovered Resources											
			Oil (MMBO)				Gas (BCFG)				NGL (MMBNGL)			
			F95	F50	F5	Mean	F95	F50	F5	Mean	F95	F50	F5	Mean

5243 Total: Assessed onshore portions of Alberta Basin Province

Oil Fields		1.00	324	785	1,416	818	250	644	1,265	686	14	38	81	41
Gas Fields							4,716	10,611	19,535	11,209	109	265	538	287
Total		1.00	324	785	1,416	818	4,966	11,255	20,801	11,895	123	303	619	328

5243 Total: Assessed offshore portions of Alberta Basin Province

Oil Fields		0.00	0	0	0	0	0	0	0	0	0	0	0	0
Gas Fields							0	0	0	0	0	0	0	0
Total		0.00	0	0	0	0	0	0	0	0	0	0	0	0

5243 Grand Total: Assessed portions of Alberta Basin Province

Oil Fields		1.00	324	785	1,416	818	250	644	1,265	686	14	38	81	41
Gas Fields							4,716	10,611	19,535	11,209	109	265	538	287
Total		1.00	324	785	1,416	818	4,966	11,255	20,801	11,895	123	303	619	328

Alberta Basin, Province 5243
Assessment Results Summary - Allocated Resources

[MMBO, million barrels of oil. BCFG, billion cubic feet of gas. MMBNGL, million barrels of natural gas liquids. MFS, minimum field size assessed (MMBO or BCFG). Prob., probability (including both geologic and accessibility probabilities) of at least one field equal to or greater than the MFS. Results shown are fully risked estimates. For gas fields, all liquids are included under the NGL (natural gas liquids) category. F95 represents a 95 percent chance of at least the amount tabulated. Other fractiles are defined similarly. Fractiles are additive under the assumption of perfect positive correlation. Shading indicates not applicable]

Code and Field Type	MFS	Prob. (0-1)	Undiscovered Resources											
			Oil (MMBO)				Gas (BCFG)				NGL (MMBNGL)			
			F95	F50	F5	Mean	F95	F50	F5	Mean	F95	F50	F5	Mean

524301 Keg River-Keg River Total Petroleum System

52430101 Keg River Gas Assessment Unit (0% of undiscovered oil fields and 80% of undiscovered gas fields allocated to ONSHORE province 5243)

Oil Fields	1	1.00	0	0	0	0	0	0	0	0	0	0	0	0
Gas Fields	3						282	655	1,223	695	5	13	26	14
Total		1.00	0	0	0	0	282	655	1,223	695	5	13	26	14

52430102 Keg River Oil and Gas Assessment Unit (98% of undiscovered oil fields and 95% of undiscovered gas fields allocated to ONSHORE province 5243)

Oil Fields	1	1.00	26	75	161	82	24	73	172	82	1	4	11	5
Gas Fields	3						293	751	1,376	783	5	15	30	16
Total		1.00	26	75	161	82	317	824	1,547	865	7	19	40	21

524302 Duvernay-Leduc Total Petroleum System

52430201 Leduc Gas Assessment Unit (0% of undiscovered oil fields and 80% of undiscovered gas fields allocated to ONSHORE province 5243)

Oil Fields	1	1.00	0	0	0	0	0	0	0	0	0	0	0	0
Gas Fields	3						763	1,879	3,363	1,954	27	69	137	74
Total		1.00	0	0	0	0	763	1,879	3,363	1,954	27	69	137	74

52430202 Leduc Oil and Gas Assessment Unit (99% of undiscovered oil fields and 99% of undiscovered gas fields allocated to ONSHORE province 5243)

Oil Fields	1	1.00	207	487	810	496	189	474	880	496	10	28	57	30
Gas Fields	3						129	263	475	278	4	10	19	11
Total		1.00	207	487	810	496	318	737	1,356	774	15	37	76	40

Alberta Basin, Province 5243
Assessment Results Summary - Allocated Resources

[MMBO, million barrels of oil. BCFG, billion cubic feet of gas. MMBNGL, million barrels of natural gas liquids. MFS, minimum field size assessed (MMBO or BCFG). Prob., probability (including both geologic and accessibility probabilities) of at least one field equal to or greater than the MFS. Results shown are fully risked estimates. For gas fields, all liquids are included under the NGL (natural gas liquids) category. F95 represents a 95 percent chance of at least the amount tabulated. Other fractiles are defined similarly. Fractiles are additive under the assumption of perfect positive correlation. Shading indicates not applicable]

Code and Field Type	MFS	Prob. (0-1)	Undiscovered Resources											
			Oil (MMBO)				Gas (BCFG)				NGL (MMBNGL)			
			F95	F50	F5	Mean	F95	F50	F5	Mean	F95	F50	F5	Mean
524303 Exshaw-Rundle Total Petroleum System														
52430301 Exshaw-Rundle Gas Assessment Unit (0% of undiscovered oil fields and 70% of undiscovered gas fields allocated to ONSHORE province 5243)														
Oil Fields	1	1.00	0	0	0	0	0	0	0	0	0	0	0	0
Gas Fields	3						485	1,409	2,997	1,538	9	27	64	31
Total			1.00	0	0	0	0	485	1,409	2,997	1,538	9	27	64
52430302 Exshaw-Rundle Oil and Gas Assessment Unit (93% of undiscovered oil fields and 99% of undiscovered gas fields allocated to ONSHORE province 5243)														
Oil Fields	1	1.00	45	108	218	117	18	47	104	53	1	3	7	3
Gas Fields	3						158	373	761	406	4	11	24	12
Total			1.00	45	108	218	117	176	420	865	458	5	14	31
524304 Combined Triassic/Jurassic Total Petroleum System														
52430401 Combined Triassic/Jurassic Gas Assessment Unit (0% of undiscovered oil fields and 25% of undiscovered gas fields allocated to ONSHORE province 5243)														
Oil Fields	1	1.00	0	0	0	0	0	0	0	0	0	0	0	0
Gas Fields	3						141	305	559	322	3	7	13	7
Total			1.00	0	0	0	0	141	305	559	322	3	7	13
52430402 Combined Triassic/Jurassic Oil and Gas Assessment Unit (92% of undiscovered oil fields and 92% of undiscovered gas fields allocated to ONSHORE province 5243)														
Oil Fields	1	1.00	33	81	169	89	14	36	81	40	1	2	5	2
Gas Fields	3						299	706	1,443	767	8	21	46	23
Total			1.00	33	81	169	89	312	742	1,524	807	9	23	51

Alberta Basin, Province 5243
Assessment Results Summary - Allocated Resources

[MMBO, million barrels of oil. BCFG, billion cubic feet of gas. MMBNGL, million barrels of natural gas liquids. MFS, minimum field size assessed (MMBO or BCFG). Prob., probability (including both geologic and accessibility probabilities) of at least one field equal to or greater than the MFS. Results shown are fully risked estimates. For gas fields, all liquids are included under the NGL (natural gas liquids) category. F95 represents a 95 percent chance of at least the amount tabulated. Other fractiles are defined similarly. Fractiles are additive under the assumption of perfect positive correlation. Shading indicates not applicable]

Code and Field Type	MFS	Prob. (0-1)	Undiscovered Resources											
			Oil (MMBO)				Gas (BCFG)				NGL (MMBNGL)			
			F95	F50	F5	Mean	F95	F50	F5	Mean	F95	F50	F5	Mean

524305 Mannville-Upper Mannville Total Petroleum System

52430501 Mannville Gas Assessment Unit (0% of undiscovered oil fields and 75% of undiscovered gas fields allocated to ONSHORE province 5243)

Oil Fields	1	1.00	0	0	0	0	0	0	0	0	0	0	0	0
Gas Fields	3						1,723	3,301	5,604	3,447	31	65	121	69
Total			1.00	0	0	0	0	1,723	3,301	5,604	3,447	31	65	121

524306 Second White Specks-Cardium Total Petroleum System

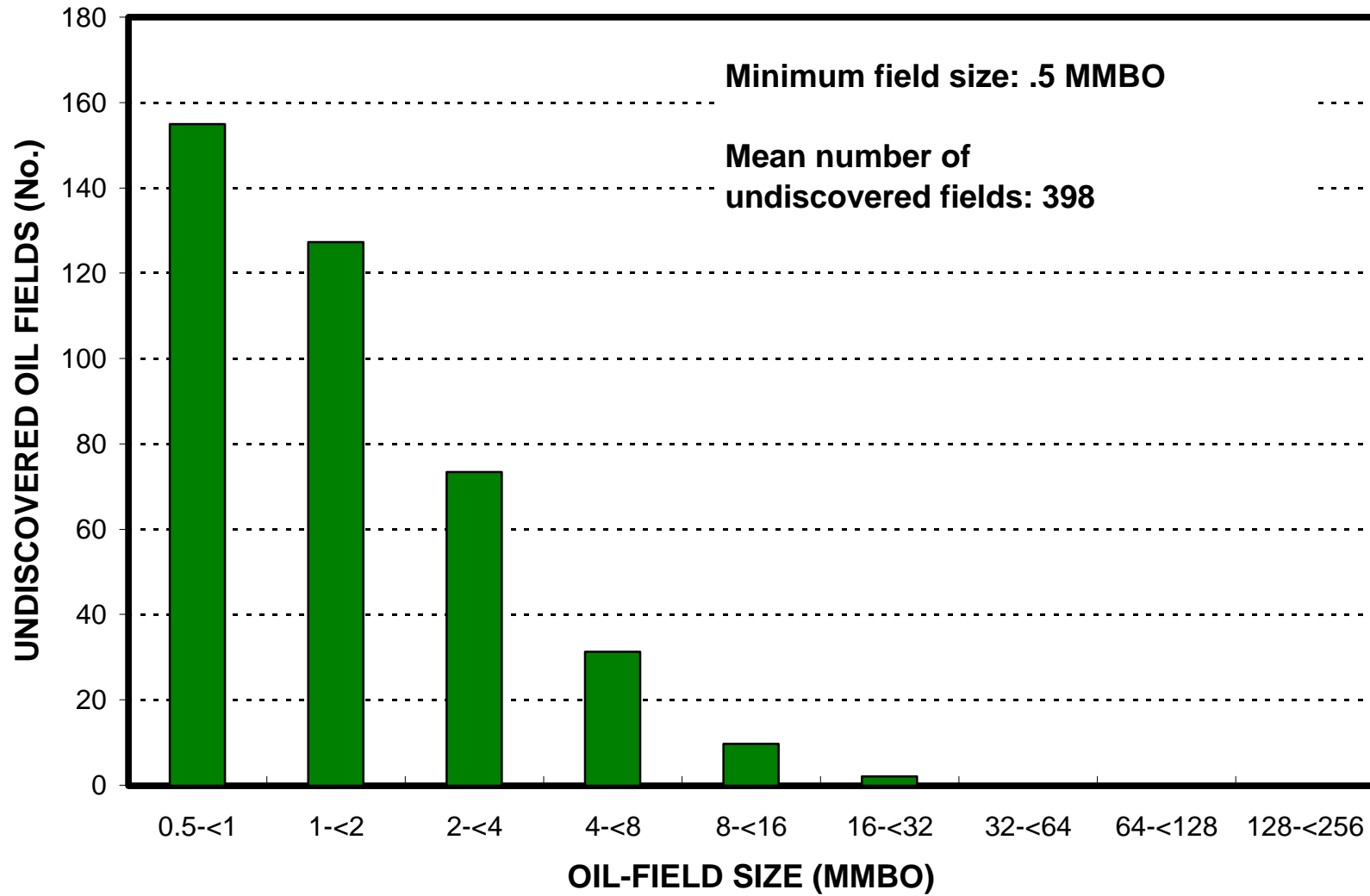
52430601 Second White Specks-Cardium Gas Assessment Unit (0% of undiscovered oil fields and 80% of undiscovered gas fields allocated to ONSHORE province 5243)

Oil Fields	1	1.00	0	0	0	0	0	0	0	0	0	0	0	0
Gas Fields	3						94	214	405	228	3	6	13	7
Total			1.00	0	0	0	0	94	214	405	228	3	6	13

52430602 Second White Specks-Cardium Oil and Gas Assessment Unit (96% of undiscovered oil fields and 96% of undiscovered gas fields allocated to ONSHORE province 5243)

Oil Fields	1	1.00	14	33	59	34	6	14	29	15	0	1	2	1
Gas Fields	3						350	755	1,330	791	10	22	43	24
Total			1.00	14	33	59	34	356	770	1,358	807	10	23	45

Alberta Basin, Province 5243 Undiscovered Field-Size Distribution



Alberta Basin, Province 5243 Undiscovered Field-Size Distribution

