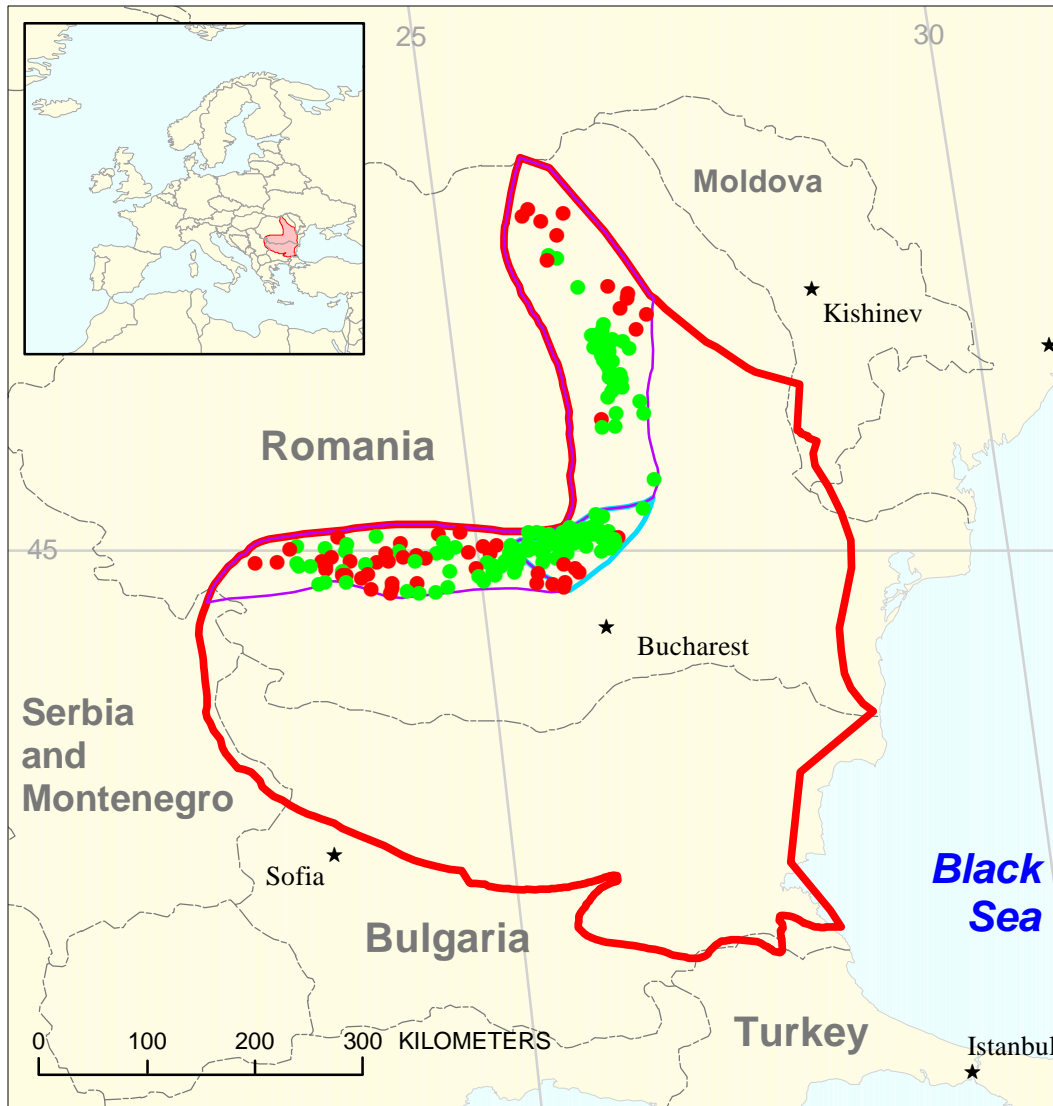
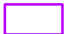




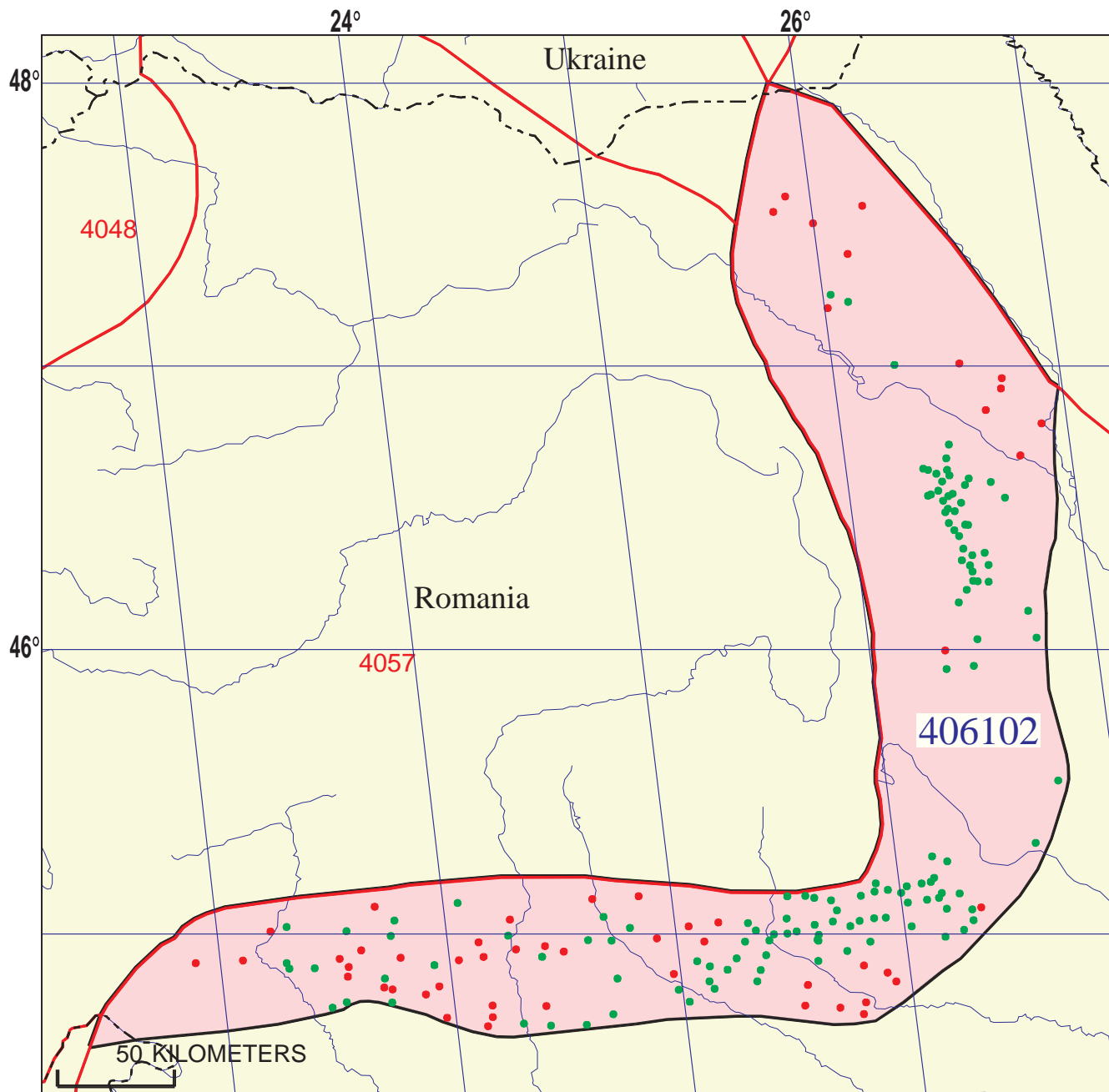


# Dysodile Schist-Tertiary Total Petroleum System 406102



-  Romania Flysch Zone  
Assessment Unit 40610201
-  Romania Ploiesti Zone  
Assessment Unit 40610202

-  Romania Flysch Zone Assessment Unit 40610201
-  Romania Ploiesti Zone 40610202
-  Carpathian-Balkanian Basin Geologic Province 4061



## Dysodile Schist-Tertiary Total Petroleum System - 406102

### EXPLANATION

- Hydrography
- Shoreline
- 4061 Geologic province code and boundary
- - - Country boundary
- Gas field centerpoint
- Oil field centerpoint
- 406102 — Total Petroleum System code and boundary

Projection: Robinson. Central meridian: 0

**Dysodile Schist-Tertiary, Total Petroleum System 406102**  
**Assessment Results Summary**

[MMBO, million barrels of oil. BCFG, billion cubic feet of gas. MMBNGL, million barrels of natural gas liquids. MFS, minimum field size assessed (MMBO or BCFG). Prob., probability (including both geologic and accessibility probabilities) of at least one field equal to or greater than the MFS. Results shown are fully risked estimates. For gas fields, all liquids are included under the NGL (natural gas liquids) category. F95 represents a 95 percent chance of at least the amount tabulated. Other fractiles are defined similarly. Fractiles are additive under the assumption of perfect positive correlation. Shading indicates not applicable]

Code and Field Type	MFS	Prob. (0-1)	Undiscovered Resources											
			Oil (MMBO)				Gas (BCFG)				NGL (MMBNGL)			
			F95	F50	F5	Mean	F95	F50	F5	Mean	F95	F50	F5	Mean
<b>40610201 Romania Flysch Zone Assessment Unit</b>														
Oil Fields	1	1.00	230	529	1,001	564	208	518	1,076	565	6	15	34	17
Gas Fields	6						391	1,454	3,352	1,612	15	56	142	64
Total		1.00	230	529	1,001	564	599	1,973	4,428	2,177	20	71	176	81
<b>40610202 Romania Ploiesti Zone Assessment Unit</b>														
Oil Fields	1	1.00	57	240	626	278	63	280	779	333	2	8	24	10
Gas Fields	6						41	101	199	108	2	4	8	4
Total		1.00	57	240	626	278	105	381	979	441	3	12	33	14
<b>406102 Total: Dysodile Schist-Tertiary Total Petroleum System</b>														
Oil Fields		1.00	286	769	1,627	842	272	799	1,855	898	8	23	59	27
Gas Fields							432	1,555	3,551	1,720	16	60	150	69
Total		1.00	286	769	1,627	842	704	2,354	5,406	2,618	24	84	209	96