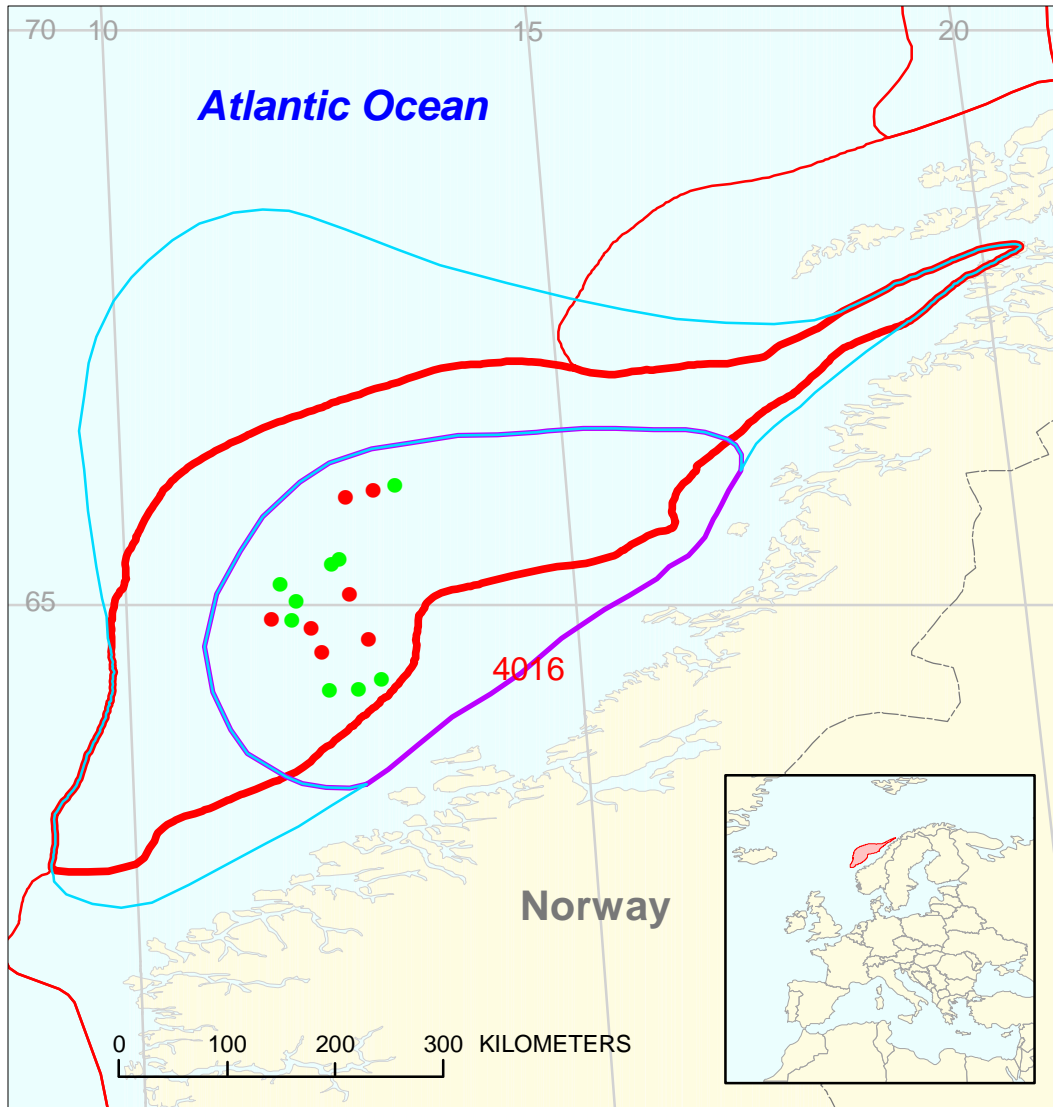






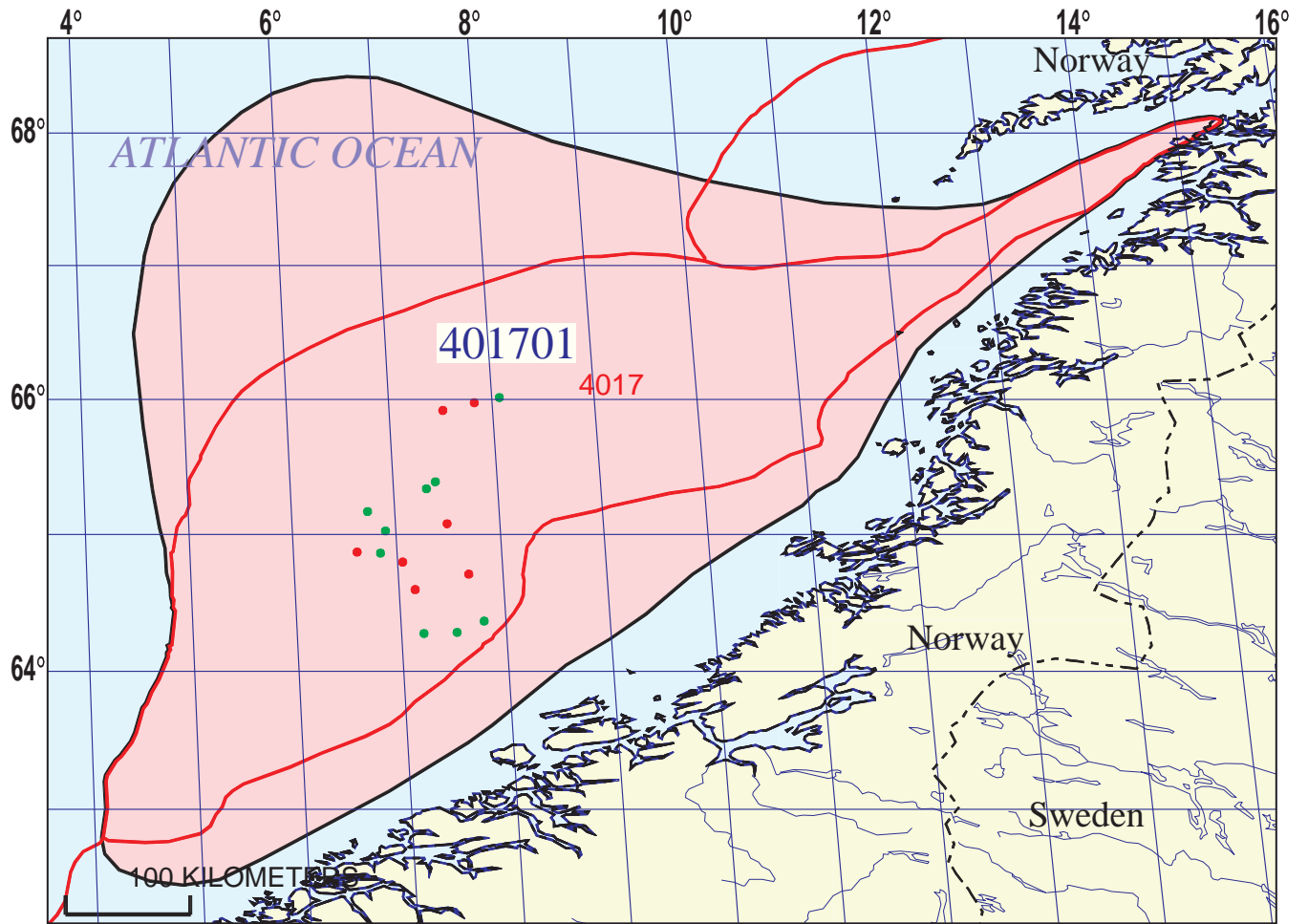


Upper Jurassic Spekk Total Petroleum System 401701



-  Halten Terrace-Trondelag Platform Assessment Unit 40170101
-  Mid-Norway Continental Margin Assessment Unit 40170102

-  Halten Terrace-Trondelag Platform Assessment Unit 40170101
-  Mid-Norway Continental Margin Assessment Unit 40170102
-  Vestford-Helgeland Geologic Province 4017
-  Other geologic province boundary



Upper Jurassic Spekk Total Petroleum System - 401701

EXPLANATION

- Hydrography
- Shoreline
- 4017 — Geologic province code and boundary
- Country boundary
- Gas field centerpoint
- Oil field centerpoint
- 401701 — Total Petroleum System code and boundary

Projection: Robinson. Central meridian: 0

**Upper Jurassic Spekk, Total Petroleum System 401701
Assessment Results Summary**

[MMBO, million barrels of oil. BCFG, billion cubic feet of gas. MMBNGL, million barrels of natural gas liquids. MFS, minimum field size assessed (MMBO or BCFG). Prob., probability (including both geologic and accessibility probabilities) of at least one field equal to or greater than the MFS. Results shown are fully risked estimates. For gas fields, all liquids are included under the NGL (natural gas liquids) category. F95 represents a 95 percent chance of at least the amount tabulated. Other fractiles are defined similarly. Fractiles are additive under the assumption of perfect positive correlation. Shading indicates not applicable]

Code and Field Type	MFS	Prob. (0-1)	Undiscovered Resources											
			Oil (MMBO)				Gas (BCFG)				NGL (MMBNGL)			
			F95	F50	F5	Mean	F95	F50	F5	Mean	F95	F50	F5	Mean
40170101 Halten Terrace-Trondelag Platform Assessment Unit														
Oil Fields	10	1.00	1,349	5,557	13,135	6,204	3,772	16,124	41,853	18,630	284	1,259	3,512	1,491
Gas Fields	60						8,430	34,686	82,058	38,739	555	2,355	6,056	2,711
Total		1.00	1,349	5,557	13,135	6,204	12,202	50,810	123,911	57,369	838	3,614	9,568	4,202
40170102 Mid-Norway Continental Margin Assessment Unit														
Oil Fields	20	0.95	31	290	778	334	92	979	2,822	1,165	7	76	234	93
Gas Fields	120						1,400	88,552	268,760	106,667	61	3,776	12,291	4,695
Total		0.95	31	290	778	334	1,493	89,531	271,581	107,832	67	3,852	12,525	4,788
401701 Total: Upper Jurassic Spekk Total Petroleum System														
Oil Fields		1.00	1,380	5,848	13,914	6,538	3,864	17,103	44,675	19,796	290	1,336	3,746	1,585
Gas Fields							9,831	123,237	350,818	145,406	616	6,131	18,347	7,406
Total		1.00	1,380	5,848	13,914	6,538	13,695	140,341	395,493	165,201	906	7,467	22,093	8,990