




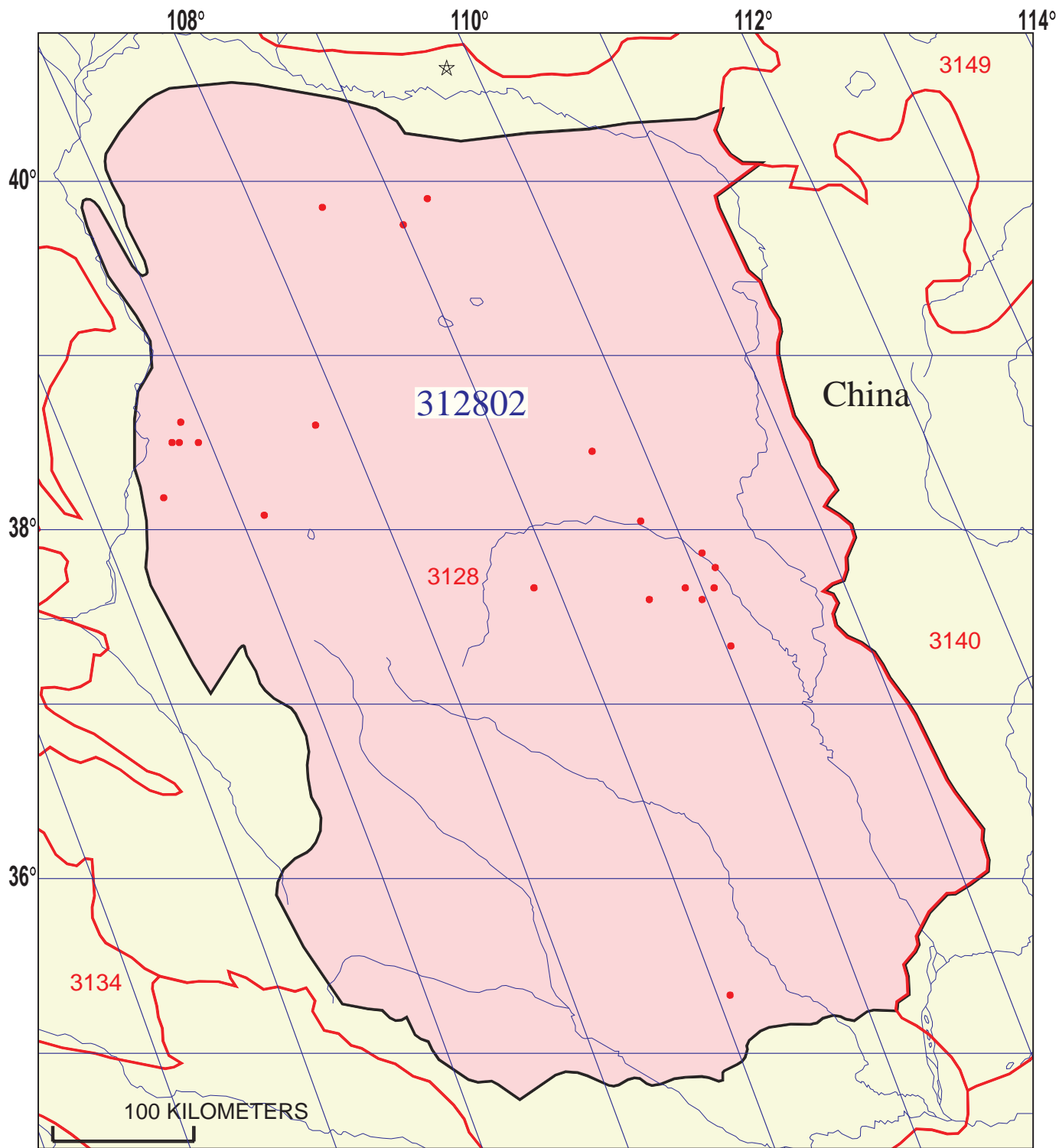


Taiyuan/Shanxi-Majiagou/Shihezi Total Petroleum System 312802



-  Basin Centered Gas (Continuous) in Ordovician Carbonate and Permian Sandstone Assessment Unit 31280201
-  Carboniferous and Permian Coalbed Methane (Continuous) Assessment Unit 31280202

-  Basin Centered Gas (Continuous) in Ordovician Carbonate and Permian Sandstone Assessment Unit 31280201
-  Carboniferous and Permian Coalbed Methane (Continuous) Assessment Unit 31280202
-  Ordos Basin Geologic Province 3128



Taiyuan/Shanxi-Majiagou/Shihezi Total Petroleum System - 312802

EXPLANATION

- Hydrography
- Shoreline
- 3128 Geologic province code and boundary
- Country boundary
- Gas field centerpoint
- Oil field centerpoint
- 312802 — Total Petroleum System code and boundary

Projection: Robinson. Central meridian: 0