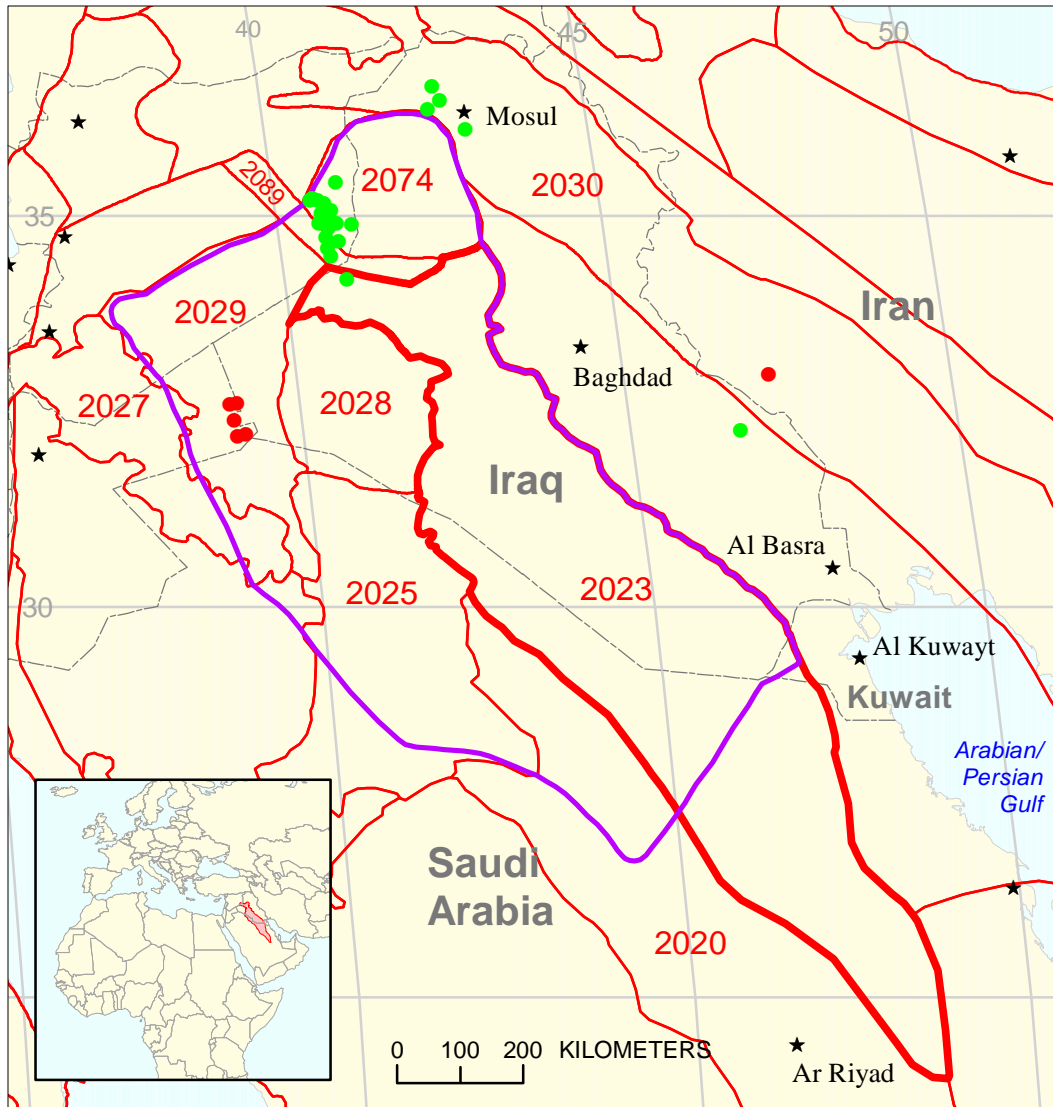



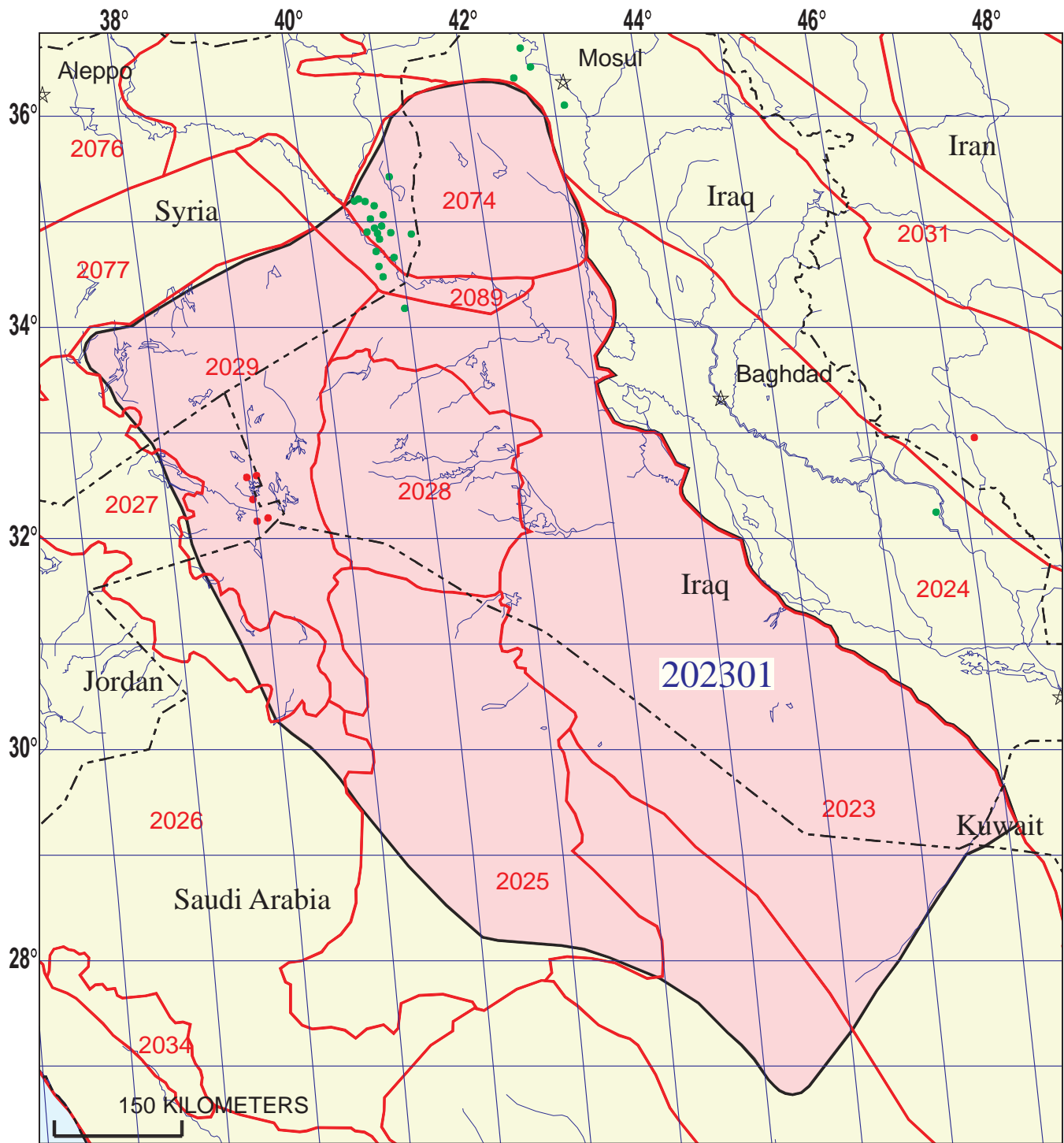


Paleozoic Qusaiba/Akkas/Abba/Mudawwara Total Petroleum System 202301



 Horst/Graben-Related Oil and Gas Assessment Unit 20230101

-  Horst/Graben-Related Oil and Gas Assessment Unit 20230101
-  Widyan Basin-Interior Platform Geologic Province 2023
-  Other geologic province boundary



Paleozoic Qusaiba/Akkas/Abba/Mudawwara Total Petroleum System - 202301

EXPLANATION

- Hydrography
- Shoreline
- 2023 Geologic province code and boundary
- - - Country boundary
- Gas field centerpoint
- Oil field centerpoint
- 202301 — Total Petroleum System code and boundary

Projection: Robinson. Central meridian: 0

**Paleozoic Qusaiba/Akkas/Abba/Mudawwara, Total Petroleum System 202301
Assessment Results Summary**

[MMBO, million barrels of oil. BCFG, billion cubic feet of gas. MMBNGL, million barrels of natural gas liquids. MFS, minimum field size assessed (MMBO or BCFG). Prob., probability (including both geologic and accessibility probabilities) of at least one field equal to or greater than the MFS. Results shown are fully risked estimates. For gas fields, all liquids are included under the NGL (natural gas liquids) category. F95 represents a 95 percent chance of at least the amount tabulated. Other fractiles are defined similarly. Fractiles are additive under the assumption of perfect positive correlation. Shading indicates not applicable]

Code and Field Type	MFS	Prob. (0-1)	Undiscovered Resources											
			Oil (MMBO)				Gas (BCFG)				NGL (MMBNGL)			
			F95	F50	F5	Mean	F95	F50	F5	Mean	F95	F50	F5	Mean

20230101 Horst/Graben-Related Oil and Gas Assessment Unit

Oil Fields	5	1.00	754	2,438	5,141	2,632	1,102	3,615	7,943	3,948	61	211	502	237
Gas Fields	30						19,888	58,628	106,688	60,562	1,566	4,656	8,690	4,843
Total		1.00	754	2,438	5,141	2,632	20,989	62,243	114,631	64,510	1,627	4,867	9,191	5,080

202301 Total: Paleozoic Qusaiba/Akkas/Abba/Mudawwara Total Petroleum System

Oil Fields		1.00	754	2,438	5,141	2,632	1,102	3,615	7,943	3,948	61	211	502	237
Gas Fields							19,888	58,628	106,688	60,562	1,566	4,656	8,690	4,843
Total		1.00	754	2,438	5,141	2,632	20,989	62,243	114,631	64,510	1,627	4,867	9,191	5,080