

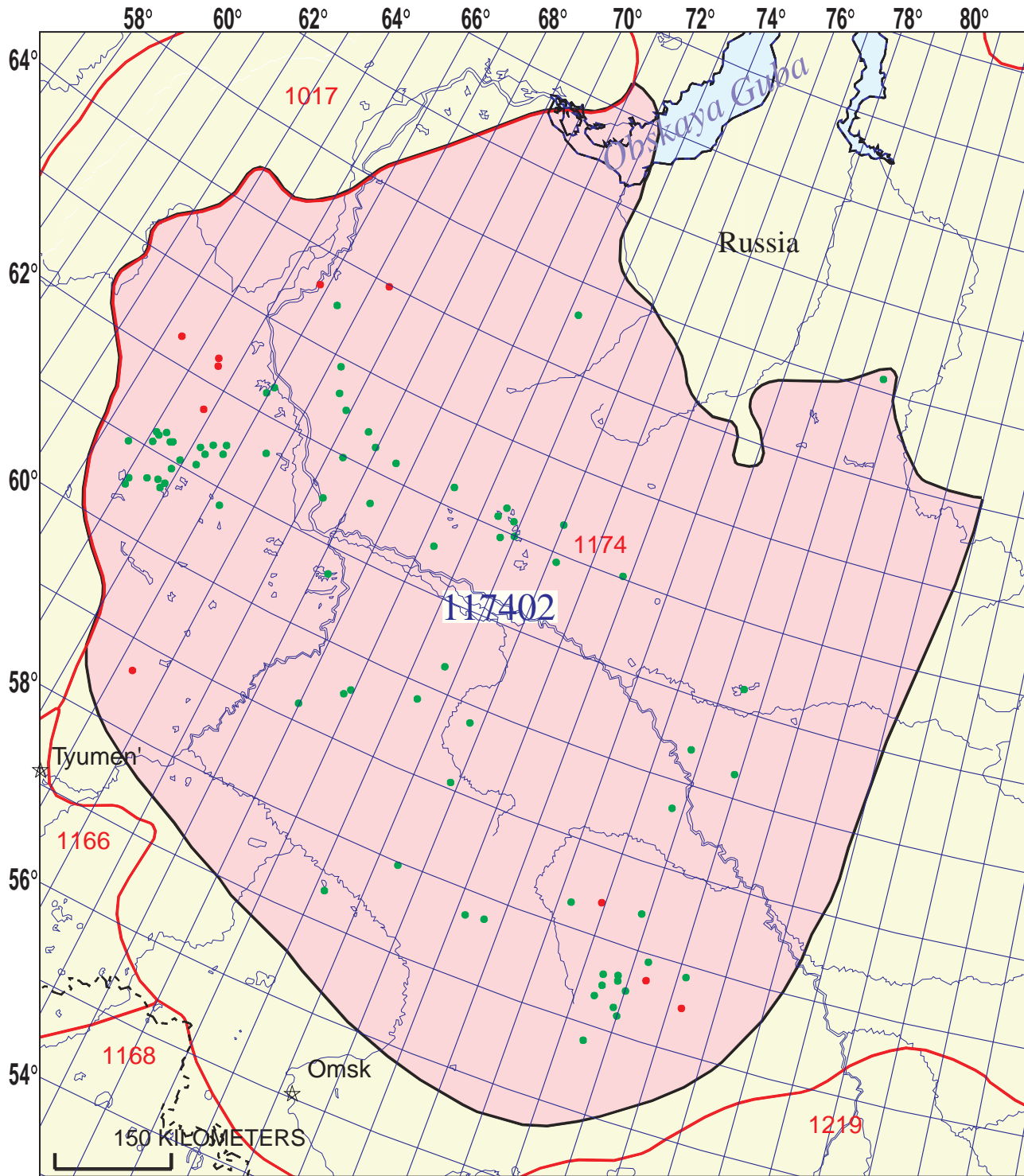


Togur-Tyumen Total Petroleum System 117402



 Pre-Upper Jurassic
Assessment Unit 11740201

-  Pre-Upper Jurassic Assessment Unit 11740201
-  West Siberian Basin Geologic Province 1174



Togur-Tyumen Total Petroleum System - 117402

EXPLANATION

- Hydrography
- Shoreline
- 1174 Geologic province code and boundary
- Country boundary
- Gas field centerpoint
- Oil field centerpoint
- 117402 — Total Petroleum System code and boundary

Projection: Equidistant Conic. Central meridian: 100. Standard Parallel: 58 30

Togur-Tyumen, Total Petroleum System 117402
Assessment Results Summary

[MMBO, million barrels of oil. BCFG, billion cubic feet of gas. MMBNGL, million barrels of natural gas liquids. MFS, minimum field size assessed (MMBO or BCFG). Prob., probability (including both geologic and accessibility probabilities) of at least one field equal to or greater than the MFS. Results shown are fully risked estimates. For gas fields, all liquids are included under the NGL (natural gas liquids) category. F95 represents a 95 percent chance of at least the amount tabulated. Other fractiles are defined similarly. Fractiles are additive under the assumption of perfect positive correlation. Shading indicates not applicable]

Code and Field Type	MFS	Prob. (0-1)	Undiscovered Resources											
			Oil (MMBO)				Gas (BCFG)				NGL (MMBNGL)			
			F95	F50	F5	Mean	F95	F50	F5	Mean	F95	F50	F5	Mean
11740201 Pre-Upper Jurassic Assessment Unit														
Oil Fields	5	1.00	2,325	6,828	14,724	7,474	1,286	4,043	9,821	4,597	71	236	613	276
Gas Fields	30						271	830	1,860	919	11	36	86	40
Total		1.00	2,325	6,828	14,724	7,474	1,558	4,873	11,681	5,516	82	272	700	316
117402 Total: Togur-Tyumen Total Petroleum System														
Oil Fields		1.00	2,325	6,828	14,724	7,474	1,286	4,043	9,821	4,597	71	236	613	276
Gas Fields							271	830	1,860	919	11	36	86	40
Total		1.00	2,325	6,828	14,724	7,474	1,558	4,873	11,681	5,516	82	272	700	316