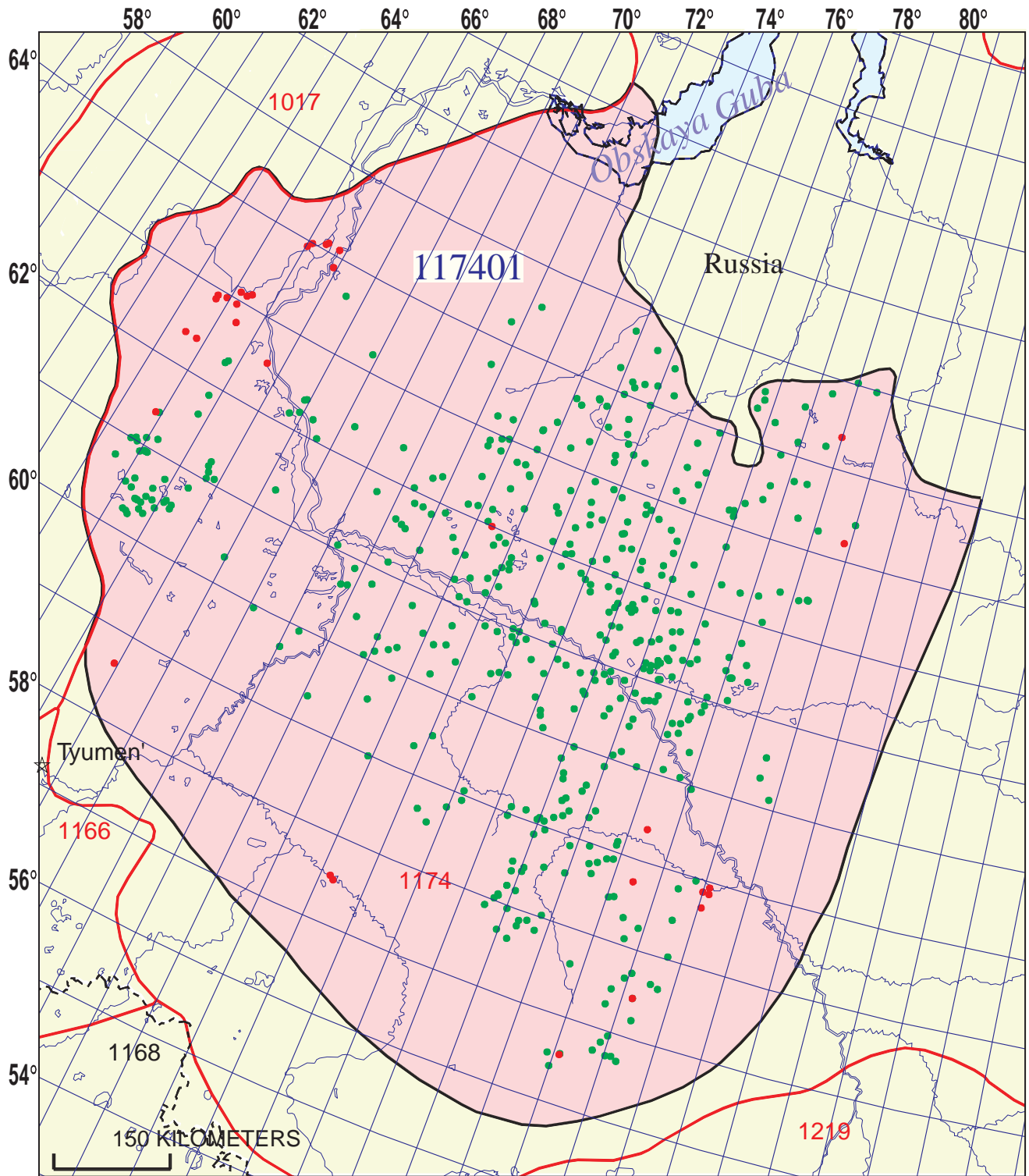


Bazhenov-Neocomian Total Petroleum System 117401



- Upper Jurassic-Cretaceous Sandstones Assessment Unit 11740101
- Self-Sourced Bazhenov Fractured Reservoirs Assessment Unit 11740102

- Upper Jurassic-Cretaceous Sandstones Assessment Unit 11740101
- Self-Sourced Bazhenov Fractured Reservoirs Assessment Unit 11740102
- West Siberian Basin Geologic Province 1174



Bazhenov-Neocomian Total Petroleum System - 117401

EXPLANATION

- Hydrography
- Shoreline
- 1174 Geologic province code and boundary
- - - Country boundary
- Gas field centerpoint
- Oil field centerpoint
- 117401 — Total Petroleum System code and boundary

Projection: Equidistant Conic. Central meridian: 100. Standard Parallel: 58 30

**Bazhenov-Neocomian, Total Petroleum System 117401
Assessment Results Summary**

[MMBO, million barrels of oil. BCFG, billion cubic feet of gas. MMBNGL, million barrels of natural gas liquids. MFS, minimum field size assessed (MMBO or BCFG). Prob., probability (including both geologic and accessibility probabilities) of at least one field equal to or greater than the MFS. Results shown are fully risked estimates. For gas fields, all liquids are included under the NGL (natural gas liquids) category. F95 represents a 95 percent chance of at least the amount tabulated. Other fractiles are defined similarly. Fractiles are additive under the assumption of perfect positive correlation. Shading indicates not applicable]

Code and Field Type	MFS	Prob. (0-1)	Undiscovered Resources											
			Oil (MMBO)				Gas (BCFG)				NGL (MMBNGL)			
			F95	F50	F5	Mean	F95	F50	F5	Mean	F95	F50	F5	Mean
11740101 Upper Jurassic-Cretaceous Sandstones Assessment Unit														
Oil Fields	5	1.00	13,761	39,987	81,363	42,947	28,026	85,490	190,829	94,430	1,552	4,979	12,082	5,662
Gas Fields	30						698	2,234	5,229	2,504	23	77	190	88
Total		1.00	13,761	39,987	81,363	42,947	28,724	87,724	196,057	96,934	1,575	5,055	12,272	5,749
117401 Total: Bazhenov-Neocomian Total Petroleum System														
Oil Fields		1.00	13,761	39,987	81,363	42,947	28,026	85,490	190,829	94,430	1,552	4,979	12,082	5,662
Gas Fields							698	2,234	5,229	2,504	23	77	190	88
Total		1.00	13,761	39,987	81,363	42,947	28,724	87,724	196,057	96,934	1,575	5,055	12,272	5,749