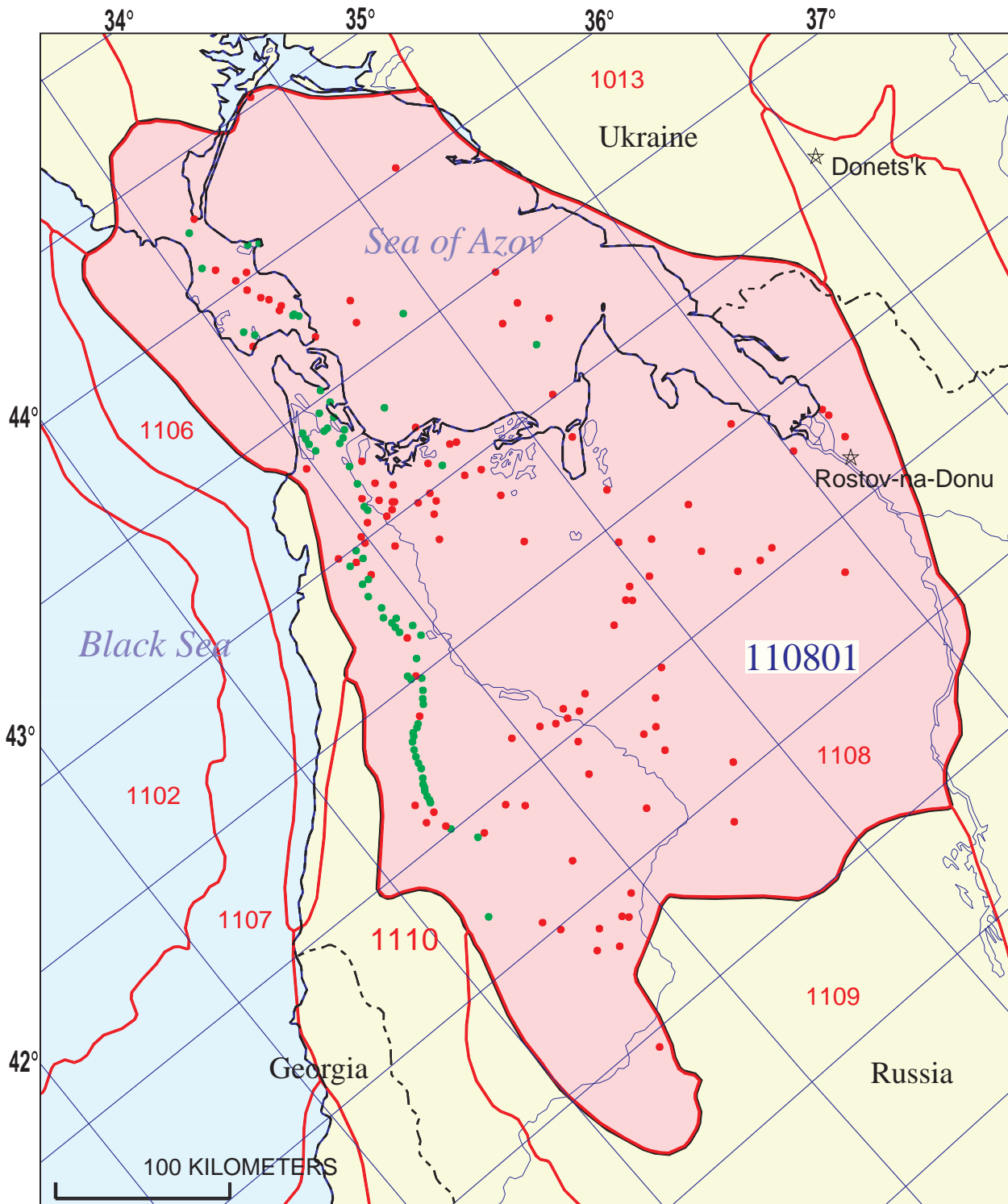


# Azov-Kuban Mesozoic-Cenozoic Total Petroleum System 110801



- Tertiary Foredeep  
Assessment Unit 11080101
- Foreland Slope  
Assessment Unit 11080102
- Subsalt Jurassic  
Assessment Unit 11080103

- Tertiary Foredeep Assessment Unit 11080101
- Foreland Slope Assessment Unit 11080102
- Subsalt Jurassic Assessment Unit 11080103
- Azov-Kuban Basin Geologic Province 1108



## Azov-Kuban Mesozoic-Cenozoic Total Petroleum System - 110801

### EXPLANATION

- Hydrography
- Shoreline
- 1108 Geologic province code and boundary
- - - Country boundary
- Gas field centerpoint
- Oil field centerpoint
- 110801 — Total Petroleum System code and boundary

Projection: Equidistant Conic. Central meridian: 100. Standard Parallel: 58 30

**Azov-Kuban Mesozoic-Cenozoic, Total Petroleum System 110801**  
**Assessment Results Summary**

[MMBO, million barrels of oil. BCFG, billion cubic feet of gas. MMBNGL, million barrels of natural gas liquids. MFS, minimum field size assessed (MMBO or BCFG). Prob., probability (including both geologic and accessibility probabilities) of at least one field equal to or greater than the MFS. Results shown are fully risked estimates. For gas fields, all liquids are included under the NGL (natural gas liquids) category. F95 represents a 95 percent chance of at least the amount tabulated. Other fractiles are defined similarly. Fractiles are additive under the assumption of perfect positive correlation. Shading indicates not applicable]

Code and Field Type	MFS	Prob. (0-1)	Undiscovered Resources											
			Oil (MMBO)				Gas (BCFG)				NGL (MMBNGL)			
			F95	F50	F5	Mean	F95	F50	F5	Mean	F95	F50	F5	Mean
<b>11080101 Tertiary Foredeep Assessment Unit</b>														
Oil Fields	2	1.00	89	266	512	280	108	381	1,027	450	6	22	64	27
Gas Fields	12						954	2,600	4,707	2,688	14	39	80	42
Total		1.00	89	266	512	280	1,061	2,981	5,733	3,139	20	61	143	69
<b>11080102 Foreland Slope Assessment Unit</b>														
Oil Fields	2	1.00	11	39	115	48	13	46	143	57	1	3	9	3
Gas Fields	12						2,729	6,501	11,980	6,837	24	64	148	72
Total		1.00	11	39	115	48	2,741	6,546	12,123	6,894	25	67	157	76
<b>11080103 Subsalt Jurassic Assessment Unit</b>														
Oil Fields	7	1.00	26	79	190	90	35	117	310	137	2	7	19	8
Gas Fields	42						627	1,902	4,134	2,082	17	56	131	63
Total		1.00	26	79	190	90	662	2,019	4,444	2,219	19	63	150	71
<b>110801 Total: Azov-Kuban Mesozoic-Cenozoic Total Petroleum System</b>														
Oil Fields		1.00	126	384	817	417	156	544	1,479	645	9	32	92	39
Gas Fields							4,309	11,003	20,821	11,606	55	159	358	177
Total		1.00	126	384	817	417	4,464	11,546	22,300	12,252	64	191	450	215