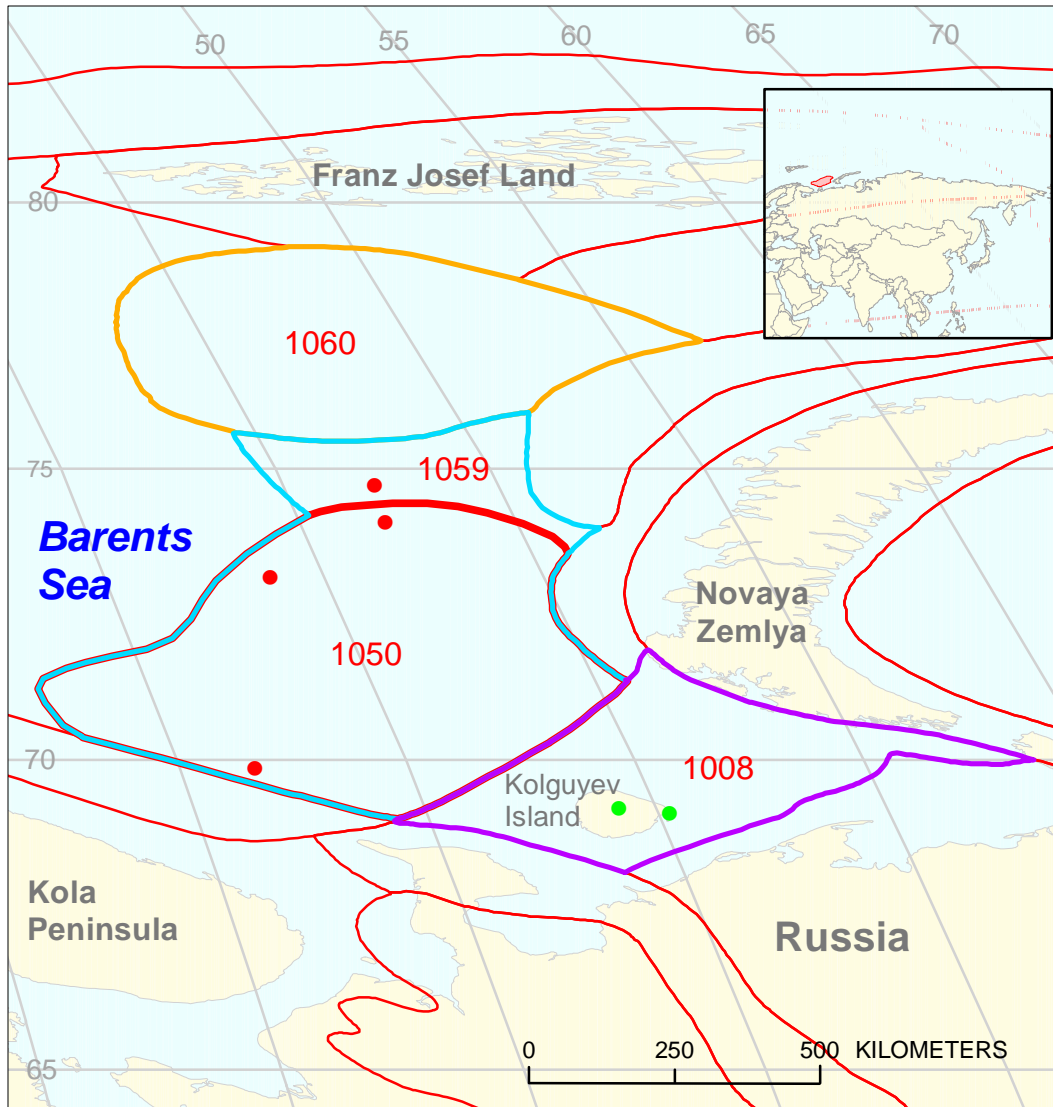








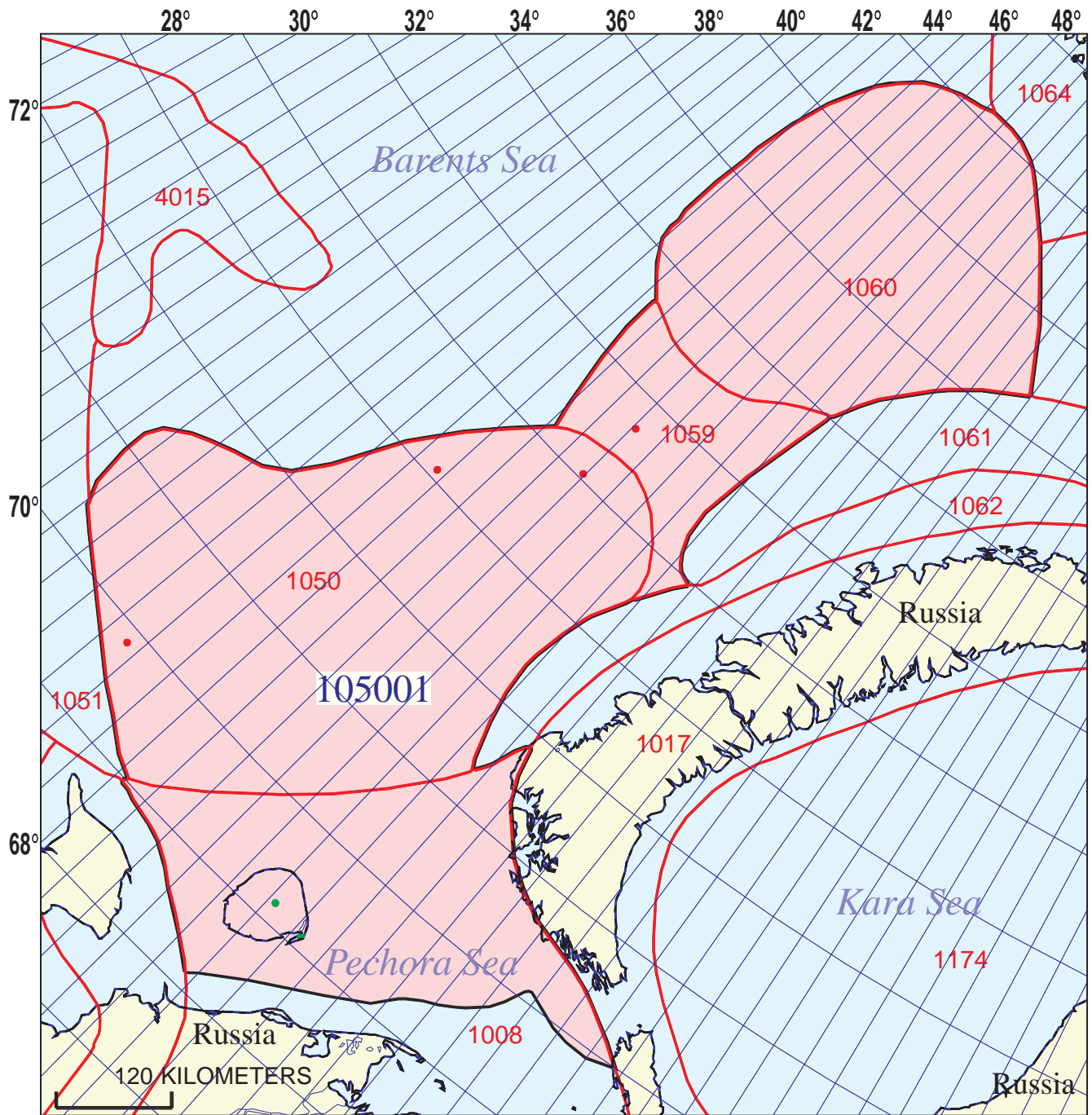


South and North Barents Triassic-Jurassic Total Petroleum System 105001



-  Kolguyev Terrace Assessment Unit 10500101
-  South Barents and Ludlov Saddle Assessment Unit 10500102
-  North Barents Assessment Unit 10500103

-  Kolguyev Terrace Assessment Unit 10500101
-  South Barents and Ludlov Saddle Assessment Unit 10500102
-  North Barents Assessment Unit 10500103
-  South Barents Basin Geologic Province 1050
-  Other geologic province boundary



South and North Barents Triassic-Jurassic Total Petroleum System - 105001

EXPLANATION

- Hydrography
- Shoreline
- 1050 Geologic province code and boundary
- Country boundary
- Gas field centerpoint
- Oil field centerpoint
- 105001 — Total Petroleum System code and boundary

Projection: Equidistant Conic. Central meridian: 100. Standard Parallel: 58 30

South and North Barents Triassic-Jurassic, Total Petroleum System 105001
Assessment Results Summary

[MMBO, million barrels of oil. BCFG, billion cubic feet of gas. MMBNGL, million barrels of natural gas liquids. MFS, minimum field size assessed (MMBO or BCFG). Prob., probability (including both geologic and accessibility probabilities) of at least one field equal to or greater than the MFS. Results shown are fully risked estimates. For gas fields, all liquids are included under the NGL (natural gas liquids) category. F95 represents a 95 percent chance of at least the amount tabulated. Other fractiles are defined similarly. Fractiles are additive under the assumption of perfect positive correlation. Shading indicates not applicable]

Code and Field Type	MFS	Prob. (0-1)	Undiscovered Resources											
			Oil (MMBO)				Gas (BCFG)				NGL (MMBNGL)			
			F95	F50	F5	Mean	F95	F50	F5	Mean	F95	F50	F5	Mean
10500101 Kolguyev Terrace Assessment Unit														
Oil Fields	10	1.00	121	500	1,216	563	290	1,226	3,128	1,406	16	71	197	84
Gas Fields	60						3,612	14,574	33,745	16,148	135	566	1,429	647
Total		1.00	121	500	1,216	563	3,902	15,799	36,873	17,554	151	637	1,626	731
10500102 South Barents and Ludlov Saddle Assessment Unit														
Oil Fields	20	1.00	61	217	592	257	147	534	1,519	644	8	31	94	39
Gas Fields	120						54,538	171,891	377,273	188,600	1,012	3,398	8,510	3,901
Total		1.00	61	217	592	257	54,686	172,425	378,792	189,244	1,020	3,429	8,604	3,940
10500103 North Barents Assessment Unit														
Oil Fields	20	0.95	21	121	287	135	44	300	739	338	2	18	46	20
Gas Fields	120						2,560	54,525	126,926	59,482	44	1,074	2,838	1,230
Total		0.95	21	121	287	135	2,604	54,825	127,665	59,820	46	1,092	2,884	1,250
105001 Total: South and North Barents Triassic-Jurassic Total Petroleum System														
Oil Fields		1.00	204	839	2,095	955	481	2,059	5,386	2,389	27	120	338	143
Gas Fields							60,710	240,990	537,944	264,230	1,191	5,037	12,777	5,778
Total		1.00	204	839	2,095	955	61,192	243,049	543,329	266,618	1,218	5,158	13,114	5,921