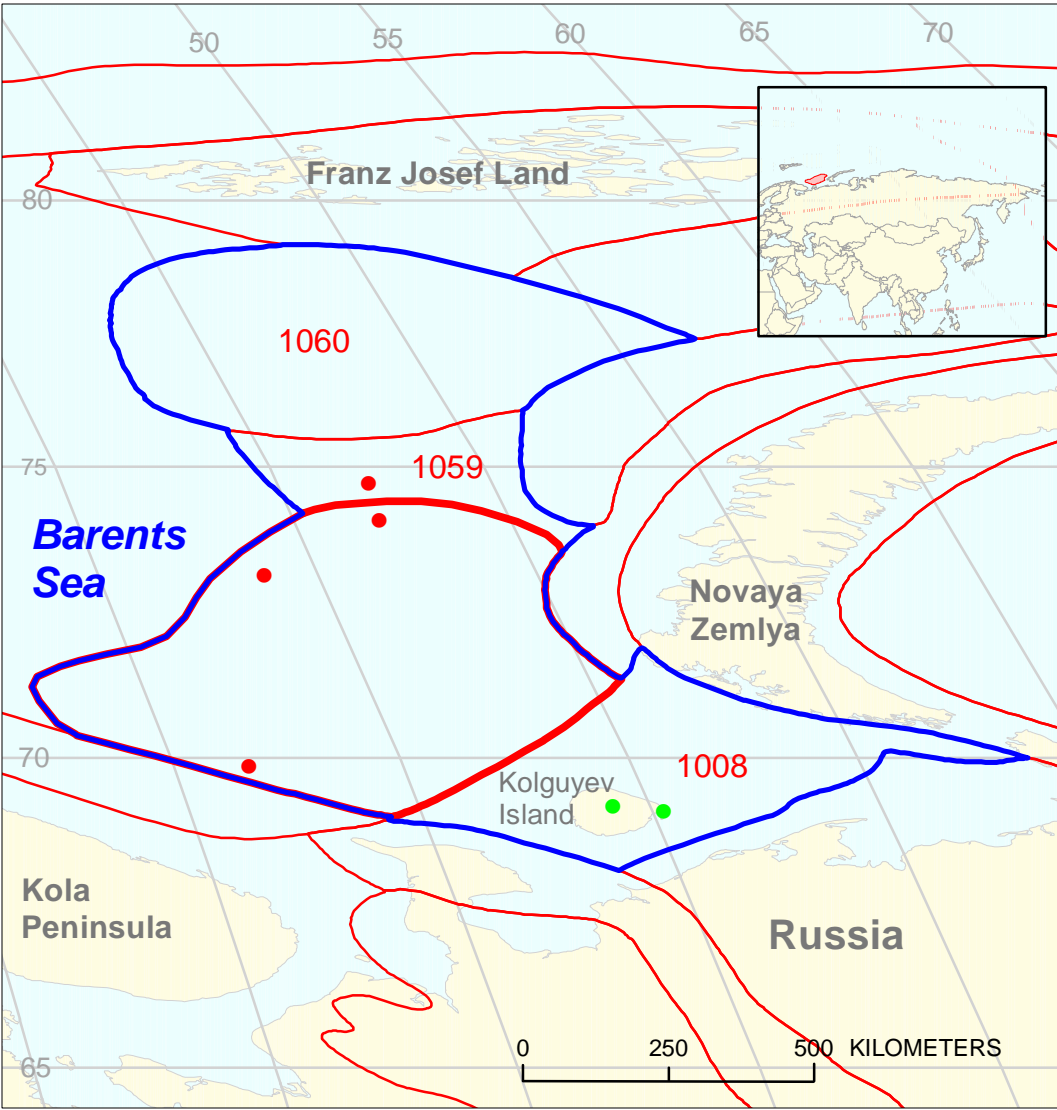


South Barents Basin Geologic Province 1050



□ South and North Barents
□ Triassic-Jurassic
 Total Petroleum System 105001

- South and North Barents Triassic-Jurassic Total Petroleum System 105001
- South Barents Basin Geologic Province 1050
- Other geologic province boundary

South Barents Basin, Province 1050
Assessment Results Summary - Allocated Resources

[MMBO, million barrels of oil. BCFG, billion cubic feet of gas. MMBNGL, million barrels of natural gas liquids. MFS, minimum field size assessed (MMBO or BCFG). Prob., probability (including both geologic and accessibility probabilities) of at least one field equal to or greater than the MFS. Results shown are fully risked estimates. For gas fields, all liquids are included under the NGL (natural gas liquids) category. F95 represents a 95 percent chance of at least the amount tabulated. Other fractiles are defined similarly. Fractiles are additive under the assumption of perfect positive correlation. Shading indicates not applicable]

Code and Field Type	MFS	Prob. (0-1)	Undiscovered Resources											
			Oil (MMBO)				Gas (BCFG)				NGL (MMBNGL)			
			F95	F50	F5	Mean	F95	F50	F5	Mean	F95	F50	F5	Mean

1050 Total: Assessed onshore portions of South Barents Basin Province

Oil Fields		0.00	0	0	0	0	0	0	0	0	0	0	0	0
Gas Fields						0	0	0	0	0	0	0	0	0
Total		0.00	0	0	0	0	0	0	0	0	0	0	0	0

1050 Total: Assessed offshore portions of South Barents Basin Province

Oil Fields		1.00	52	185	503	219	125	454	1,291	548	7	27	80	33
Gas Fields							46,358	146,107	320,682	160,310	860	2,888	7,233	3,316
Total		1.00	52	185	503	219	46,483	146,561	321,973	160,857	867	2,915	7,313	3,349

1050 Grand Total: Assessed portions of South Barents Basin Province

Oil Fields		1.00	52	185	503	219	125	454	1,291	548	7	27	80	33
Gas Fields							46,358	146,107	320,682	160,310	860	2,888	7,233	3,316
Total		1.00	52	185	503	219	46,483	146,561	321,973	160,857	867	2,915	7,313	3,349

South Barents Basin, Province 1050
Assessment Results Summary - Allocated Resources

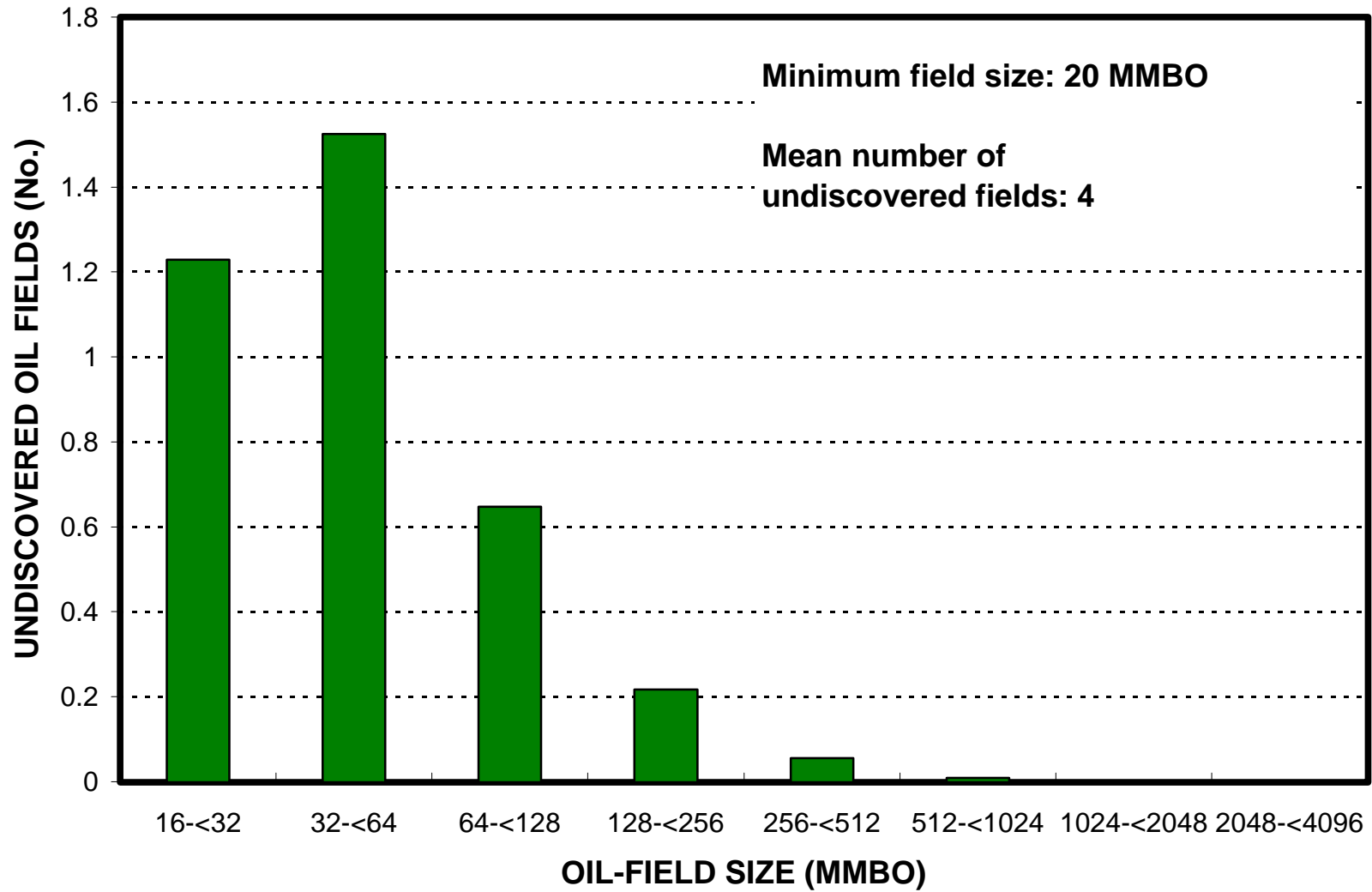
[MMBO, million barrels of oil. BCFG, billion cubic feet of gas. MMBNGL, million barrels of natural gas liquids. MFS, minimum field size assessed (MMBO or BCFG). Prob., probability (including both geologic and accessibility probabilities) of at least one field equal to or greater than the MFS. Results shown are fully risked estimates. For gas fields, all liquids are included under the NGL (natural gas liquids) category. F95 represents a 95 percent chance of at least the amount tabulated. Other fractiles are defined similarly. Fractiles are additive under the assumption of perfect positive correlation. Shading indicates not applicable]

Code and Field Type	MFS	Prob. (0-1)	Undiscovered Resources											
			Oil (MMBO)				Gas (BCFG)				NGL (MMBNGL)			
			F95	F50	F5	Mean	F95	F50	F5	Mean	F95	F50	F5	Mean

105001 South and North Barents Triassic-Jurassic Total Petroleum System

10500102	South Barents and Ludlov Saddle Assessment Unit (85% of undiscovered oil fields and 85% of undiscovered gas fields allocated to OFFSHORE province 1050)													
Oil Fields	20	1.00	52	185	503	219	125	454	1,291	548	7	27	80	33
Gas Fields	120						46,358	146,107	320,682	160,310	860	2,888	7,233	3,316
Total			1.00	52	185	503	219	46,483	146,561	321,973	160,857	867	2,915	7,313

South Barents Basin, Province 1050 Undiscovered Field-Size Distribution



South Barents Basin, Province 1050 Undiscovered Field-Size Distribution

